



# TOUCH YOUR DREAMS WITH ROBOT FINGERTIPS



## Robotphoenix LLC

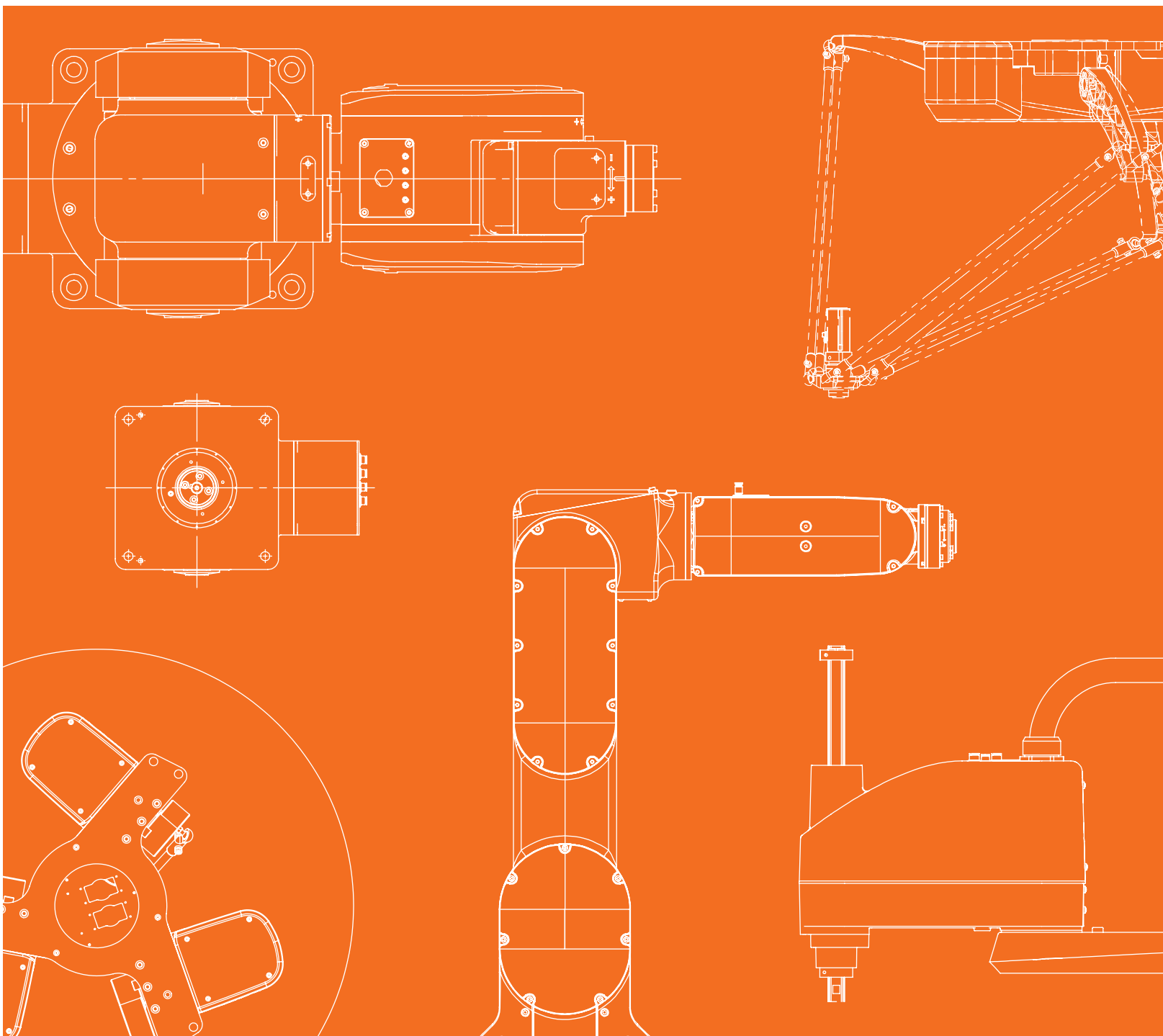
Jinan headquarters: Puyi Robot Industrial Park, Hangtian Avenue, High tech Development Zone, Jinan, Shandong Province, China.  
Shanghai subsidiary: Area C, 1st Floor, Building 1, No. 485 Xiangjiang Road, Nanxiang Town, Jiading District, Shanghai, China.  
Hangzhou subsidiary: Building 4, Phase II, Xiaoshan Robot Town, No. 477 Hongxing Road, Xiaoshan Economic Development Zone, Xiaoshan District, Hangzhou, China.  
Shenzhen subsidiary: Room 1201, Building 2, Manjinghua Science and Technology Workshop (Industrial Zone), No. 6, Songjiang Road, Songgang Sub-district, Bao'an District, Shenzhen, China.  
Suzhou subsidiary: Room 607, Building 1, Jinfeng Creative Business Center, No. 1066, Zhujiang South Road, Mudu Town, Wuzhong District, Suzhou, China.



TEL:+86 571 8264-9522



Email: [info@robotphoenix.com](mailto:info@robotphoenix.com)



Our dedication is solely for creating the ultimate.

# RobotPhoenix

## Selection Manual

ROBOTPHOENIX LLC



A brief overview of robot selection

Delta robot

Bat series standard 4-axis

Bat series standard 3-axis



Rated load (kg) | **1**  
Precision (mm) | ±0.05  
Working diameter (mm) | 360



Rated load (kg) | **3**  
Precision (mm) | ±0.05  
Working diameter (mm) | 800/1100



Rated load (kg) | **6**  
Precision (mm) | ±0.05  
Working diameter (mm) | 1300



Rated load (kg) | **6**  
Precision (mm) | ±0.05  
Working diameter (mm) | 1600



Rated load (kg) | **3**  
Precision (mm) | ±0.05  
Working diameter (mm) | 800/1100



Rated load (kg) | **6**  
Precision (mm) | ±0.05  
Working diameter (mm) | 1300



Rated load (kg) | **6**  
Precision (mm) | ±0.05  
Working diameter (mm) | 1600

Delta robot

Bat series - 4th axis under-mounted

Bat series 2+1 2-axis

Bat series standard 2-axis



Rated load (kg) | **0.5**  
Precision (mm) | ±0.05  
Working diameter (mm) | 250



Rated load (kg) | **0.5**  
Precision (mm) | ±0.05  
Working diameter (mm) | 360



Rated load (kg) | **3**  
Precision (mm) | ±0.05  
Working diameter (mm) | 1300



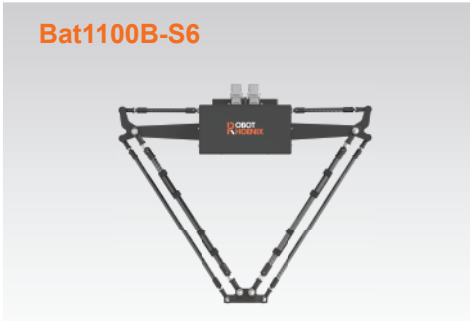
Rated load (kg) | **15**  
Precision (mm) | ±0.05  
Working diameter (mm) | 1600



Rated load (kg) | **15**  
Precision (mm) | ±0.05  
Working diameter (mm) | 1600



Rated load (kg) | **20**  
Precision (mm) | ±0.05  
Working diameter (mm) | 1300



Rated load (kg) | **6**  
Precision (mm) | ±0.05  
Working diameter (mm) | 1100

SCARA robot

B series

SCARA robot

T series



Max. load (kg) | **6**  
Arm length (mm) | 450/550/650



Max. load (kg) | **20**  
Arm length (mm) | 450/550/650



Max. load (kg) | **6**  
Arm length (mm) | 450/550/650



Max. load (kg) | **6**  
Arm length (mm) | 450/550/650



Max. load (kg) | **20**  
Arm length (mm) | 450/550/650



Max. load (kg) | **6**  
Arm length (mm) | 450/550/650



# Bat360-S1

**Applicable industries**

## Product features

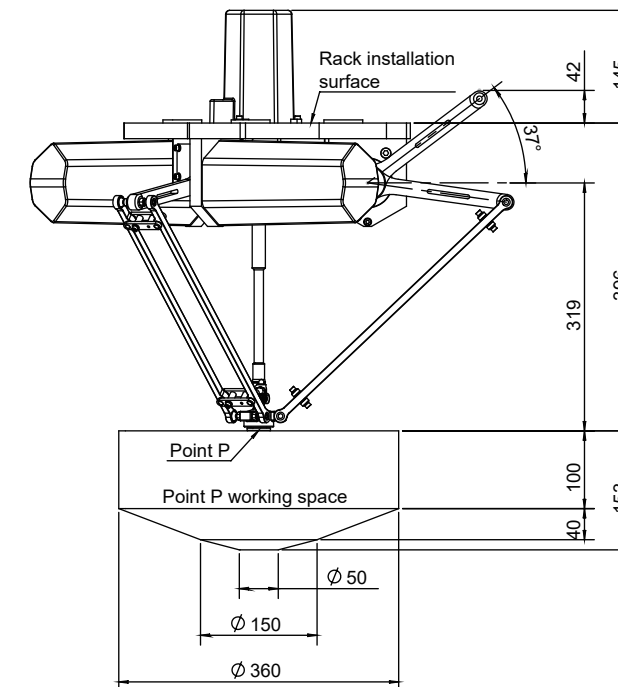
Load	1kg
Working space diameter	360mm
Repeat positioning accuracy	$\pm 0.05\text{mm}$
Configuration	Standard 4-axis



## Bat360-S1

Rated load		1kg
Working space diameter		360mm
Number of axes		4
Repeat positioning accuracy		±0.05mm
4-axis repeat positioning accuracy		±0.1°
20/100/20	0.1kg	0.19s
	0.5kg	0.19s
	1kg	0.19s
25/305/25	0.1kg	0.25s
	0.5kg	0.27s
	1kg	0.3s
Power supply voltage		Single-phase AC 220 V±10%, 50/60 Hz
Rated power		0.85KW
Ambient temperature		0-45℃
Relative humidity		5-95%
Degree of protection		IP54
Safety		Equipped with monitoring, emergency stop, and installation functions
Radiation		EMC shielding
Installation method		Suspended type
Weight of the robot body		25kg
I/O interface		12-channel universal digital I/O; 2-channel encoder input
Ethernet		2
USB		1
RS232\RS485		1
EtherCAT		1
Communication protocol		Modbus-RTU/TCP、Socket

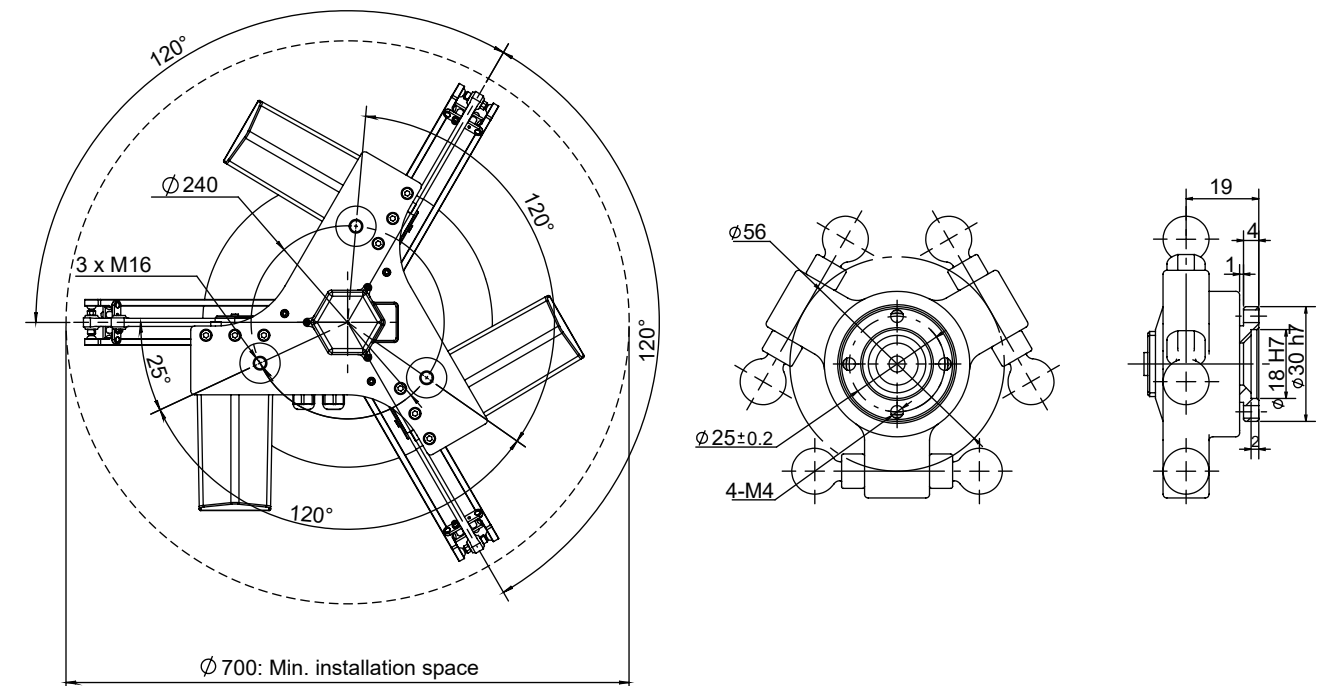
## Working range



## Bat360-S1

Distance from installation surface to top of equipment	145mm
Max. upper arm elevation and horizontal plane angle	37°
Max. elevation of the upper arm to the height of the installation surface	42mm
Distance from installation surface to upper plane of working space	396mm
Distance from the reducer shaft center to the upper plane of the working space	319mm
Total height of the upper and lower limits of the working space	153mm
Height of the cylindrical part of the working space	100mm
Height of the conical frustum part of the working space	40mm
Transition diameter of the conical column in the working space	150mm
Bottom diameter of the conical column in the working space	50mm
Diameter of the circular table part of the working space	360mm
Min. installation size of the robot body	700mm

## Installation size



\*: Any changes resulting from upgrading our products will not be notified separately.

Bat-series Delta Robot

Bat800-S3

It features high speed and agility, high positioning accuracy, and strong power, facilitating high-speed and high-precision flexible production.

Applicable industries  
Sorting, handling, loading and unloading, boxing, gluing, and other links in electronics, food, medicine, daily chemicals, logistics, and new energy.


Product features

Load	3kg
Working space diameter	800mm
Repeat positioning accuracy	±0.05mm
Configuration	Standard 4-axis



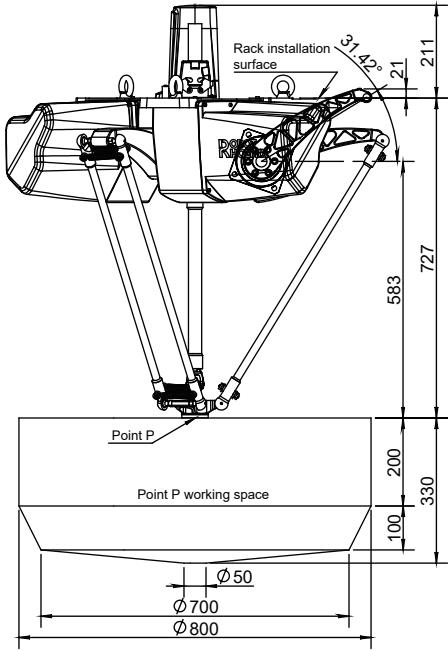
Specification

Specification

Bat800-S3		
Rated load		3kg
Max. load		12kg
Working space diameter		800mm
Number of axes		4
Repeat positioning accuracy		±0.05mm
4-axis repeat positioning accuracy		±0.1°
25/305/25	0.1kg	0.25s
	1kg	0.27s
	3kg	0.33s
90/400/90	0.1kg	0.34s
	1kg	0.37s
	3kg	0.4s
Power supply voltage		Three-phase AC 380 V±10%, 50/60 Hz
Rated power		3.4KW
Ambient temperature		0-45°C
Relative humidity		5-95%
Degree of protection		IP54
Safety		Equipped with monitoring, emergency stop, and installation functions
Radiation		EMC shielding
Installation method		Suspended type
Weight of the robot body		70kg
I/O interface		4-channel configurable digital I/O 8-channel universal digital I/O (8 additional I/O channels can be added) 2-channel encoder input
Ethernet		2
USB		2
RS232\RS485		1
EtherCAT		1
Communication protocol		Modbus-RTU/TCP、Socket
Certification		 MTBF

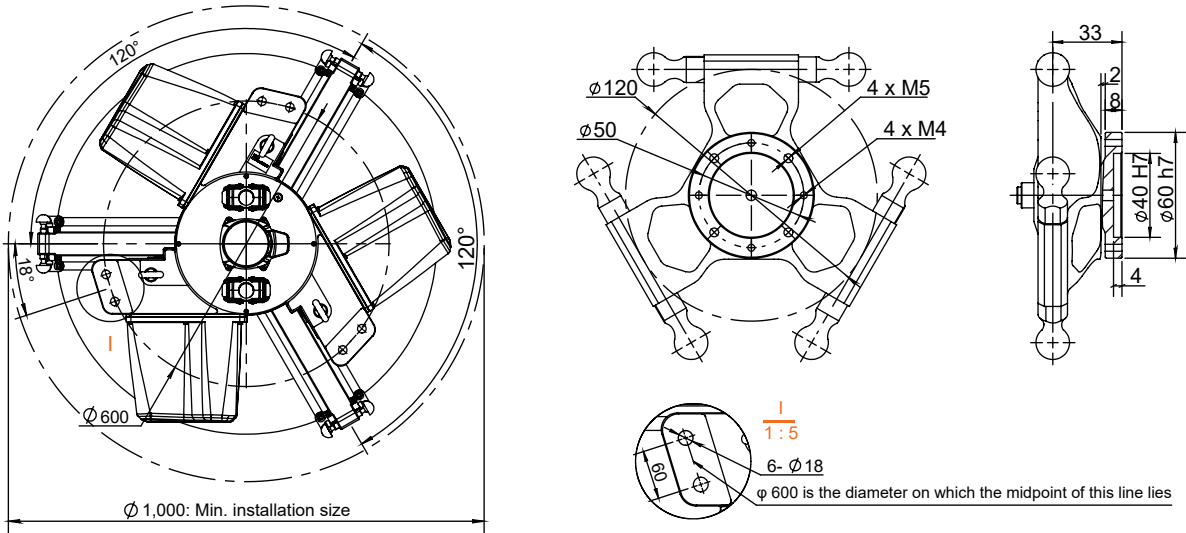
\*: For specific requirements regarding line selection, interface configuration, and other optional needs, please consult the technicians of RobotPhoenix.

Working range

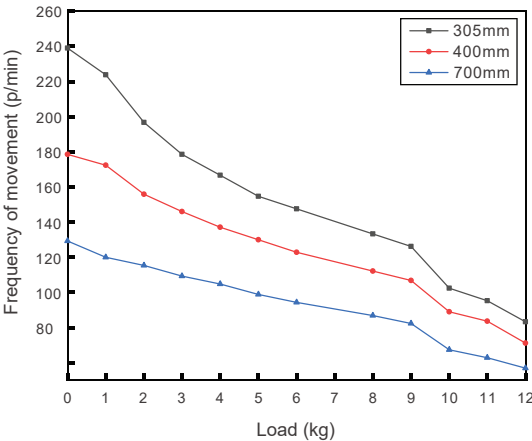


Model	Bat800-S3
Distance from installation surface to top of equipment	211mm
Max. upper arm elevation and horizontal plane angle	31.42°
Max. elevation of the upper arm to the height of the installation surface	21mm
Distance from installation surface to upper plane of working space	727mm
Distance from the reducer shaft center to the upper plane of the working space	583mm
Total height of the upper and lower limits of the working space	330mm
Height of the cylindrical part of the working space	200mm
Height of the conical frustum part of the working space	100mm
Transition diameter of the conical column in the working space	700mm
Bottom diameter of the conical column in the working space	50mm
Diameter of the circular table part of the working space	800mm
Min. installation size of the robot body	1000mm

Installation size (unit: mm)



Load - Frequency



Moving trajectory							
Cyclic mode	P1 → P2 → P3 → P4 → P3 → P2 → P1						
h (mm )	25	90	125	150	200	250	300
b (mm )	305	400	550	700	900	1200	1500

\*: Any changes resulting from upgrading our products will not be notified separately.



Bat-series Delta Robot

Bat1100-S3

It features high speed and agility, high positioning accuracy, and strong power, facilitating high-speed and high-precision flexible production.

Applicable industries  
Sorting, handling, loading and unloading, boxing, gluing, and other links in electronics, food, medicine, daily chemicals, logistics, and new energy.

Product features

Rated load	3kg
Working space diameter	1100mm
Repeat positioning accuracy	±0.05mm
Configuration	Standard 4-axis



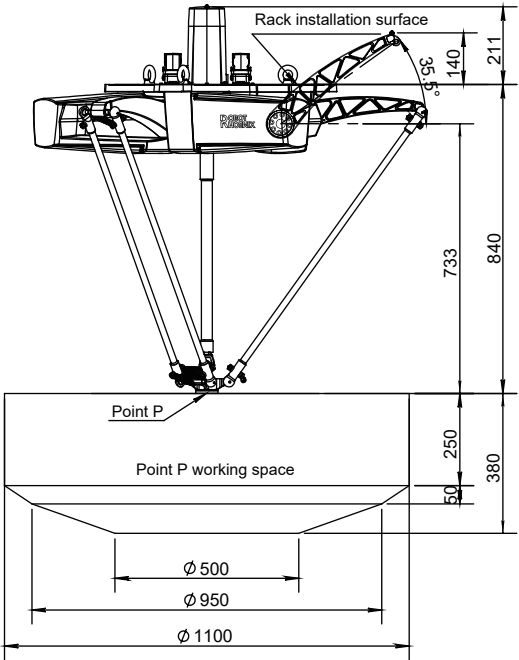
Specification

Bat1100-S3

Rated load			3kg
Max. load			12kg
Working space diameter			1100mm
Number of axes			4
Repeat positioning accuracy			±0.05mm
4-axis repeat positioning accuracy			±0.1°
25/305/25	0.1kg		0.23s
	1kg		0.25s
	3kg		0.30s
90/400/90	0.1kg		0.31s
	1kg		0.34s
	3kg		0.39s
Power supply voltage			Three-phase AC 380 V±10%, 50/60 Hz
Rated power			3.4KW
Ambient temperature			0-45°C
Relative humidity			5-95%
Degree of protection			IP54
Safety			Equipped with monitoring, emergency stop, and installation functions
Radiation			EMC shielding
Installation method			Suspended type
Weight of the robot body			60kg
I/O interface			4-channel configurable digital I/O 8-channel universal digital I/O (8 additional I/O channels can be added) 2-channel encoder input
Ethernet			2
USB			2
RS232\RS485			1
EtherCAT			1
Communication protocol			Modbus-RTU/TCP、Socket
Certification			CE

\*: For specific requirements regarding line selection, interface configuration, and other optional needs, please consult the technicians of RobotPhoenix.

Working range

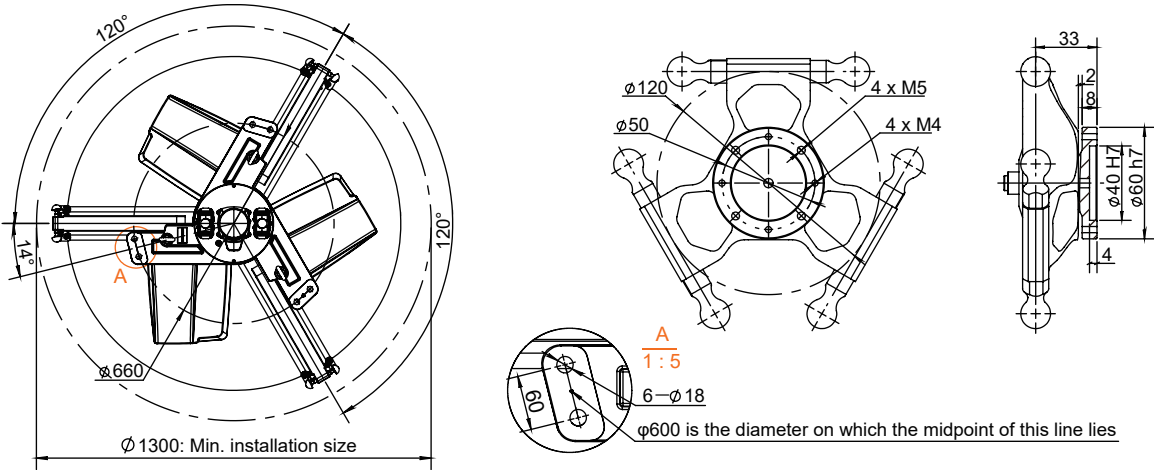


Model

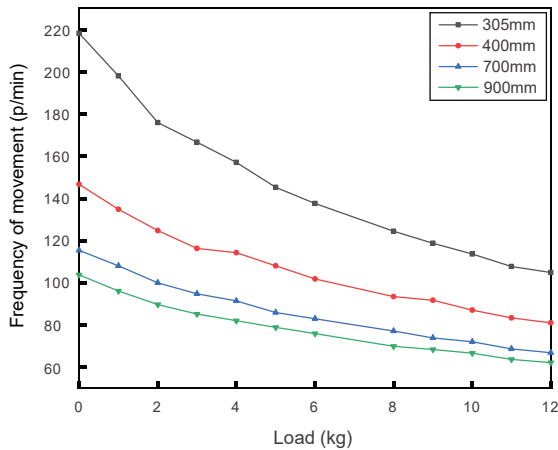
Bat1100-S3

Distance from installation surface to top of equipment	211mm
Max. upper arm elevation and horizontal plane angle	35.5°
Max. elevation of the upper arm to the height of the installation surface	140mm
Distance from installation surface to upper plane of working space	840mm
Distance from the reducer shaft center to the upper plane of the working space	733mm
Total height of the upper and lower limits of the working space	380mm
Height of the cylindrical part of the working space	250mm
Height of the conical frustum part of the working space	50mm
Transition diameter of the conical column in the working space	950mm
Bottom diameter of the conical column in the working space	500mm
Diameter of the circular table part of the working space	1100mm
Min. installation size of the robot body	1300mm

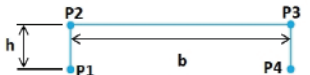
Installation size



Load - Frequency



Moving trajectory



Cyclic mode

P1 → P2 → P3 → P4 → P3 → P2 → P1

h (mm )	25	90	125	150	200	250	300
b (mm )	305	400	550	700	900	1200	1500

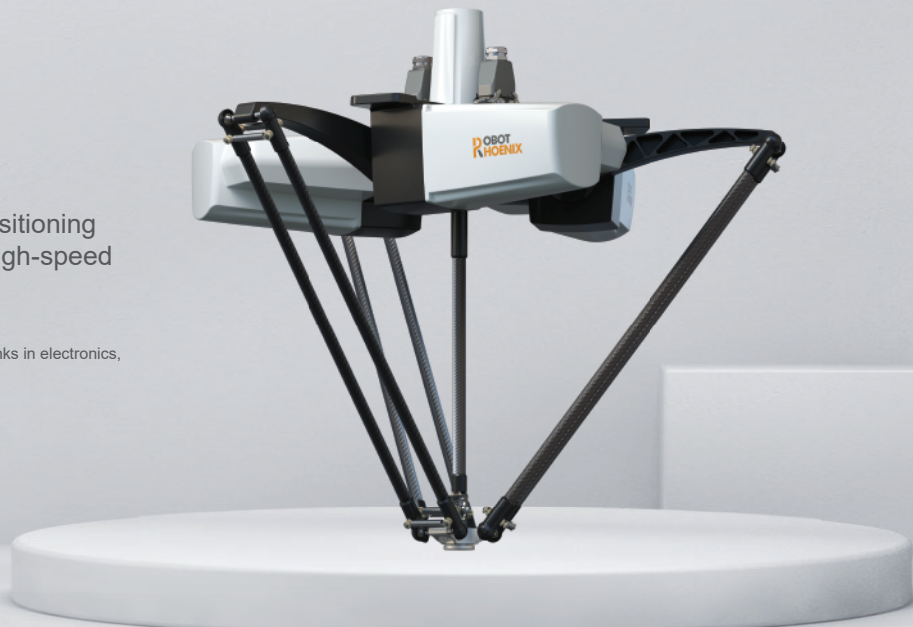
\*: Any changes resulting from upgrading our products will not be notified separately.

# Bat1300-S6


Applicable industries

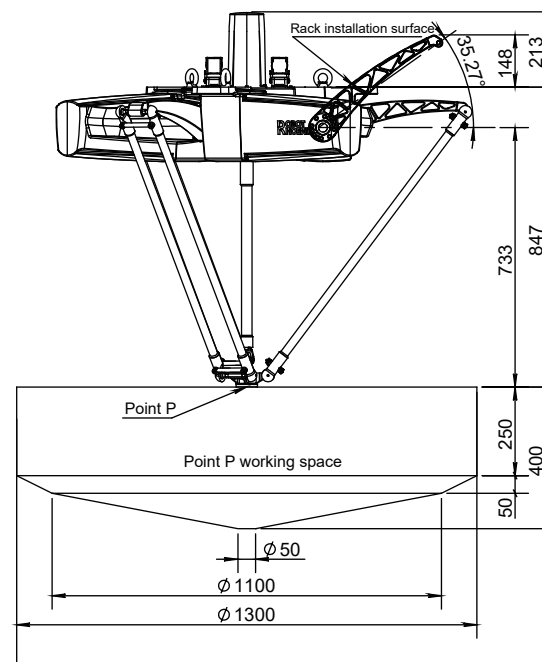
## Product features

Rated load	6kg
Working space diameter	1300mm
Repeat positioning accuracy	±0.05mm
Configuration	Standard 4-axis

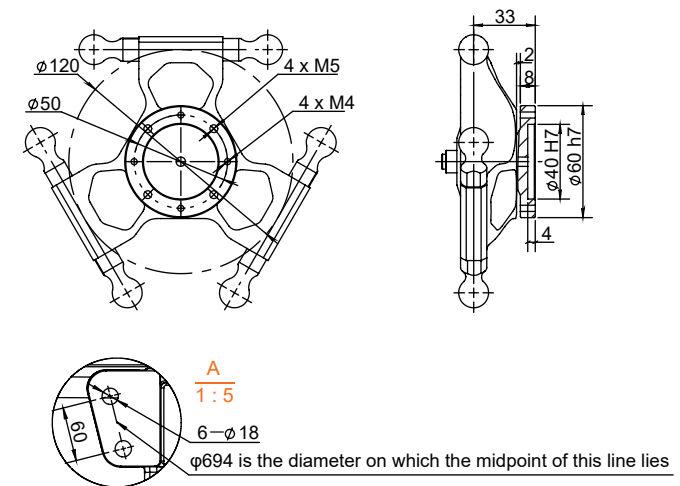
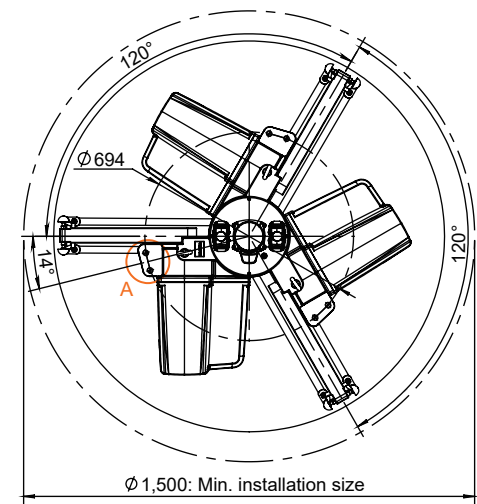


## Bat1300-S6

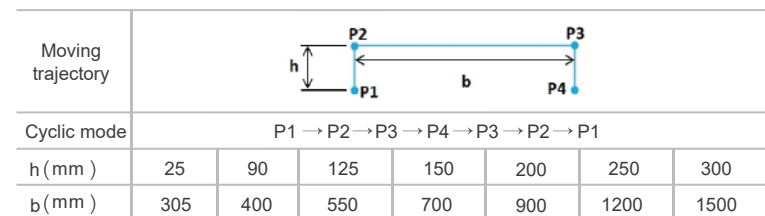
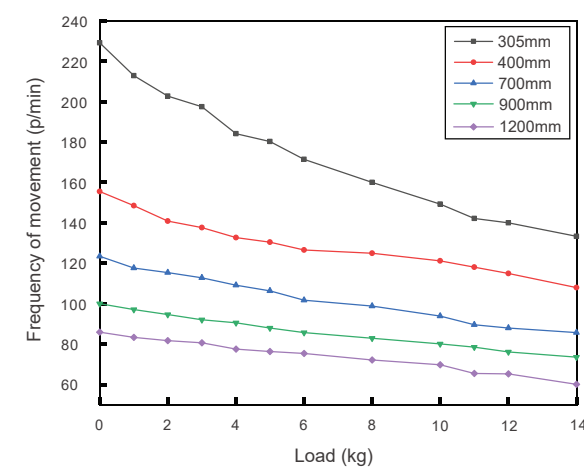
Rated load		6kg
Max. load		14kg
Working space diameter		1300mm
Number of axes		4
Repeat positioning accuracy		±0.05mm
4-axis repeat positioning accuracy		±0.1°
25/305/25	0.1kg	0.25s
	1kg	0.26s
	3kg	0.28s
	6kg	0.32s
90/400/90	0.1kg	0.36s
	1kg	0.36s
	3kg	0.38s
	6kg	0.41s
Power supply voltage		Three-phase AC 380 V±10%, 50/60 Hz
Rated power		6KW
Ambient temperature		0-45°C
Relative humidity		5-95%
Degree of protection		IP54
Safety		Equipped with monitoring, emergency stop, and installation functions
Radiation		EMC shielding
Installation method		Suspended type
Weight of the robot body		100kg
I/O interface		4-channel configurable digital I/O 8-channel universal digital I/O (8 additional I/O channels can be added) 2-channel encoder input
Ethernet		2
USB		2
RS232\RS485		1
EtherCAT		1
Communication protocol		Modbus-RTU/TCP、Socket
Certification		



## Installation size



## Load - Frequency



\*: For specific requirements regarding line selection, interface configuration, and other optional needs, please consult the technicians of RobotPhoenix.

\*: Any changes resulting from upgrading our products will not be notified separately.



Bat-series Delta Robot

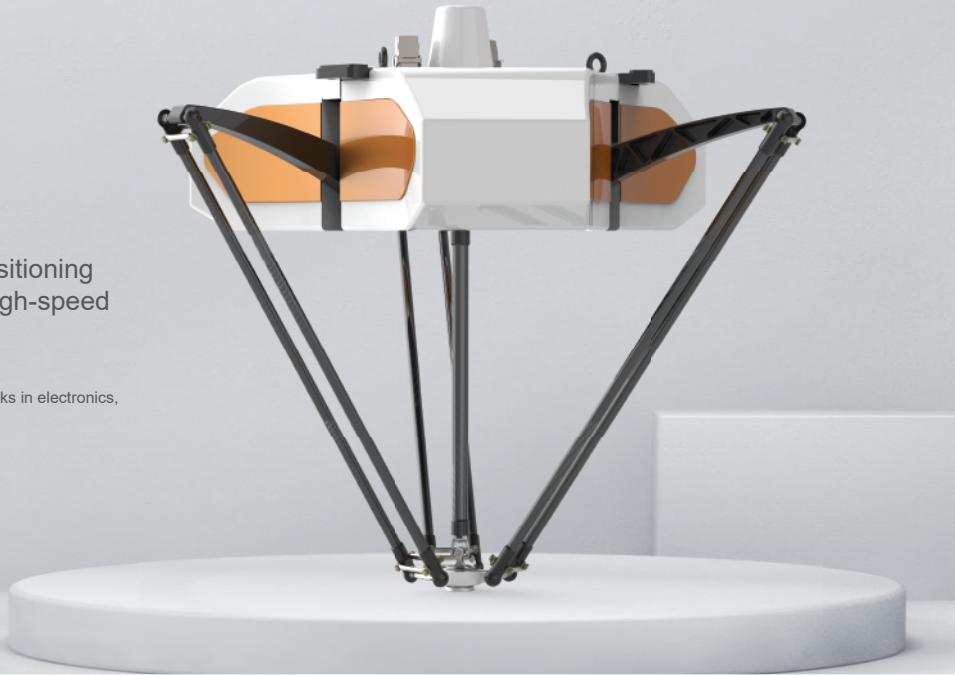
Bat1600-S6

It features high speed and agility, high positioning accuracy, and strong power, facilitating high-speed and high-precision flexible production.

Applicable industries  
Sorting, handling, loading and unloading, boxing, gluing, and other links in electronics, food, medicine, daily chemicals, logistics, and new energy.

Product features

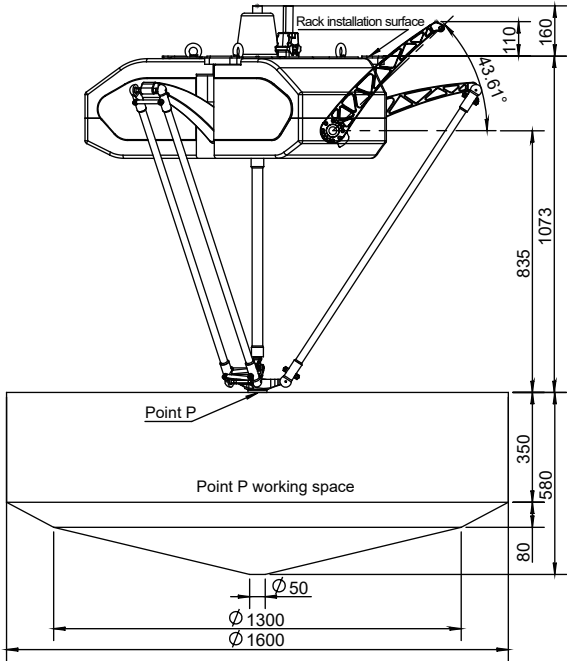
Rated load	6kg
Working space diameter	1600mm
Repeat positioning accuracy	±0.05mm
Configuration	Standard 4-axis



Specification			Bat1600-S6
Rated load			6kg
Max. load			14kg
Working space diameter			1300mm
Number of axes			4
Repeat positioning accuracy			±0.05mm
4-axis repeat positioning accuracy			±0.1°
25/305/25	0.1kg		0.25s
	1kg		0.27s
	3kg		0.30s
	6kg		0.33s
90/400/90	0.1kg		0.33s
	1kg		0.35s
	3kg		0.39s
	6kg		0.41s
Power supply voltage			Three-phase AC 380 V±10%, 50/60 Hz
Rated power			6KW
Ambient temperature			0-45°C
Relative humidity			5-95%
Degree of protection			IP54
Safety			Equipped with monitoring, emergency stop, and installation functions
Radiation			EMC shielding
Installation method			Hoisting
Weight of the robot body			155kg
I/O interface			4-channel configurable digital I/O 8-channel universal digital I/O (8 additional I/O channels can be added) 2-channel encoder input
Ethernet			2
USB			2
RS232\RS485			1
EtherCAT			1
Communication protocol			Modbus-RTU/TCP、Socket
Certification			CE

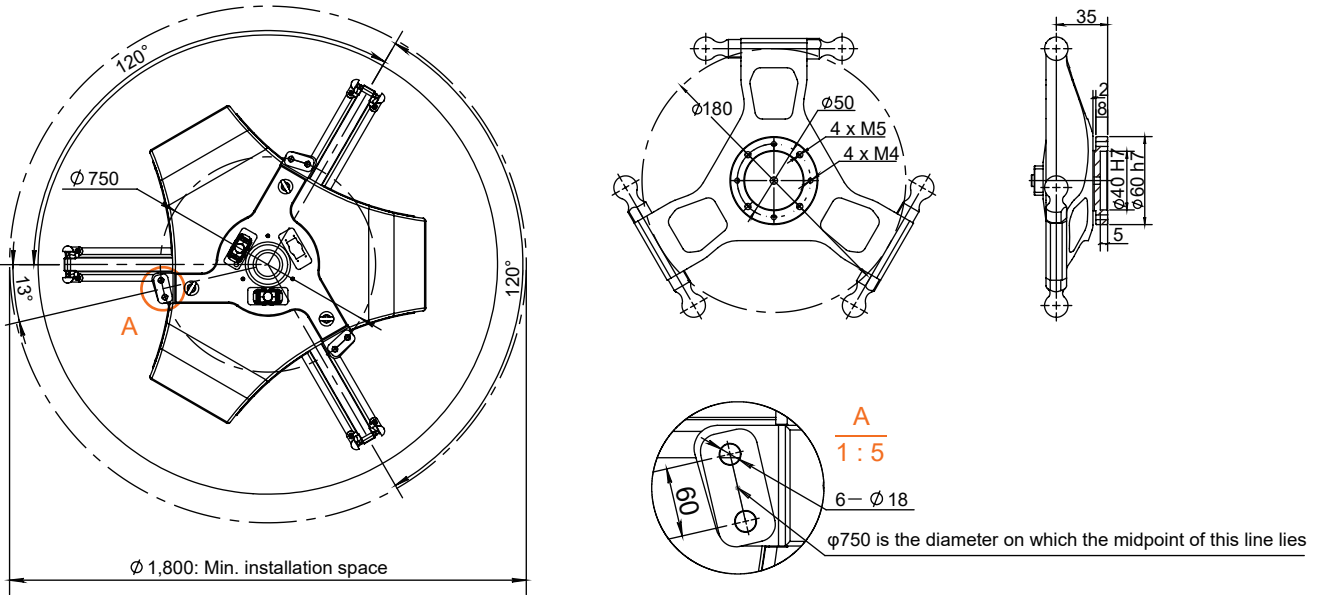
\*: For specific requirements regarding line selection, interface configuration, and other optional needs, please consult the technicians of RobotPhoenix.

Working range

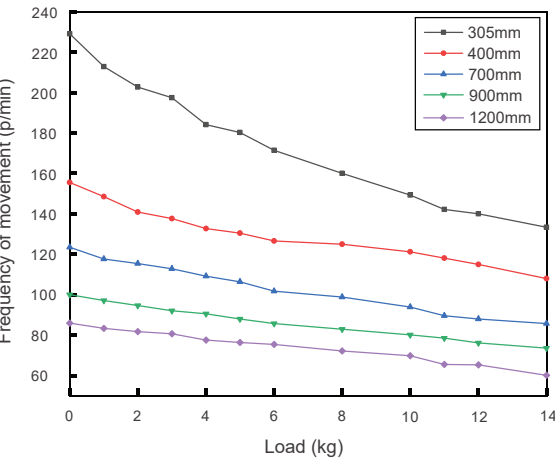


Model	Bat1600-S6
Distance from installation surface to top of equipment	160mm
Max. upper arm elevation and horizontal plane angle	43.61°
Max. elevation of the upper arm to the height of the installation surface	110mm
Distance from installation surface to upper plane of working space	1073mm
Distance from the reducer shaft center to the upper plane of the working space	835mm
Total height of the upper and lower limits of the working space	580mm
Height of the cylindrical part of the working space	350mm
Height of the conical frustum part of the working space	80mm
Transition diameter of the conical column in the working space	1300mm
Bottom diameter of the conical column in the working space	50mm
Diameter of the circular table part of the working space	1600mm
Min. installation size of the robot body	1800mm

Installation size (mm)



Load - Frequency



Moving trajectory							
Cyclic mode	P1 → P2 → P3 → P4 → P3 → P2 → P1						
h (mm)	25	90	125	150	200	250	300
b (mm)	305	400	550	700	900	1200	1500

\*: Any changes resulting from upgrading our products will not be notified separately.



Bat-series Delta Robot

Bat600C-S3

It features high speed and agility, high positioning accuracy and strong power, facilitating high-speed and high-precision flexible production.

Applicable industries  
Sorting, handling, loading and unloading, boxing, gluing, and other links in electronics, food, medicine, daily chemicals, logistics, and new energy.

Product features

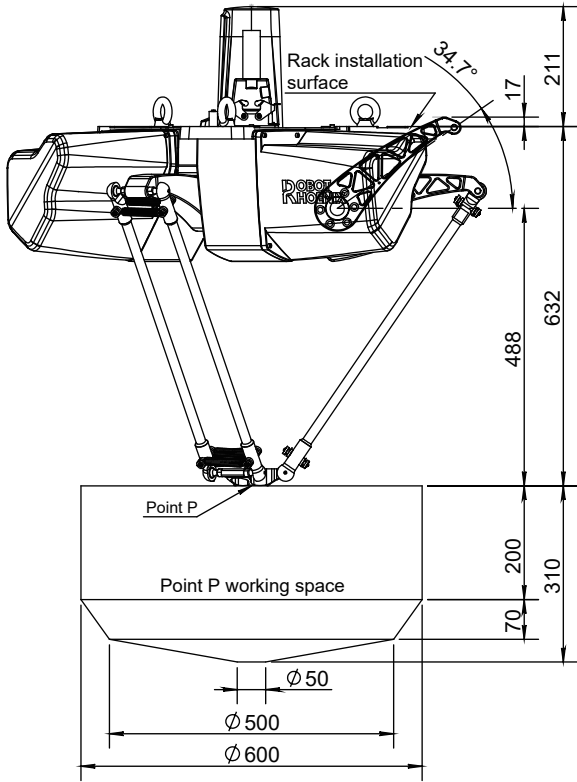
Load	3kg
Working space diameter	600mm
Repeat positioning accuracy	±0.05mm
Configuration	Standard 3-axis



Specification			Bat600C-S3
Rated load			3kg
Max. load			12kg
Working space diameter			600mm
Number of axes			3
Repeat positioning accuracy			±0.05mm
25/305/25	0.1kg		0.26s
	1kg		0.27s
	3kg		0.33s
90/400/90	0.1kg		0.33s
	1kg		0.34s
	3kg		0.38s
Power supply voltage			Three-phase AC 220 V±10%, 50/60 Hz
Rated power			3.2KW
Ambient temperature			0-45°C
Relative humidity			5-95%
Degree of protection			IP54
Safety			Equipped with monitoring, emergency stop, and installation functions
Radiation			EMC shielding
Installation method			Hoisting
Weight of the robot body			67kg
I/O interface			4-channel configurable digital I/O 8-channel universal digital I/O (8 additional I/O channels can be added) 2-channel encoder input
Ethernet			2
USB			2
RS232\RS485			1
EtherCAT			1
Communication protocol			Modbus-RTU/TCP、Socket

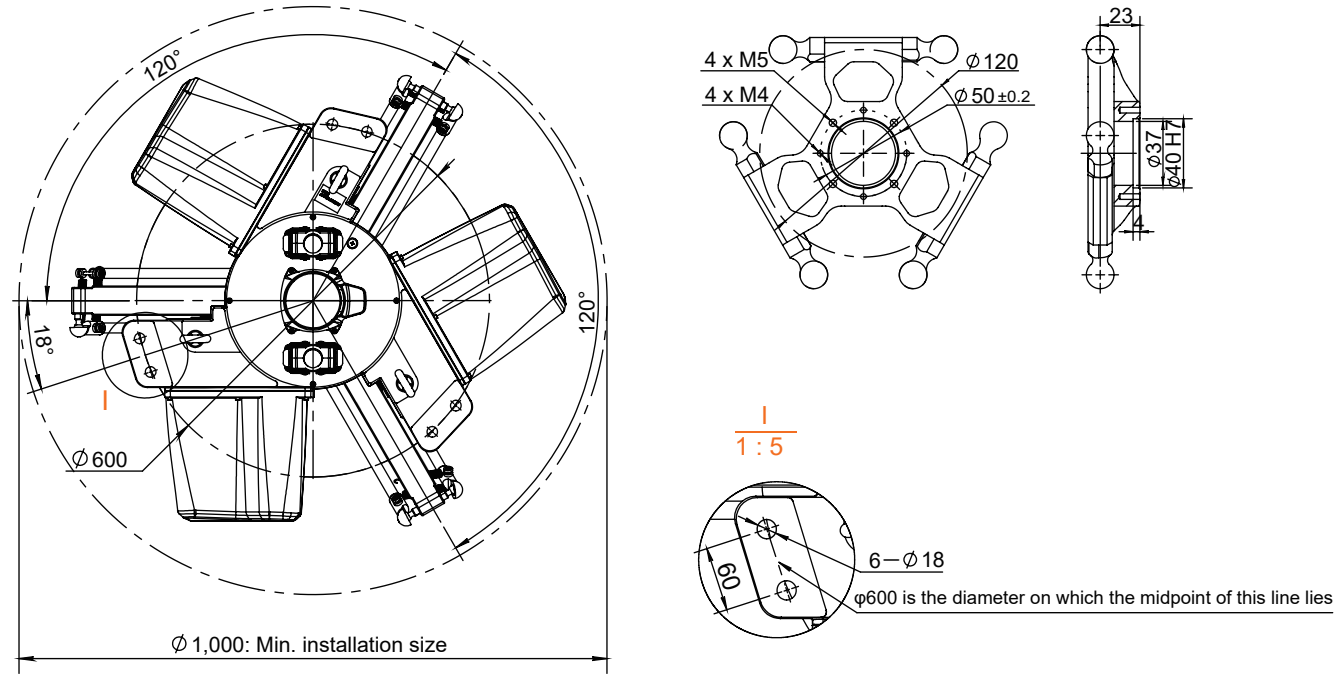
\*: For specific requirements regarding line selection, interface configuration, and other optional needs, please consult the technicians of RobotPhoenix.

Working range



Model	Bat600C-S3
Distance from installation surface to top of equipment	211mm
Max. upper arm elevation and horizontal plane angle	34.7°
Max. elevation of the upper arm to the height of the installation surface	17mm
Distance from installation surface to upper plane of working space	632mm
Distance from the reducer shaft center to the upper plane of the working space	488mm
Total height of the upper and lower limits of the working space	310mm
Height of the cylindrical part of the working space	200mm
Height of the conical frustum part of the working space	70mm
Transition diameter of the conical column in the working space	500mm
Bottom diameter of the conical column in the working space	50mm
Diameter of the circular table part of the working space	600mm
Min. installation size of the robot body	1000mm

Installation size



\*: Any changes resulting from upgrading our products will not be notified separately.

Bat-series Delta Robot

Bat800C-S3

It features high speed and agility, high positioning accuracy, and strong power, facilitating high-speed and high-precision flexible production.

Applicable industries  
Sorting, handling, loading and unloading, boxing, gluing, and other links in electronics, food, medicine, daily chemicals, logistics, and new energy.

Product features

Load	3kg
Working space diameter	800mm
Repeat positioning accuracy	±0.05mm
Configuration	Standard 3-axis

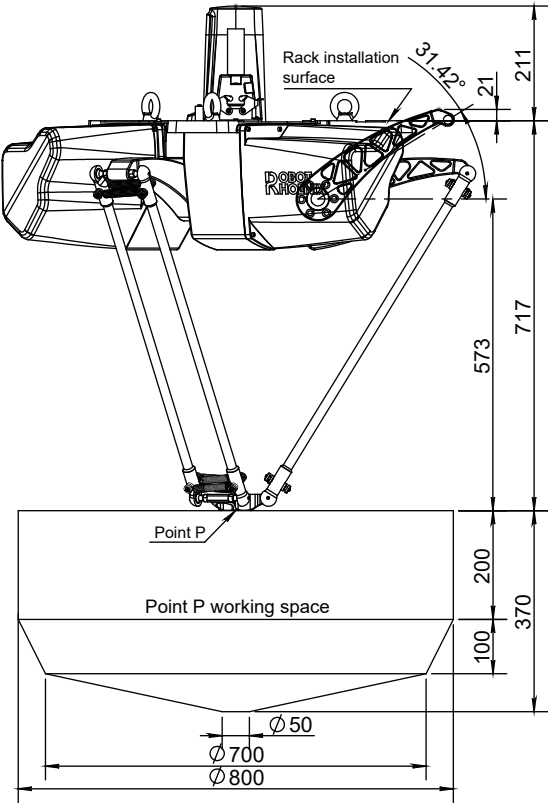


Specification

Bat800C-S3		
Rated load		
3kg		
Max. load		
12kg		
Working space diameter		
800mm		
Number of axes		
3		
Repeat positioning accuracy		
±0.05mm		
25/305/25	0.1kg	0.25s
	1kg	0.26s
	3kg	0.32s
90/400/90	0.1kg	0.33s
	1kg	0.34s
	3kg	0.38s
Power supply voltage		
Three-phase AC 380 V±10%, 50/60 Hz		
Rated power		
3.2KW		
Ambient temperature		
0-45°C		
Relative humidity		
5-95%		
Degree of protection		
IP54		
Safety		
Equipped with monitoring, emergency stop, and installation functions		
Radiation		
EMC shielding		
Installation method		
Hoisting		
Weight of the robot body		
68kg		
I/O interface		
4-channel configurable digital I/O 8-channel universal digital I/O (8 additional I/O channels can be added) 2-channel encoder input		
Ethernet		
2		
USB		
2		
RS232\RS485		
1		
EtherCAT		
1		
Communication protocol		
Modbus-RTU/TCP、Socket		

\*: For specific requirements regarding line selection, interface configuration, and other optional needs, please consult the technicians of RobotPhoenix.

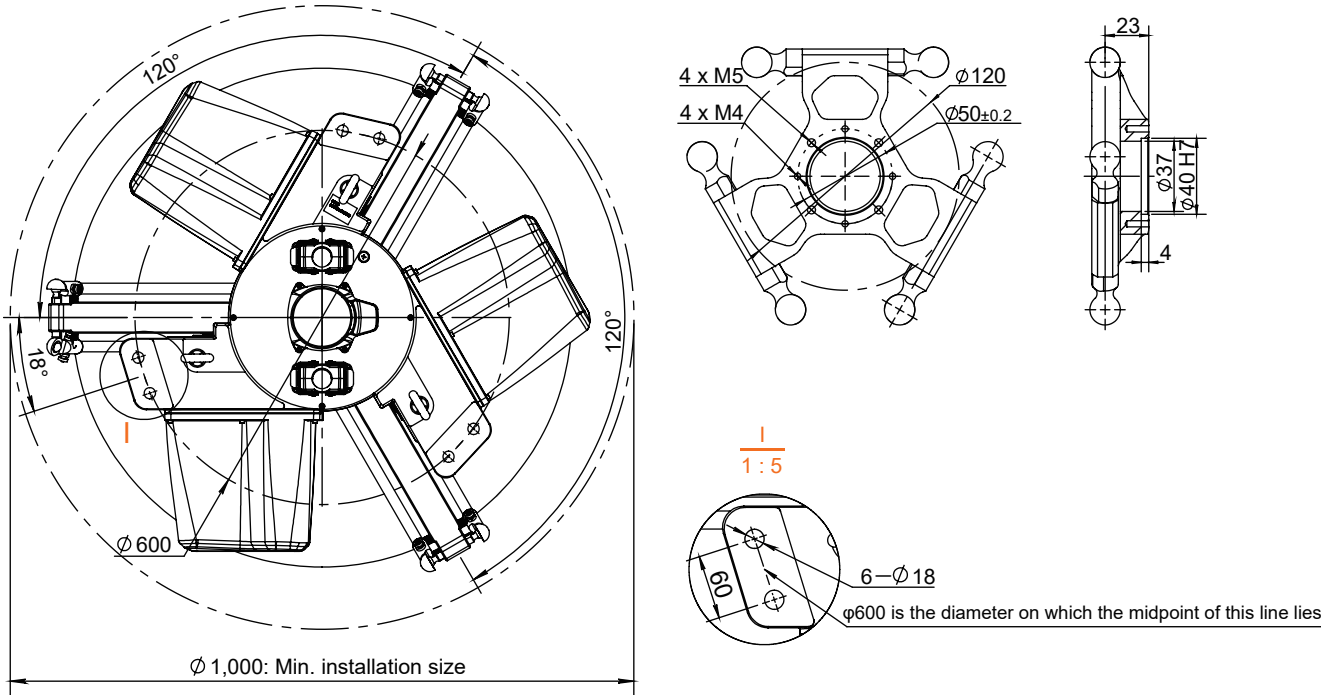
Working range



Model

Model	Bat800C-S3
Distance from installation surface to top of equipment	211mm
Max. upper arm elevation and horizontal plane angle	31.42°
Max. elevation of the upper arm to the height of the installation surface	21mm
Distance from installation surface to upper plane of working space	717mm
Distance from the reducer shaft center to the upper plane of the working space	573mm
Total height of the upper and lower limits of the working space	370mm
Height of the cylindrical part of the working space	200mm
Height of the conical frustum part of the working space	100mm
Transition diameter of the conical column in the working space	700mm
Bottom diameter of the conical column in the working space	50mm
Diameter of the circular table part of the working space	800mm
Min. installation size of the robot body	1000mm

Installation size



\*: Any changes resulting from upgrading our products will not be notified separately.



Bat-series Delta Robot

Bat1100C-S3

It features high speed and agility, high positioning accuracy, and strong power, facilitating high-speed and high-precision flexible production.

Applicable industries  
Sorting, handling, loading and unloading, boxing, gluing, and other links in electronics, food, medicine, daily chemicals, logistics, and new energy.

Product features

Load	3kg
Working space diameter	1100mm
Repeat positioning accuracy	±0.05mm
Configuration	Standard 3-axis

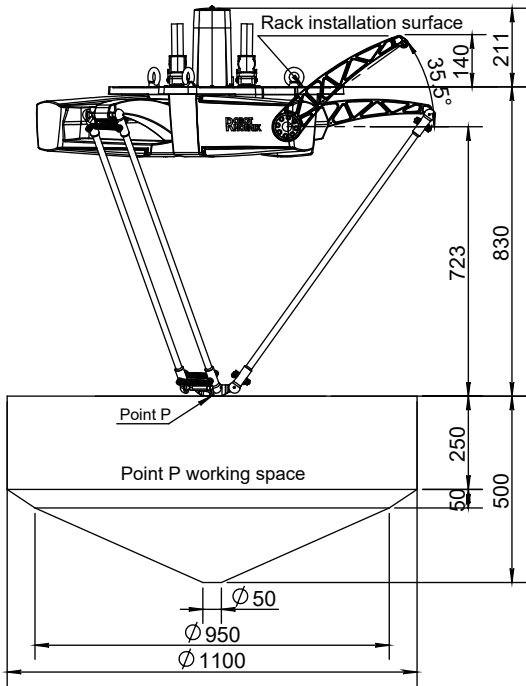


Specification

Bat1100C-S3

Rated load			3kg
Max. load			12kg
Working space diameter			1100mm
Number of axes			3
Repeat positioning accuracy			±0.05mm
25/305/25	0.1kg		0.23s
	1kg		0.24s
	3kg		0.30s
90/400/90	0.1kg		0.30s
	1kg		0.32s
	3kg		0.38s
Power supply voltage			Three-phase AC 380 V±10%, 50/60 Hz
Rated power			3.2KW
Ambient temperature			0-45°C
Relative humidity			5-95%
Degree of protection			IP54
Safety			Equipped with monitoring, emergency stop, and installation functions
Radiation			EMC shielding
Installation method			Hoisting
Weight of the robot body			58kg
I/O interface			4-channel configurable digital I/O 8-channel universal digital I/O (8 additional I/O channels can be added) 2-channel encoder input
Ethernet			2
USB			2
RS232\RS485			1
EtherCAT			1
Communication protocol			Modbus-RTU/TCP、Socket

Working range

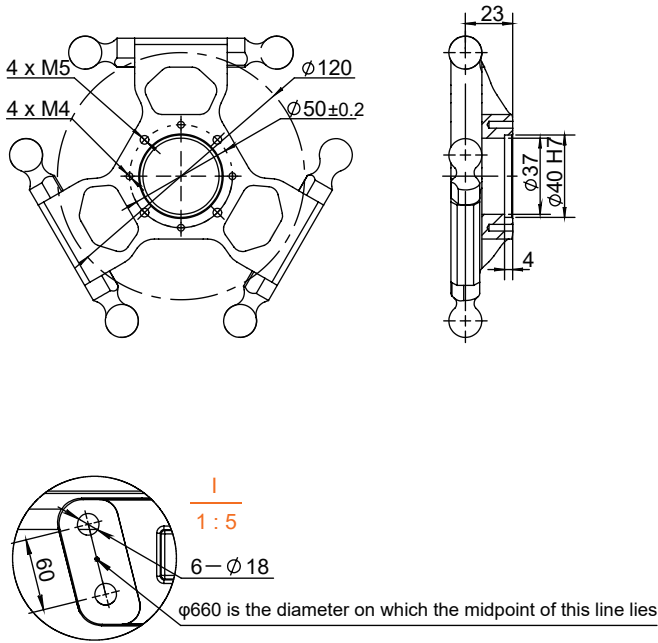
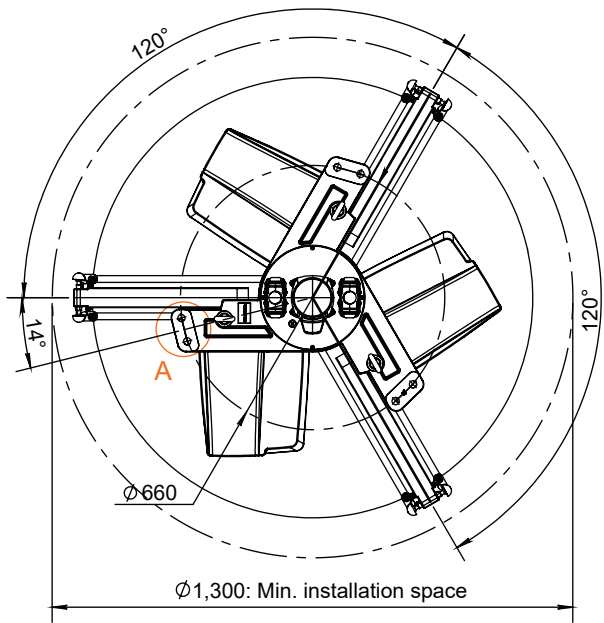


Model

Bat1100C-S3

Distance from installation surface to top of equipment	211mm
Max. upper arm elevation and horizontal plane angle	35.5°
Max. elevation of the upper arm to the height of the installation surface	140mm
Distance from installation surface to upper plane of working space	830mm
Distance from the reducer shaft center to the upper plane of the working space	723mm
Total height of the upper and lower limits of the working space	500mm
Height of the cylindrical part of the working space	250mm
Height of the conical frustum part of the working space	50mm
Transition diameter of the conical column in the working space	950mm
Bottom diameter of the conical column in the working space	50mm
Diameter of the circular table part of the working space	1100mm
Min. installation size of the robot body	1300mm

Installation size



\*: For specific requirements regarding line selection, interface configuration, and other optional needs, please consult the technicians of RobotPhoenix.

\*: Any changes resulting from upgrading our products will not be notified separately.

Bat-series Delta Robot

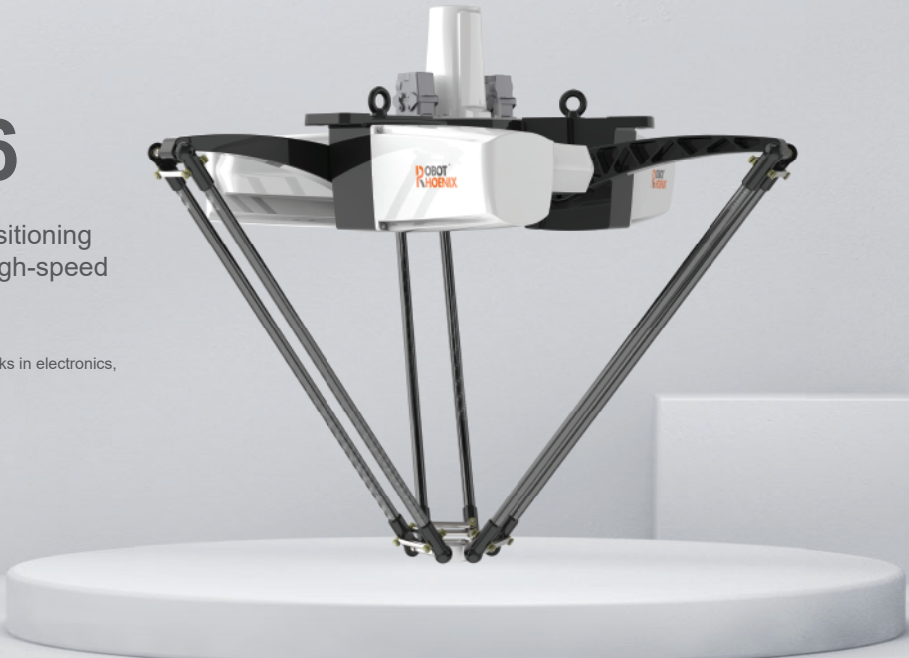
Bat1300C-S6

It features high speed and agility, high positioning accuracy, and strong power, facilitating high-speed and high-precision flexible production.

Applicable industries  
Sorting, handling, loading and unloading, boxing, gluing, and other links in electronics, food, medicine, daily chemicals, logistics, and new energy.

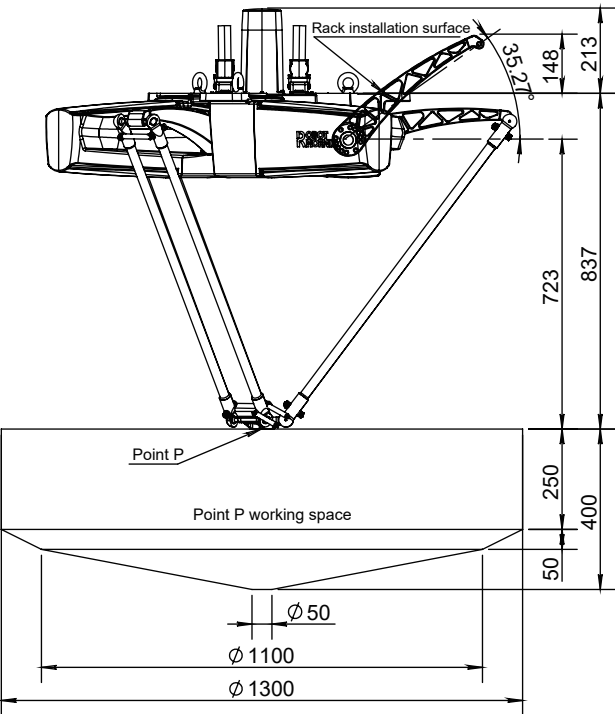
Product features

Rated load	6kg
Working space diameter	1300mm
Repeat positioning accuracy	±0.05mm
Configuration	Standard 3-axis



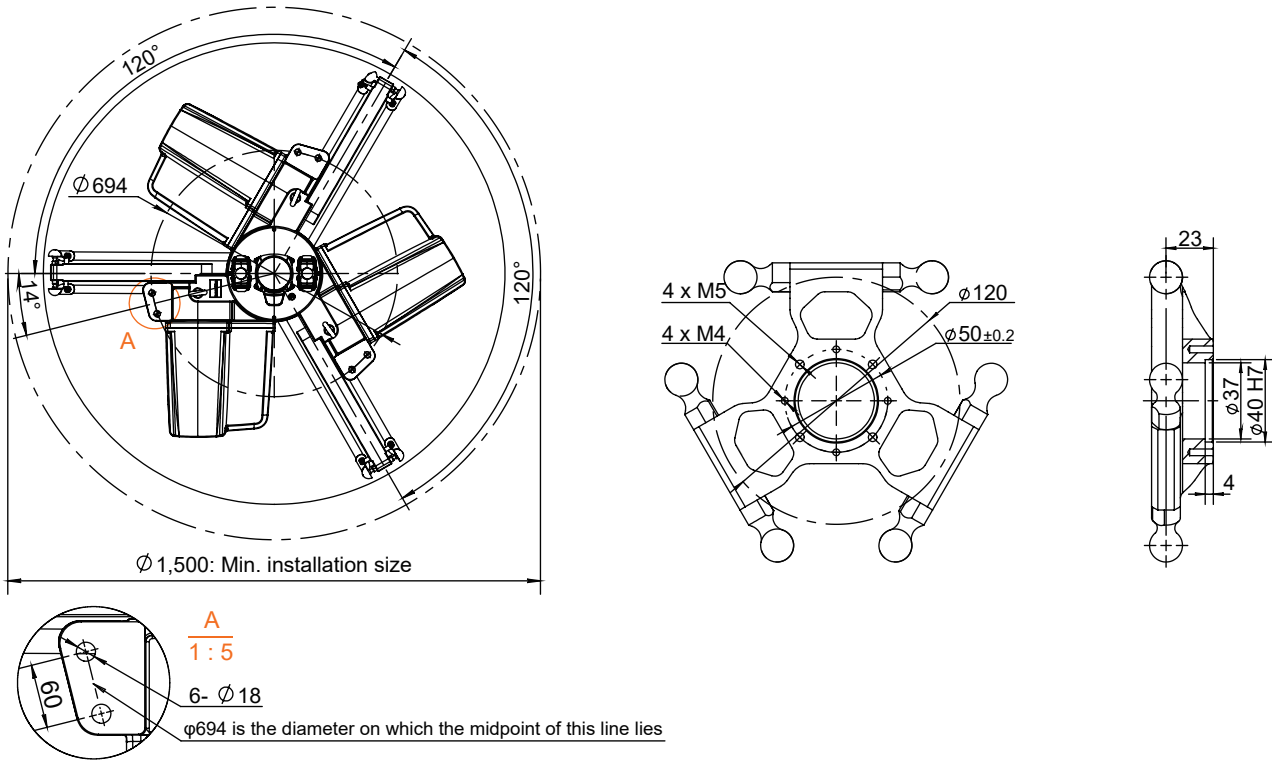
Specification			Bat1300C-S6
Rated load			6kg
Max. load			14kg
Working space diameter			1300mm
Number of axes			3
Repeat positioning accuracy			±0.05mm
25/305/25	0.1kg		0.24s
	1kg		0.25s
	3kg		0.27s
	6kg		0.31s
90/400/90	0.1kg		0.35s
	1kg		0.36s
	3kg		0.39s
	6kg		0.43s
Power supply voltage			Three-phase AC 380 V±10%, 50/60 Hz
Rated power			5.6KW
Ambient temperature			0-45°C
Relative humidity			5-95%
Degree of protection			IP54
Safety			Equipped with monitoring, emergency stop, and installation functions
Radiation			EMC shielding
Installation method			Suspended type
Weight of the robot body			95kg
I/O interface			4-channel configurable digital I/O 8-channel universal digital I/O (8 additional I/O channels can be added) 2-channel encoder input
Ethernet			2
USB			2
RS232\RS485			1
EtherCAT			1
Communication protocol			Modbus-RTU/TCP、Socket
Certification			CE

Working range



Model	Bat1300C-S6
Distance from installation surface to top of equipment	213mm
Max. upper arm elevation and horizontal plane angle	35.27°
Max. elevation of the upper arm to the height of the installation surface	148mm
Distance from installation surface to upper plane of working space	837mm
Distance from the reducer shaft center to the upper plane of the working space	723mm
Total height of the upper and lower limits of the working space	400mm
Height of the cylindrical part of the working space	250mm
Height of the conical frustum part of the working space	50mm
Transition diameter of the conical column in the working space	1100mm
Bottom diameter of the conical column in the working space	50mm
Diameter of the circular table part of the working space	1300mm
Min. installation size of the robot body	1500mm

Installation size



\*: For specific requirements regarding line selection, interface configuration, and other optional needs, please consult the technicians of RobotPhoenix.

\*: Any changes resulting from upgrading our products will not be notified separately.



Bat-series Delta Robot

Bat1600C-S6

It features high speed and agility, high positioning accuracy, and strong power, facilitating high-speed and high-precision flexible production.

**Applicable industries**  
Sorting, handling, loading and unloading, boxing, gluing, and other links in electronics, food, medicine, daily chemicals, logistics, and new energy.

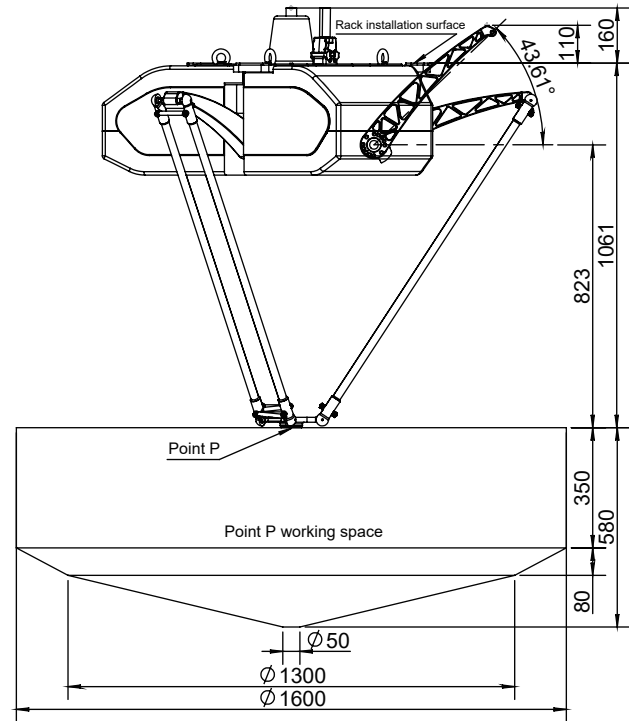
Product features

Rated load	6kg
Working space diameter	1600mm
Repeat positioning accuracy	±0.05mm
Configuration	Standard 3-axis



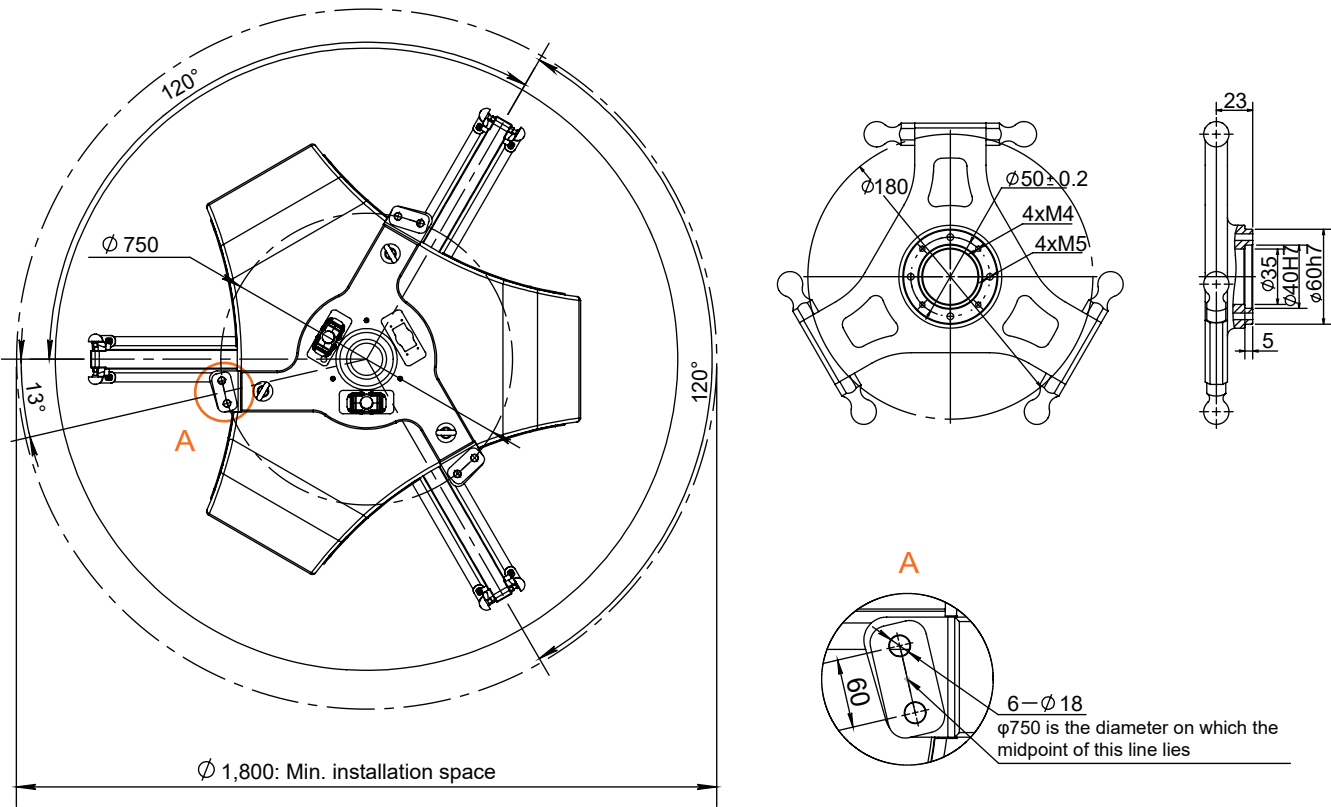
Specification			Bat1600C-S6
Rated load			6kg
Max. load			14kg
Working space diameter			1600mm
Number of axes			3
Repeat positioning accuracy			±0.05mm
25/305/25	0.1kg		0.25s
	1kg		0.31s
	3kg		0.32s
	6kg		0.37s
90/400/90	0.1kg		0.37s
	1kg		0.37s
	3kg		0.42s
	6kg		0.46s
Power supply voltage			Three-phase AC 380 V±10%, 50/60 Hz
Rated power			5.6KW
Ambient temperature			0-45°C
Relative humidity			5-95%
Degree of protection			IP54
Safety			Equipped with monitoring, emergency stop, and installation functions
Radiation			EMC shielding
Installation method			Suspended type
Weight of the robot body			150kg
I/O interface			4-channel configurable digital I/O 8-channel universal digital I/O (8 additional I/O channels can be added) 2-channel encoder input
Ethernet			2
USB			2
RS232\RS485			1
EtherCAT			1
Communication protocol			Modbus-RTU/TCP、Socket
Certification			CE

Working range



Model	Bat1600C-S6
Distance from installation surface to top of equipment	160mm
Max. upper arm elevation and horizontal plane angle	43.61°
Max. elevation of the upper arm to the height of the installation surface	110mm
Distance from installation surface to upper plane of working space	1061mm
Distance from the reducer shaft center to the upper plane of the working space	823mm
Total height of the upper and lower limits of the working space	580mm
Height of the cylindrical part of the working space	350mm
Height of the conical frustum part of the working space	80mm
Transition diameter of the conical column in the working space	1300mm
Bottom diameter of the conical column in the working space	50mm
Diameter of the circular table part of the working space	1600mm
Min. installation size of the robot body	1800mm

Installation size



\*: For specific requirements regarding line selection, interface configuration, and other optional needs, please consult the technicians of RobotPhoenix.

\*: Any changes resulting from upgrading our products will not be notified separately.



Bat-series Delta Robot

Bat250M-S0.5

It features high speed and agility, high positioning accuracy, and strong power, facilitating high-speed and high-precision flexible production.

Applicable industries

Sorting, handling, loading and unloading, boxing, gluing, and other links in electronics, food, medicine, daily chemicals, logistics, and new energy.

Product features

Load	0.5kg
Working space diameter	250mm
Repeat positioning accuracy	±0.05mm
Configuration	4th axis under-mounted



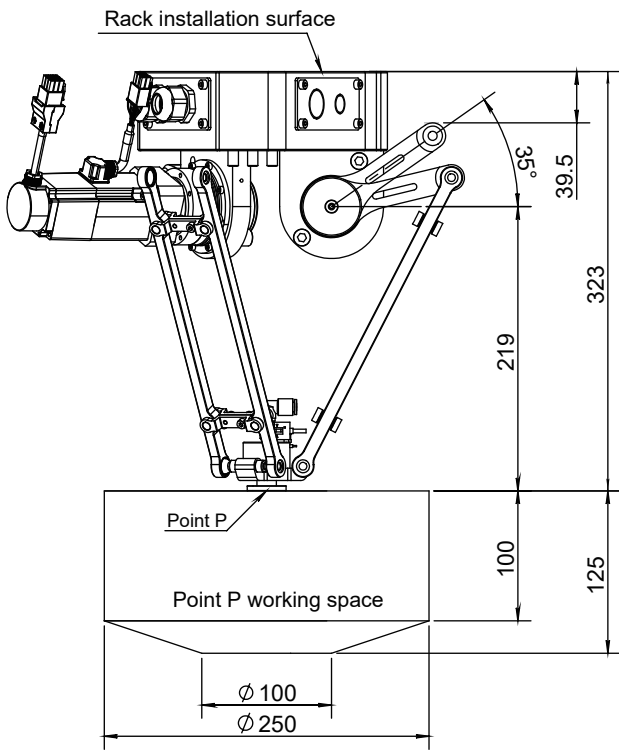
Specification

Bat250M-S0.5

Rated load			0.5kg
Working space diameter			250mm
Number of axes			4
Repeat positioning accuracy			±0.05mm
Angular repeat positioning accuracy			±0.1°
20/100/20	0.1kg	0.20s	
	0.5kg	0.40s	
25/200/25	0.1kg	0.31s	
	0.5kg	0.46s	
Power supply voltage			Single-phase AC 220 V±10%, 50/60 Hz
Rated power			0.5KW
Ambient temperature			0-45°C
Relative humidity			5-95%
Degree of protection			IP54
Safety			Equipped with monitoring, emergency stop, and safety functions
Radiation			EMC shielding
Installation method			Suspended type
Weight of the robot body			10kg
I/O interface			12-channel universal digital I/O; 2-channel encoder input
Ethernet			2
USB			1
RS232\RS485			1
EtherCAT			1
Communication protocol			Modbus-RTU/TCP、Socket

\*: For specific requirements regarding line selection, interface configuration, and other optional needs, please consult the technicians of RobotPhoenix.

Working range

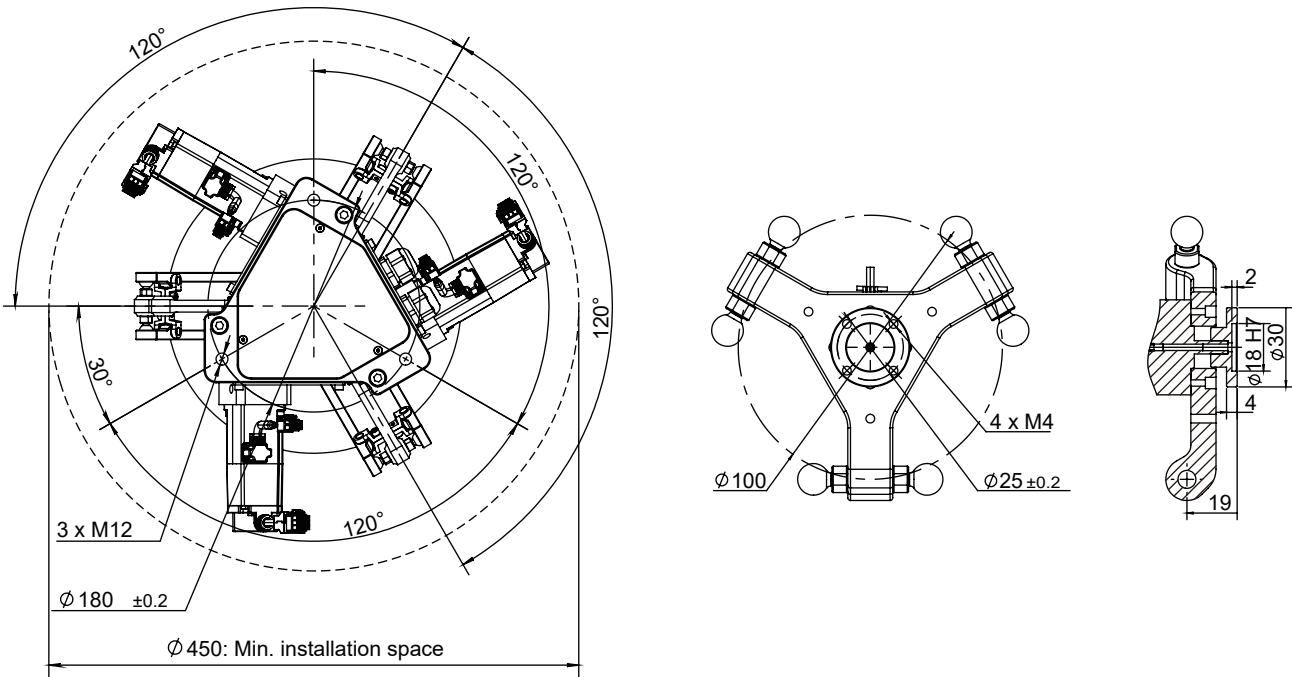


Model

Bat250M-S0.5

Distance from installation surface to top of equipment	0mm
Max. upper arm elevation and horizontal plane angle	35°
Max. elevation of the upper arm to the height of the installation surface	39.5mm
Distance from installation surface to upper plane of working space	323mm
Distance from the reducer shaft center to the upper plane of the working space	219mm
Total height of the upper and lower limits of the working space	125mm
Height of the cylindrical part of the working space	100mm
Height of the conical frustum part of the working space	25mm
Bottom diameter of the conical column in the working space	100mm
Diameter of the circular table part of the working space	250mm
Min. installation size of the robot body	450mm

Installation size



\*: Any changes resulting from upgrading our products will not be notified separately.

Bat-series Delta Robot

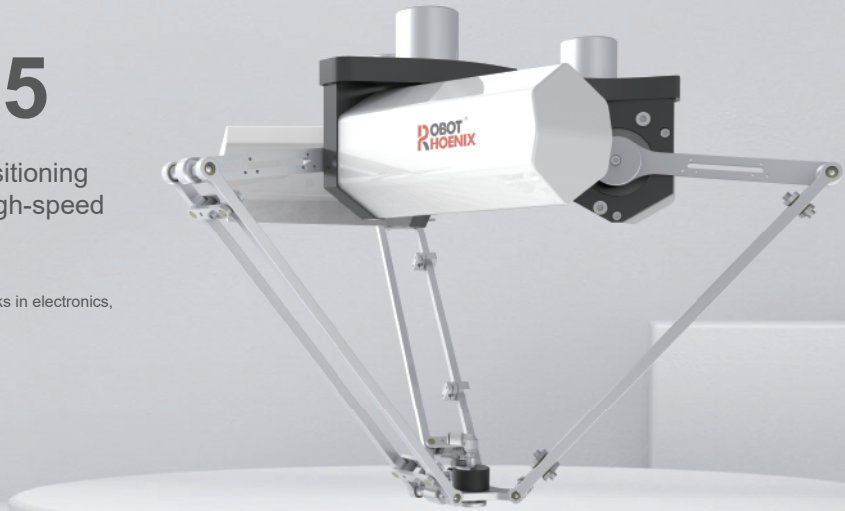
Bat360M-S0.5

It features high speed and agility, high positioning accuracy, and strong power, facilitating high-speed and high-precision flexible production.

Applicable industries  
Sorting, handling, loading and unloading, boxing, gluing, and other links in electronics, food, medicine, daily chemicals, logistics, and new energy.

Product features

Load	0.5kg
Working space diameter	360mm
Repeat positioning accuracy	±0.05mm
Configuration	4th axis under-mounted



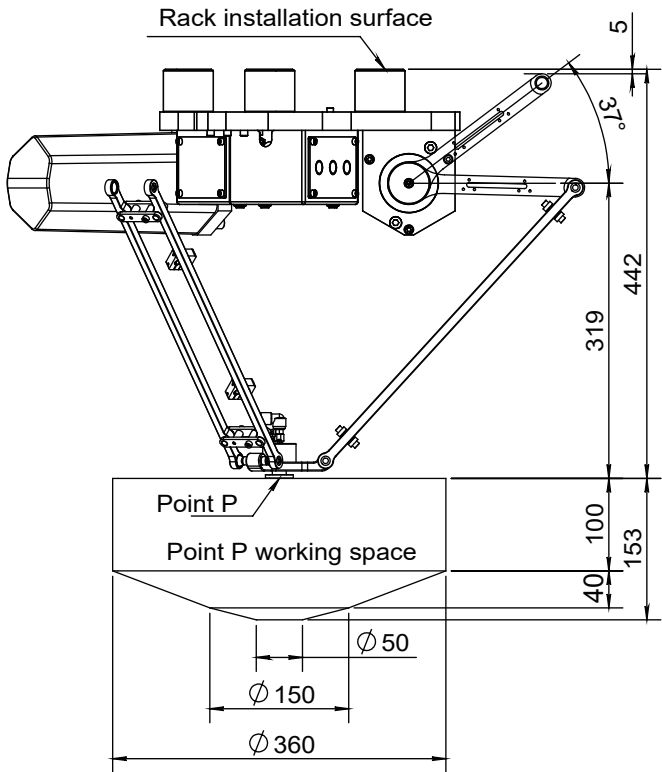
Specification

Bat360M-S0.5

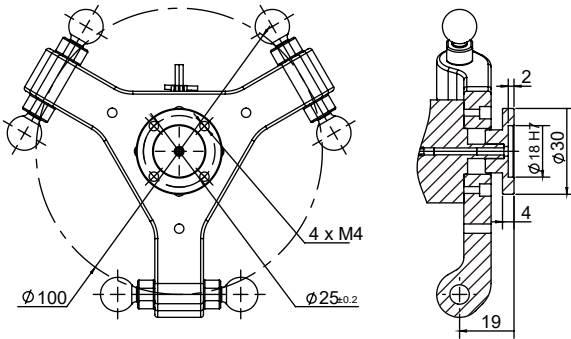
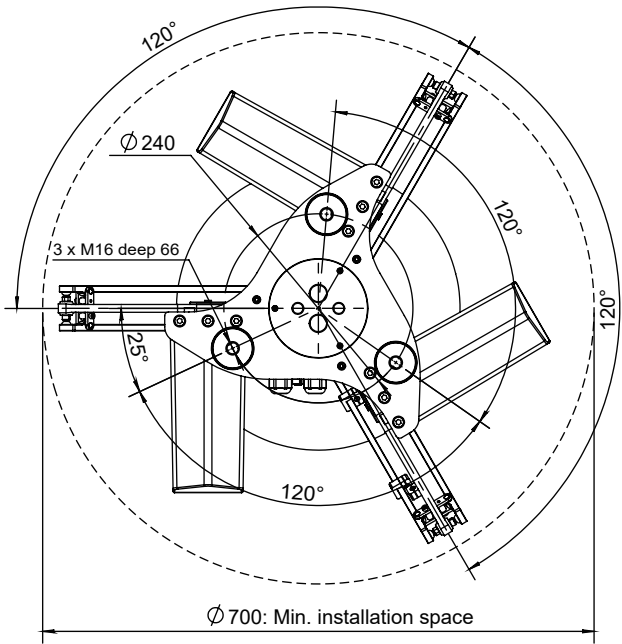
Rated load			0.5kg
Working space diameter			360mm
Number of axes			4
Repeat positioning accuracy			±0.05mm
Angular repeat positioning accuracy			±0.1°
20/100/20	0.1kg		0.19s
	0.5kg		0.19s
25/200/25	0.1kg		0.21s
	0.5kg		0.22s
25/305/25	0.1kg		0.28s
	0.5kg		0.28s
Power supply voltage			Single-phase AC 220 V±10%, 50/60 Hz
Rated power			0.8KW
Ambient temperature			0-45°C
Relative humidity			5-95%
Degree of protection			IP54
Safety			Equipped with monitoring, emergency stop, and installation functions
Radiation			EMC shielding
Installation method			Suspended type
Weight of the robot body			24kg
I/O interface			12-channel universal digital I/O; 2-channel encoder input
Ethernet			2
USB			1
RS232\RS485			1
EtherCAT			1
Communication protocol			Modbus-RTU/TCP、Socket

\*: For specific requirements regarding line selection, interface configuration, and other optional needs, please consult the technicians of RobotPhoenix.

Working range



Installation size



Model	Bat360M-S0.5
Distance from installation surface to top of equipment	0mm
Max. upper arm elevation and horizontal plane angle	37°
Max. elevation of the upper arm to the height of the installation surface	5mm
Distance from installation surface to upper plane of working space	442mm
Distance from the reducer shaft center to the upper plane of the working space	319mm
Total height of the upper and lower limits of the working space	153mm
Height of the cylindrical part of the working space	100mm
Height of the conical frustum part of the working space	40mm
Transition diameter of the conical column in the working space	150mm
Bottom diameter of the conical column in the working space	50mm
Diameter of the circular table part of the working space	360mm
Min. installation size of the robot body	700mm

\*: Any changes resulting from upgrading our products will not be notified separately.



Bat-series Delta Robot

Bat600M-S3

It features high speed and agility, high positioning accuracy, and strong power, facilitating high-speed and high-precision flexible production.

**Applicable industries**  
Sorting, handling, loading and unloading, boxing, gluing, and other links in electronics, food, medicine, daily chemicals, logistics, and new energy.

Product features

Load	3kg
Working space diameter	600mm
Repeat positioning accuracy	±0.05mm
Configuration	4th axis under-mounted

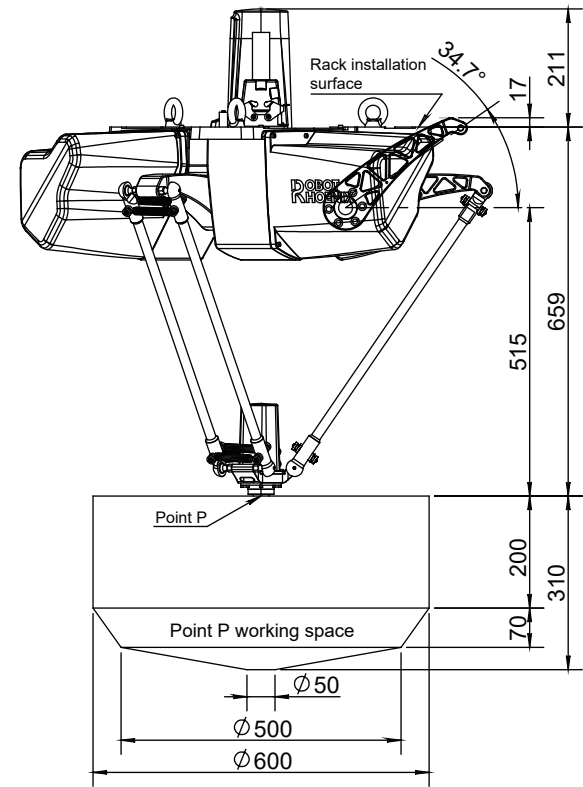


Specification

Bat600M-S3		
Rated load		
3kg		
Max. load		
6kg		
Working space diameter		
600mm		
Number of axes		
4		
Repeat positioning accuracy		
±0.05mm		
Angular repeat positioning accuracy		
±0.05°		
25/305/25	0.1kg	0.27s
	1kg	0.29s
	3kg	0.35s
90/400/90	0.1kg	0.35s
	1kg	0.37s
	3kg	0.42s
Power supply voltage		
Three-phase AC 380 V±10%, 50/60 Hz		
Rated power		
3.3KW		
Ambient temperature		
0-45°C		
Relative humidity		
5-95%		
Degree of protection		
IP54		
Safety		
Equipped with monitoring, emergency stop, and installation functions		
Radiation		
EMC shielding		
Installation method		
Suspended type		
Weight of the robot body		
69kg		
I/O interface		
4-channel configurable digital I/O 8-channel universal digital I/O (8 additional I/O channels can be added) 2-channel encoder input		
Ethernet		
2		
USB		
2		
RS232\RS485		
1		
EtherCAT		
1		
Communication protocol		
Modbus-RTU/TCP、Socket		

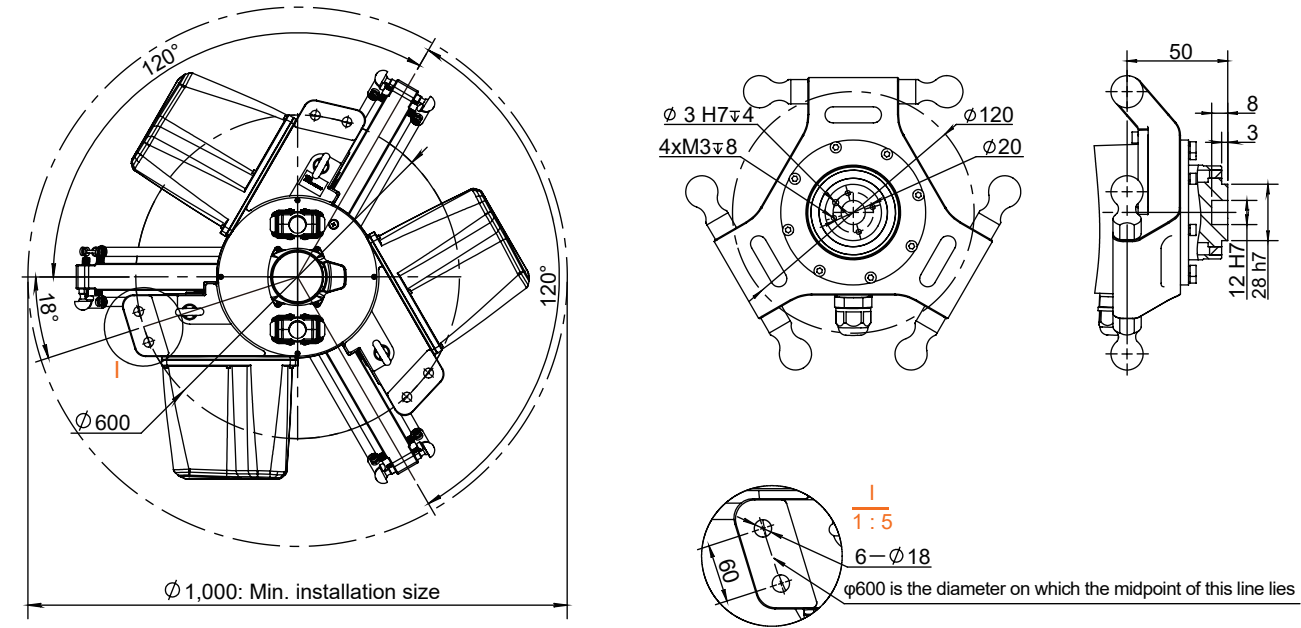
\*: For specific requirements regarding line selection, interface configuration, and other optional needs, please consult the technicians of RobotPhoenix.

Working range



Model	Bat600M-S3
Distance from installation surface to top of equipment	211mm
Max. upper arm elevation and horizontal plane angle	34.7°
Max. elevation of the upper arm to the height of the installation surface	17mm
Distance from installation surface to upper plane of working space	659mm
Distance from the reducer shaft center to the upper plane of the working space	515mm
Total height of the upper and lower limits of the working space	310mm
Height of the cylindrical part of the working space	200mm
Height of the conical frustum part of the working space	70mm
Transition diameter of the conical column in the working space	500mm
Bottom diameter of the conical column in the working space	50mm
Diameter of the circular table part of the working space	600mm
Min. installation size of the robot body	1000mm

Installation size



\*: Any changes resulting from upgrading our products will not be notified separately.

## Bat-series Delta Robot

# Bat800M-S3

It features high speed and agility, high positioning accuracy, and strong power, facilitating high-speed and high-precision flexible production.

#### Applicable industries

Sorting, handling, loading and unloading, boxing, gluing, and other links in electronics, food, medicine, daily chemicals, logistics, and new energy.

#### Product features

Load	3kg
Working space diameter	800mm
Repeat positioning accuracy	±0.05mm
Configuration	4-axis mobile platform under-mounted

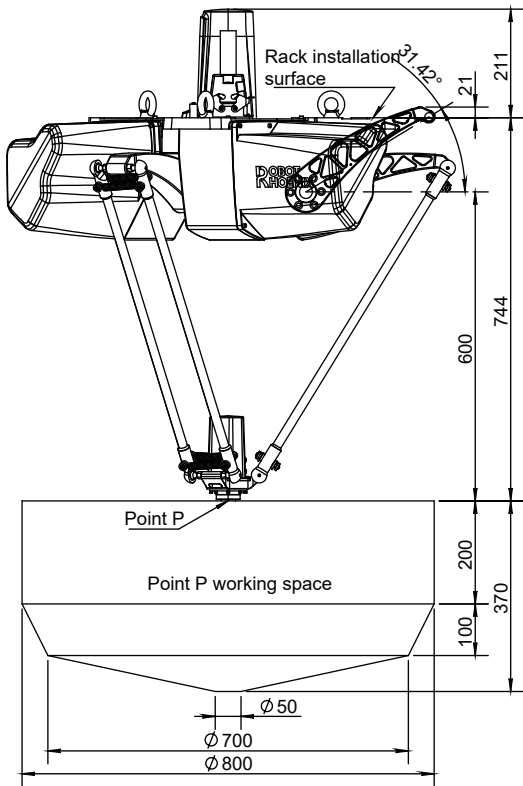


### Specification

#### Bat800M-S3

Rated load			3kg
Max. load			10kg
Working space diameter			800mm
Number of axes			4
Repeat positioning accuracy			±0.05mm
Angular repeat positioning accuracy			±0.05°
25/305/25	0.1kg		0.26s
	1kg		0.29s
	3kg		0.34s
90/400/90	0.1kg		0.35s
	1kg		0.37s
	3kg		0.42s
Power supply voltage			Three-phase AC 380 V±10%, 50/60 Hz
Rated power			3.3KW
Ambient temperature			0-45°C
Relative humidity			5-95%
Degree of protection			IP54
Safety			Equipped with monitoring, emergency stop, and installation functions
Radiation			EMC shielding
Installation method			Suspended type
Weight of the robot body			70kg
I/O interface			4-channel configurable digital I/O 8-channel universal digital I/O (8 additional I/O channels can be added) 2-channel encoder input
Ethernet			2
USB			2
RS232\RS485			1
EtherCAT			1
Communication protocol			Modbus-RTU/TCP、Socket
Certification			CE

### Working range

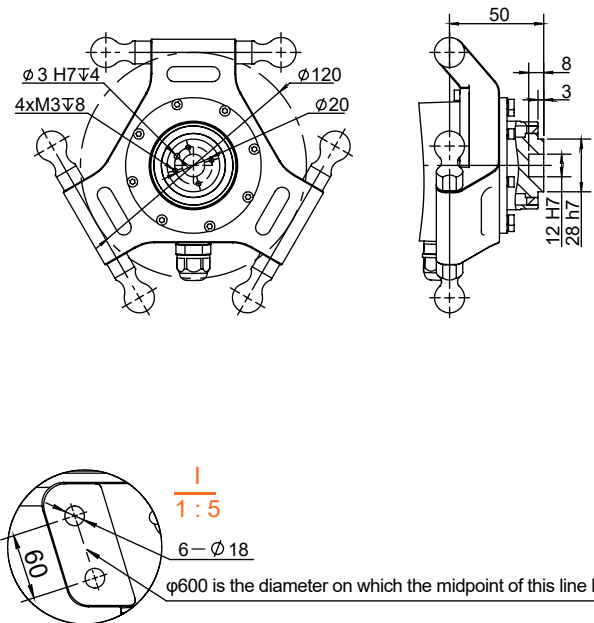
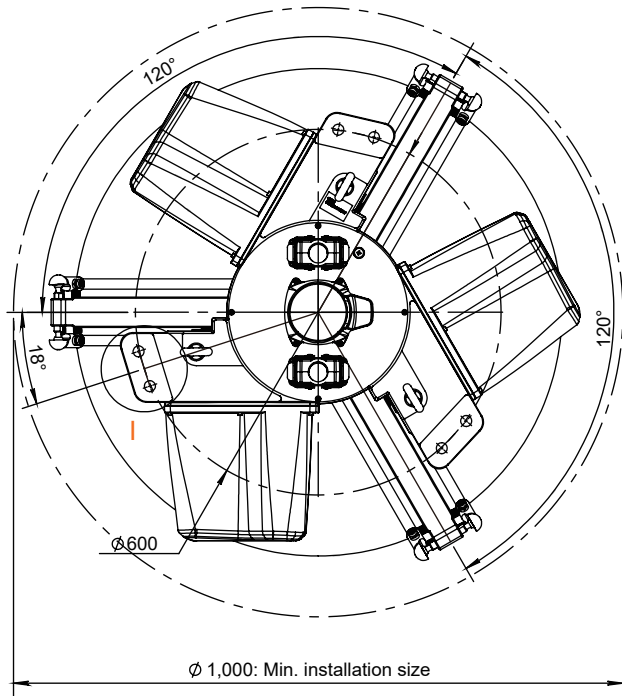


#### Model

#### Bat800M-S3

Distance from installation surface to top of equipment	211mm
Max. upper arm elevation and horizontal plane angle	31.42°
Max. elevation of the upper arm to the height of the installation surface	21mm
Distance from installation surface to upper plane of working space	744mm
Distance from the reducer shaft center to the upper plane of the working space	600mm
Total height of the upper and lower limits of the working space	330mm
Height of the cylindrical part of the working space	200mm
Height of the conical frustum part of the working space	100mm
Transition diameter of the conical column in the working space	700mm
Bottom diameter of the conical column in the working space	50mm
Diameter of the circular table part of the working space	800mm
Min. installation size of the robot body	1000mm

### Installation size



\*: For specific requirements regarding line selection, interface configuration, and other optional needs, please consult the technicians of RobotPhoenix.

\*: Any changes resulting from upgrading our products will not be notified separately.



Bat-series Delta Robot

Bat1100M-S3

It features high speed and agility, high positioning accuracy and strong power, facilitating high-speed and high-precision flexible production.

Applicable industries  
Sorting, handling, loading and unloading, boxing, gluing, and other links in electronics, food, medicine, daily chemicals, logistics, and new energy.

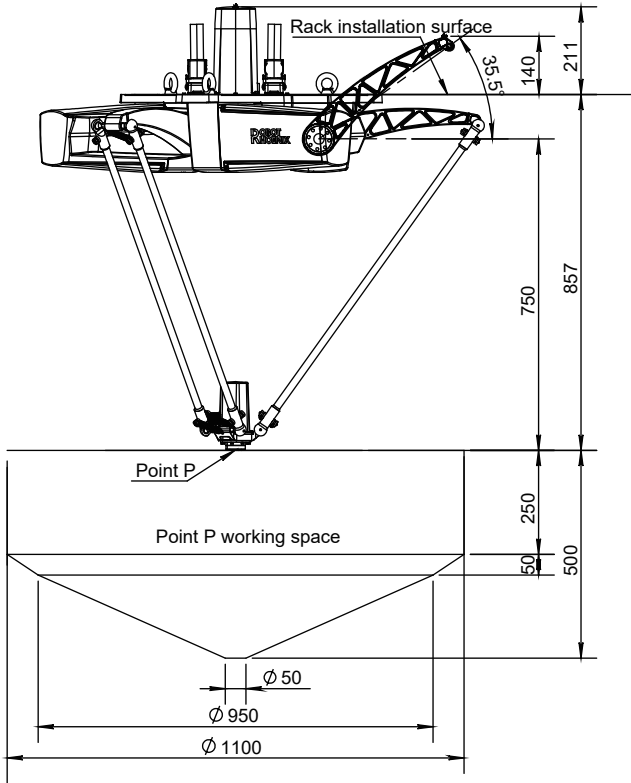
Product features

Load	3kg
Working space diameter	1100mm
Repeat positioning accuracy	±0.05mm
Configuration	4th axis under-mounted



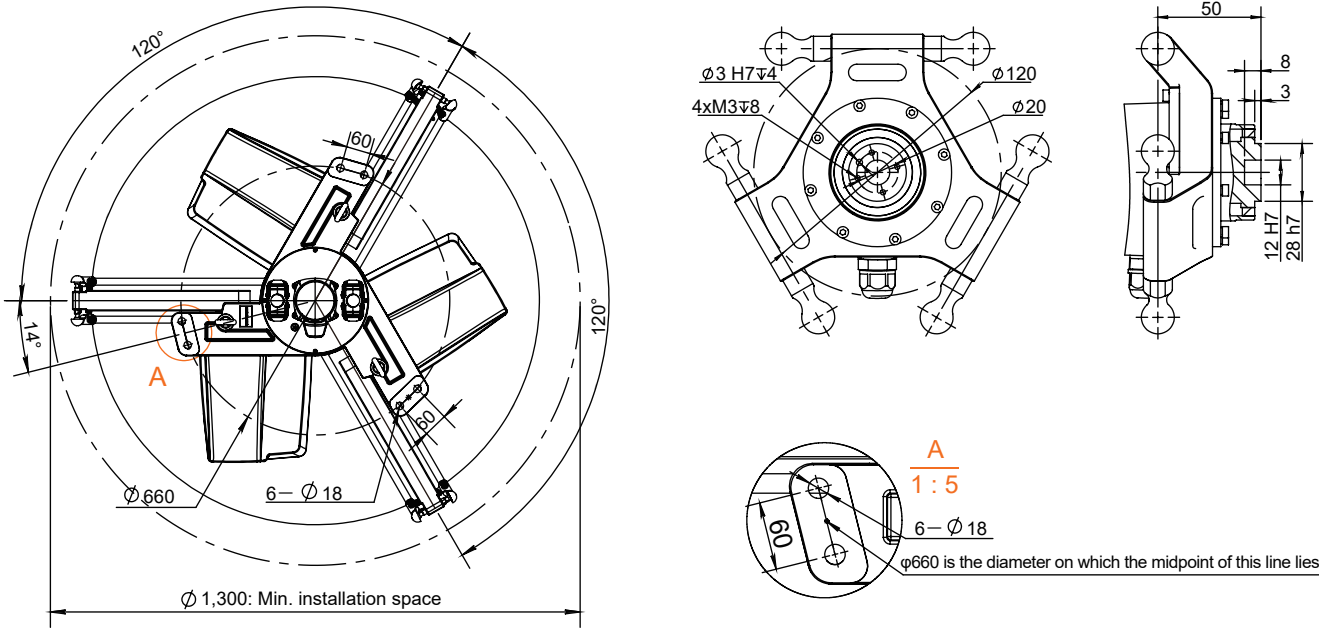
Specification			Bat1100M-S3
Rated load			3kg
Max. load			10kg
Working space diameter			1100mm
Number of axes			4
Repeat positioning accuracy			±0.05mm
Angular repeat positioning accuracy			±0.05°
25/305/25	0.1kg		0.26s
	1kg		0.29s
	3kg		0.34s
90/400/90	0.1kg		0.35s
	1kg		0.37s
	3kg		0.42s
Power supply voltage			Three-phase AC 380 V±10%, 50/60 Hz
Rated power			3.3KW
Ambient temperature			0-45°C
Relative humidity			5-95%
Degree of protection			IP54
Safety			Equipped with monitoring, emergency stop, and installation functions
Radiation			EMC shielding
Installation method			Suspended type
Weight of the robot body			60kg
I/O interface			4-channel configurable digital I/O 8-channel universal digital I/O (8 additional I/O channels can be added) 2-channel encoder input
Ethernet			2
USB			2
RS232\RS485			1
EtherCAT			1
Communication protocol			Modbus-RTU/TCP、Socket
Certification			CE

Working range



Model	Bat1100M-S3
Distance from installation surface to top of equipment	211mm
Max. upper arm elevation and horizontal plane angle	35.5°
Max. elevation of the upper arm to the height of the installation surface	140mm
Distance from installation surface to upper plane of working space	857mm
Distance from the reducer shaft center to the upper plane of the working space	750mm
Total height of the upper and lower limits of the working space	500mm
Height of the cylindrical part of the working space	250mm
Height of the conical frustum part of the working space	50mm
Transition diameter of the conical column in the working space	950mm
Bottom diameter of the conical column in the working space	50mm
Diameter of the circular table part of the working space	1100mm
Min. installation size of the robot body	1300mm

Installation size



\*: For specific requirements regarding line selection, interface configuration, and other optional needs, please consult the technicians of RobotPhoenix.

\*: Any changes resulting from upgrading our products will not be notified separately.



Bat-series Delta Robot

Bat1300M-S15

It features high speed and agility, high positioning accuracy, and strong power, facilitating high-speed and high-precision flexible production.

Applicable Industries  
Sorting, handling, loading and unloading, boxing, gluing, and other links in electronics, food, medicine, daily chemicals, logistics, and new energy.

Product features

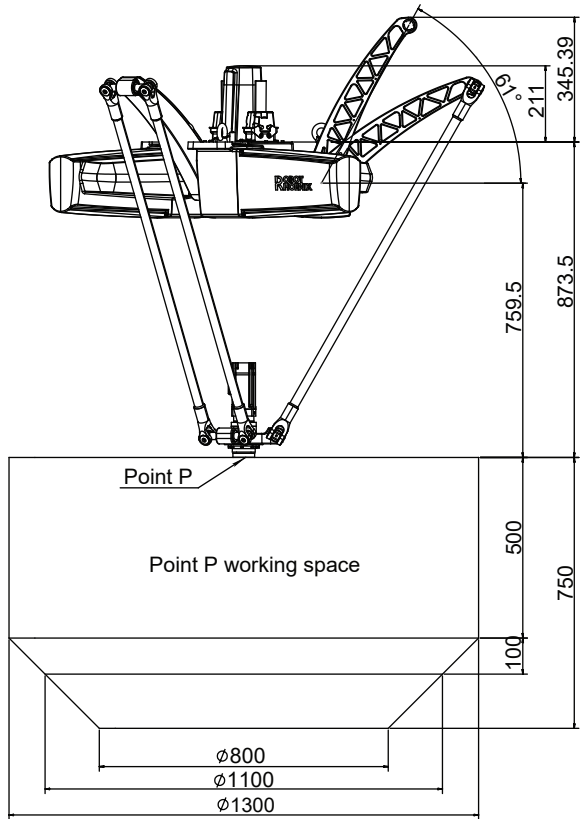
Load	15kg
Working space diameter	1300mm
Repeat positioning accuracy	±0.1mm
Configuration	4th axis under-mounted



Specification			Bat1300M-S15
Rated load			15kg
Working space diameter			1300mm
Number of axes			4
Repeat positioning accuracy			±0.1mm
Angular repeat positioning accuracy			±0.05°
25/305/25	0.1kg		\
	3kg		0.38s
	6kg		0.42s
90/400/90	3kg		0.45s
	6kg		0.5s
	15kg		0.61s
Power supply voltage			Three-phase AC 380 V±10%, 50/60 Hz
Rated power			6.6KW
Ambient temperature			0-45°C
Relative humidity			5-95%
Degree of protection			IP54
Safety			Equipped with monitoring, emergency stop, and installation functions
Radiation			EMC shielding
Installation method			Suspended type
Weight of the robot body			/
I/O interface			4-channel configurable digital I/O 8-channel universal digital I/O (8 additional I/O channels can be added) 2-channel encoder input
Ethernet			2
USB			2
RS232\RS485			1
EtherCAT			1
Communication protocol			Modbus-RTU/TCP、Socket
Certification			CE

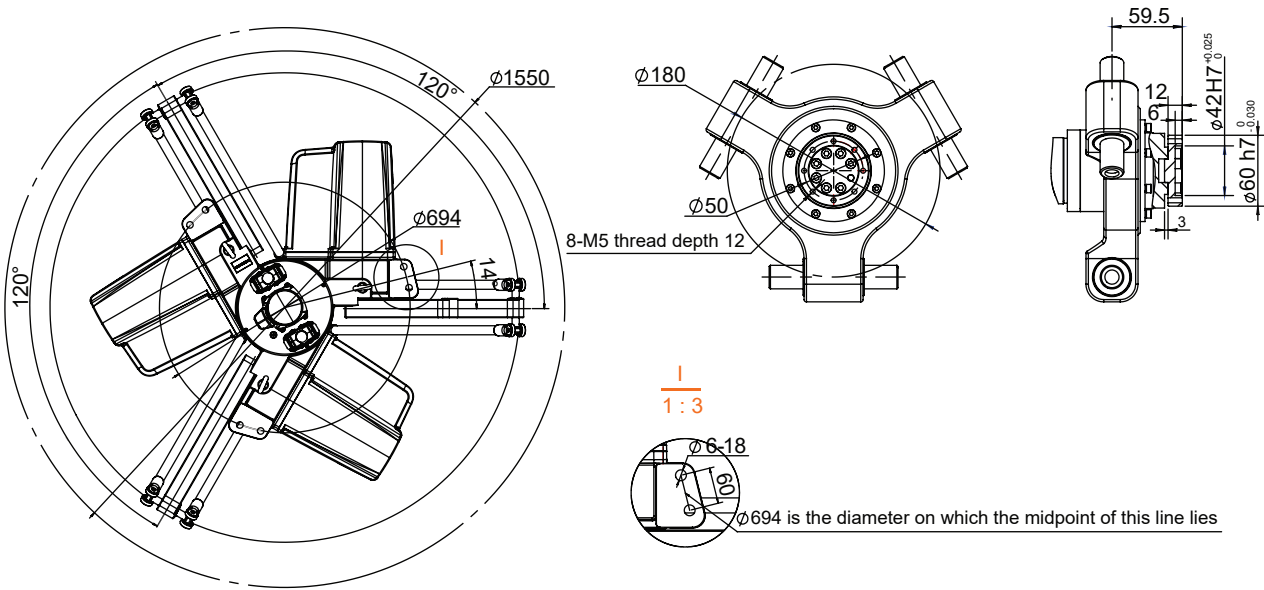
\*: For specific requirements regarding line selection, interface configuration, and other optional needs, please consult the technicians of RobotPhoenix.

Working range



Model	Bat1300M-S15
Distance from installation surface to top of equipment	211mm
Max. upper arm elevation and horizontal plane angle	61°
Max. elevation of the upper arm to the height of the installation surface	345.39mm
Distance from installation surface to upper plane of working space	873.5mm
Distance from the reducer shaft center to the upper plane of the working space	759.5mm
Total height of the upper and lower limits of the working space	750mm
Height of the cylindrical part of the working space	500mm
Height of the conical frustum part of the working space	100mm
Transition diameter of the conical column in the working space	1100mm
Bottom diameter of the conical column in the working space	800mm
Diameter of the circular table part of the working space	1300mm
Min. installation size of the robot body	1550mm

Installation size



\*: Any changes resulting from upgrading our products will not be notified separately.

Bat-series Delta Robot

Bat2000M-S15

It features high speed and agility, high positioning accuracy, and strong power, facilitating high-speed and high-precision flexible production.

Applicable industries  
Sorting, handling, loading and unloading, boxing, gluing, and other links in electronics, food, medicine, daily chemicals, logistics, and new energy.

Product features

Rated load	15kg
Working space diameter	2000mm
Repeat positioning accuracy	±0.1mm
Configuration	4th axis under-mounted

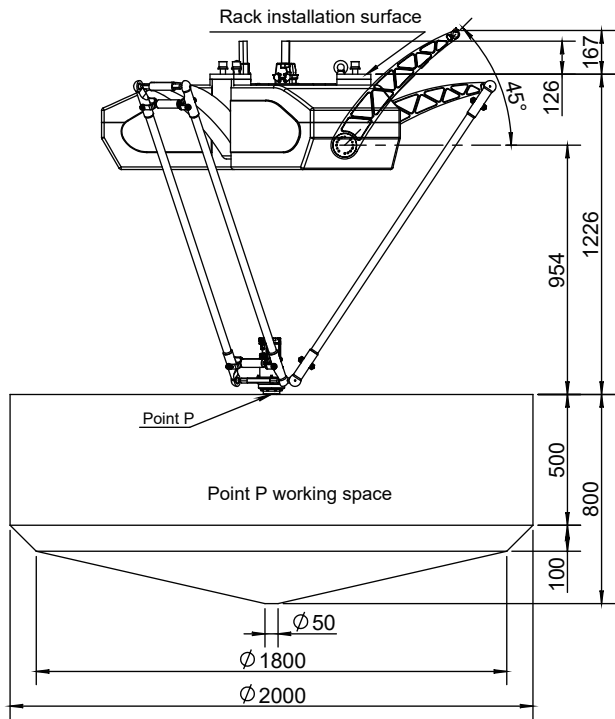


Specification

Bat2000M-S15		
Rated load		
15kg		
Working space diameter		
2000mm		
Number of axes		
4		
Repeat positioning accuracy		
±0.1mm		
Angular repeat positioning accuracy		
±0.05°		
25/305/25	0.1kg	0.39s
	1kg	\
	3kg	\
	6kg	0.47s
90/400/90	0.1kg	0.56s
	1kg	\
	6kg	0.6s
	15kg	0.7s
Power supply voltage		
Three-phase AC 380 V±10%, 50/60 Hz		
Rated power		
6.1KW		
Ambient temperature		
0-45°C		
Relative humidity		
5-95%		
Degree of protection		
IP54		
Safety		
Equipped with monitoring, emergency stop, and installation functions		
Radiation		
EMC shielding		
Installation method		
Hoisting		
Weight of the robot body		
220kg		
I/O interface		
4-channel configurable digital I/O 8-channel universal digital I/O (8 additional I/O channels can be added) 2-channel encoder input		
Ethernet		
2		
USB		
2		
RS232\RS485		
1		
EtherCAT		
1		
Communication protocol		
Modbus-RTU/TCP、Socket		
Certification		
CE		

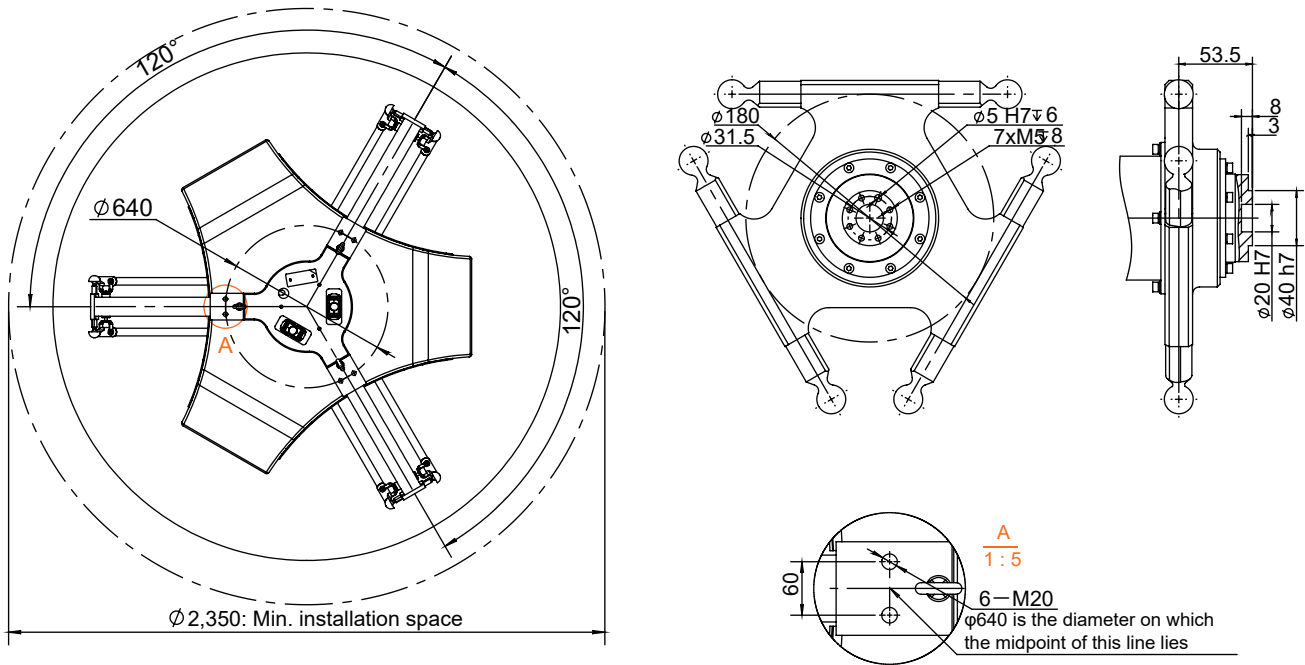
\*: For specific requirements regarding line selection, interface configuration, and other optional needs, please consult the technicians of RobotPhoenix.

Working range



Model	Bat2000M-S15
Distance from installation surface to top of equipment	126mm
Max. upper arm elevation and horizontal plane angle	45°
Max. elevation of the upper arm to the height of the installation surface	167mm
Distance from installation surface to upper plane of working space	1226mm
Distance from the reducer shaft center to the upper plane of the working space	954mm
Total height of the upper and lower limits of the working space	800mm
Height of the cylindrical part of the working space	500mm
Height of the conical frustum part of the working space	100mm
Transition diameter of the conical column in the working space	1800mm
Bottom diameter of the conical column in the working space	50mm
Diameter of the circular table part of the working space	2000mm
Min. installation size of the robot body	2350mm

Installation size



\*: Any changes resulting from upgrading our products will not be notified separately.



\*: Any changes resulting from upgrading our products will not be notified separately.

Bat-series Delta Robot

Bat1300N-S20

It features high speed and agility, high positioning accuracy, and strong power, facilitating high-speed and high-precision flexible production.

**Applicable industries**  
Sorting, handling, loading and unloading, boxing, gluing, and other links in electronics, food, medicine, daily chemicals, logistics, and new energy.

Product features

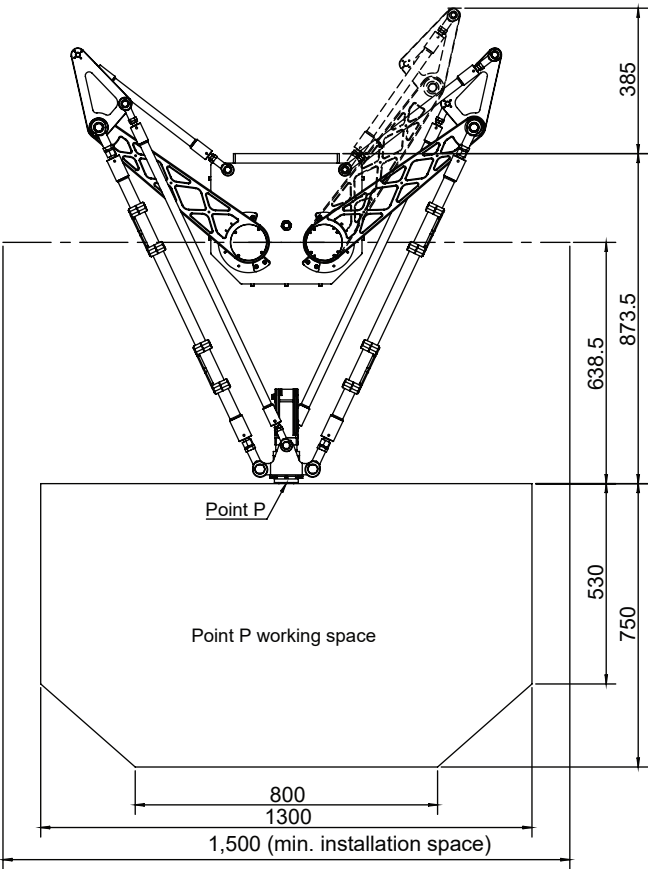
Rated load	20kg
Working space diameter	1300mm
Repeat positioning accuracy	±0.05mm
Configuration	Parallel 2+1 axis



Specification

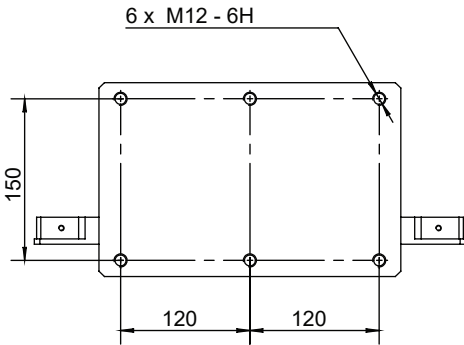
Bat1300N-S20		
Rated load		
20kg		
Working space diameter		
1300mm		
Number of axes		
3		
Repeat positioning accuracy		
±0.05mm		
Angular repeat positioning accuracy		
±0.05°		
25/305/25	0.1kg	0.40s
	1kg	\
	3kg	\
	6kg	0.48s
90/400/90	0.1kg	0.51s
	1kg	\
	6kg	0.59s
	15kg	0.7s
Power supply voltage		
Three-phase AC 380 V±10%, 50/60 Hz		
Rated power		
4.6KW		
Ambient temperature		
0-45°C		
Relative humidity		
5-95%		
Degree of protection		
IP54		
Safety		
Equipped with monitoring, emergency stop, and installation functions		
Radiation		
EMC shielding		
Installation method		
Hoisting		
Weight of the robot body		
0kg		
I/O interface		
4-channel configurable digital I/O 8-channel universal digital I/O (8 additional I/O channels can be added) 2-channel encoder input		
Ethernet		
2		
USB		
2		
RS232\RS485		
1		
EtherCAT		
1		
Communication protocol		
Modbus-RTU/TCP、Socket		

Working range

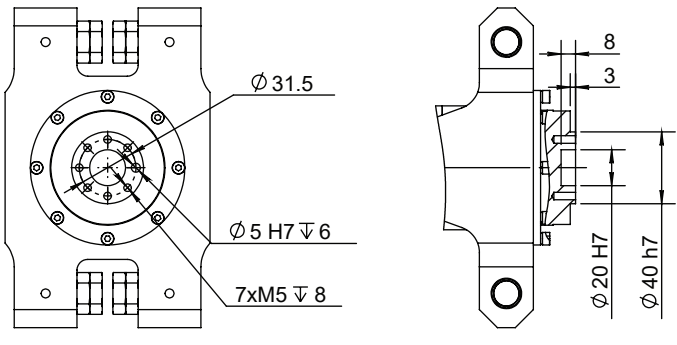


Model	Bat1300N-S20
Distance from installation surface to top of equipment	385mm
Distance from installation surface to upper plane of working space	873.5mm
Distance from the reducer shaft center to the upper plane of the working space	638.5mm
Total height of the upper and lower limits of the working space	750mm
Height of the conical frustum part of the working space	220mm
Bottom diameter of the conical column in the working space	800mm
Diameter of the circular table part of the working space	1300mm
Min. installation size of the robot body	1500mm

Installation size



Rack installation size



Installation size at point P

\*: For specific requirements regarding line selection, interface configuration, and other optional needs, please consult the technicians of RobotPhoenix.

\*: Any changes resulting from upgrading our products will not be notified separately.

Python-series SCARA Robot

Python450-B6

With superior speed, accuracy, linearity, and verticality performance, it can quickly and precisely complete tasks such as gluing, assembly, transfer, and packaging.

Applicable industries

Transportation and loading/unloading, dispensing, gluing, assembly and inspection processes in electronics, food, medicine, daily chemicals, and semiconductors.

Product features

Rated load	3kg
Max. load	6kg
Number of axes	4
Installation type	Table-mounted



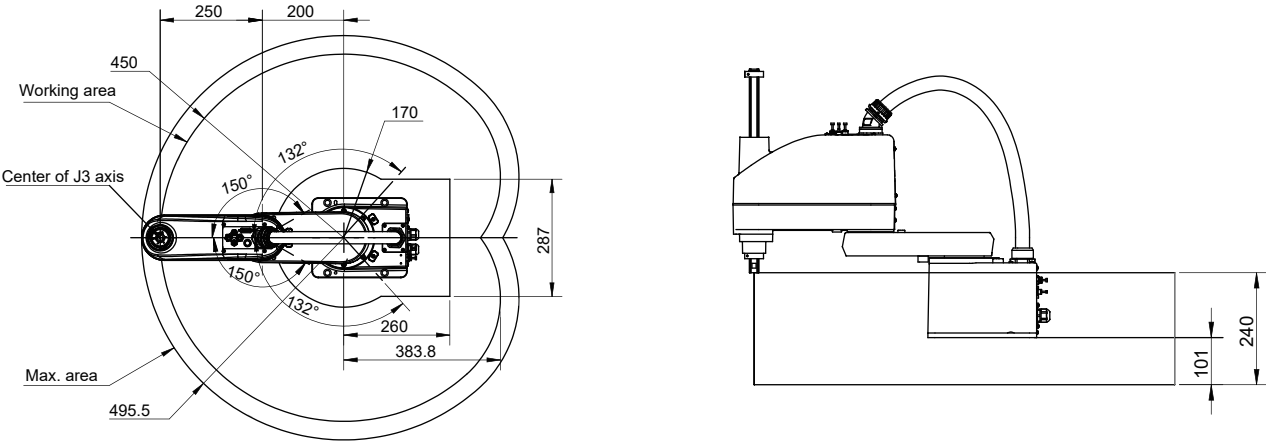
Specification

Python450-B6		
Robotic arm length	Robotic arms 1 & 2	450mm
	Robotic arm 1	200mm
	Robotic arm 2	250mm
Max. operating speed	Joints 1 & 2	6600mm/s
	Joint 3	1100mm/s
	Joint 4	2360°/s
Repetitive positioning accuracy	Joints 1 & 2	±0.02mm
	Joint 3	±0.01mm
	Joint 4	±0.01°
Joint 4 allowable inertial torque	Rated	0.01kg·m <sup>2</sup>
	Max.	0.12kg·m <sup>2</sup>
Working range	Joint 1	±132°
	Joint 2	±150°
	Joint 3	240mm
	Joint 4	±360°
25/305/25	0.1kg	0.38s
	1kg	0.38s
	3kg	0.39s
Power supply voltage		Single-phase AC 220 V-240 V, 50/60 Hz
Rated power		1.3KW
Ambient temperature		0-45°C
Relative humidity		5-95%
Degree of protection		IP54
Installation aperture		172x140mm; 4-φ12
Electrical interface		15-channel custom I/O
Airway		φ6*2+φ4*2
Weight		24 kg (excluding cables)
I/O interface		4-channel configurable digital I/O 8-channel universal digital I/O (8 additional I/O channels can be added) 2-channel encoder input
Ethernet		2
USB		2
RS232\RS485		1
EtherCAT		1
Communication protocol		Modbus-RTU/TCP、Socket

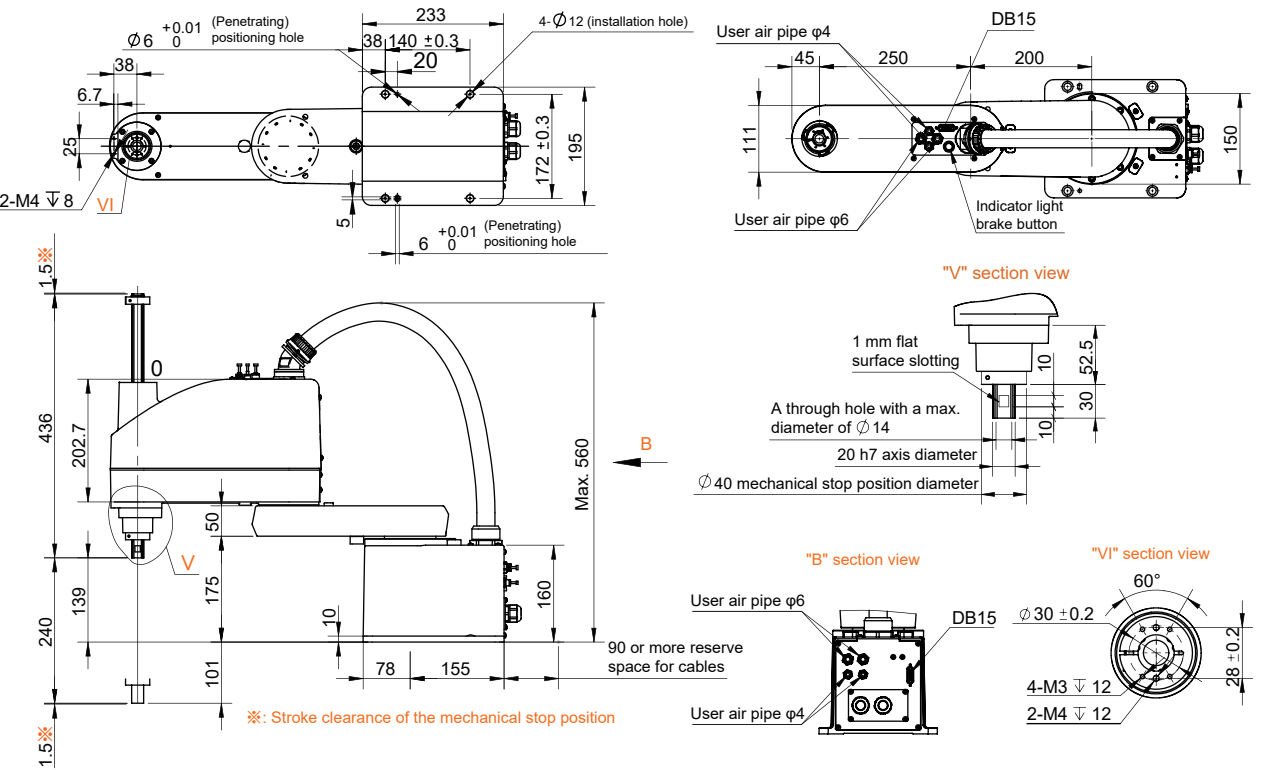
\*: For specific requirements regarding line selection, interface configuration, and other optional needs, please consult the technicians of Robotphoenix.



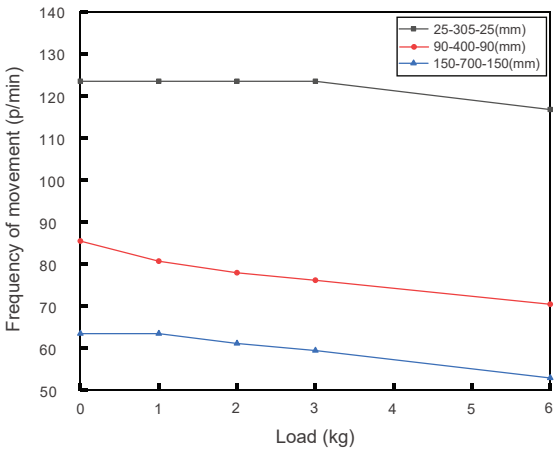
Working range (unit: mm)



Installation size (unit: mm)



Load - Frequency



Moving trajectory					
Cyclic mode	P1 → P2 → P3 → P4 → P3 → P2 → P1				
h (mm )	25	90	100	150	200
b (mm )	305	400	500	700	900

\*: Any changes resulting from upgrading our products will not be notified separately.



Python-series SCARA Robot

Python550-B6

With superior speed, accuracy, linearity, and verticality performance, it can quickly and precisely complete tasks such as gluing, assembly, transfer, and packaging.

Applicable industries  
Transportation and loading/unloading, dispensing, gluing, assembly and inspection processes in electronics, food, medicine, daily chemicals, and semiconductors.

Product features	
Rated load	3kg
Max. load	6kg
Number of axes	4
Installation type	Floor-mounted

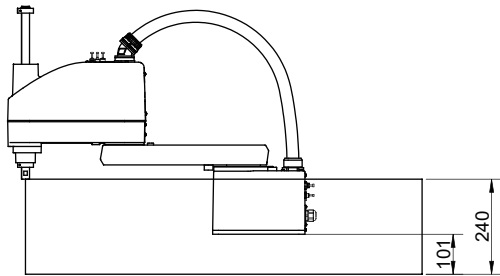
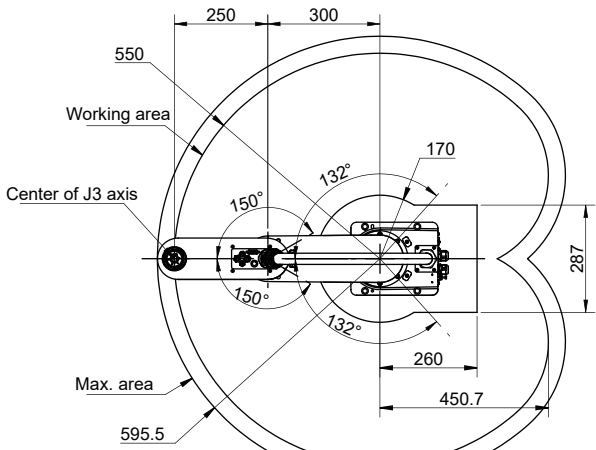


Specification

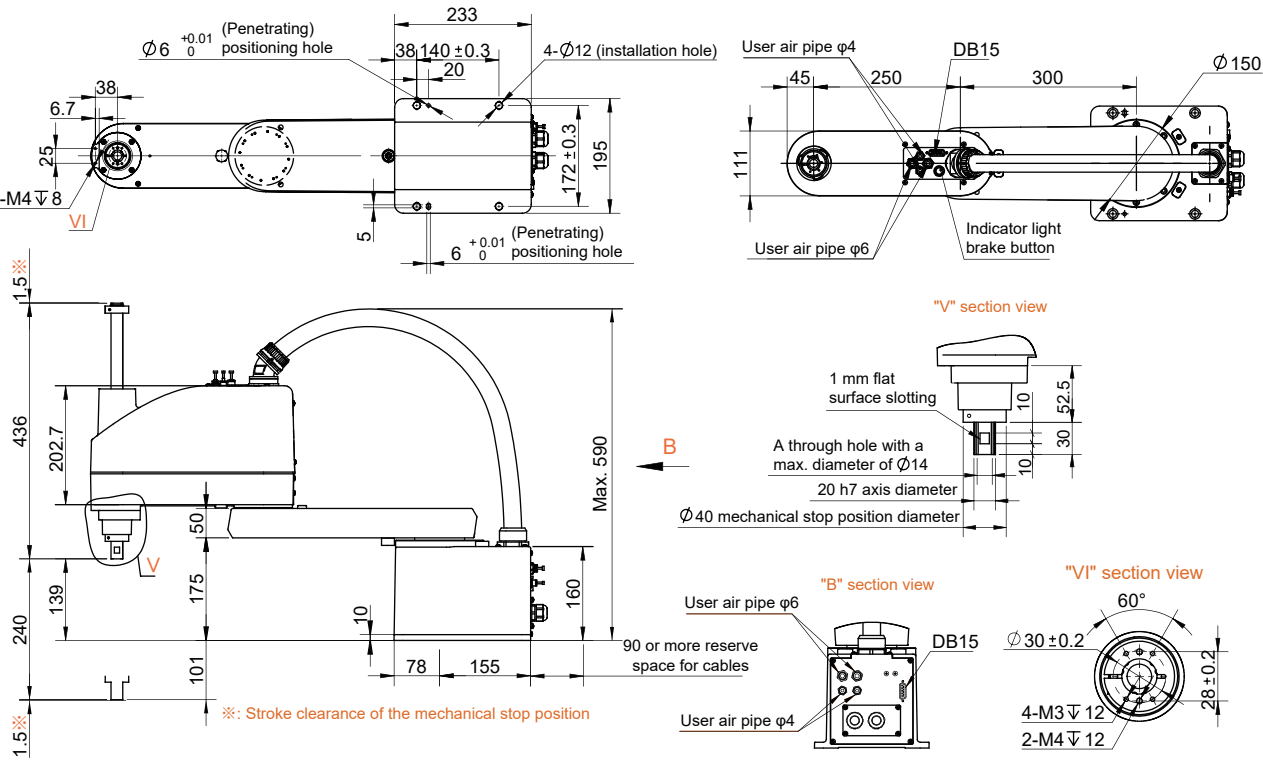
Python550-B6		
Robotic arm length	Robotic arms 1 & 2	550mm
	Robotic arm 1	300mm
	Robotic arm 2	250mm
Max. operating speed	Joints 1 & 2	7400mm/s
	Joint 3	1100mm/s
	Joint 4	2360°/s
Repeat positioning accuracy	Joints 1 & 2	±0.02mm
	Joint 3	±0.01mm
	Joint 4	±0.01°
Joint 4 allowable inertial torque	Rated	0.01kg·m <sup>2</sup>
	Max.	0.12kg·m <sup>2</sup>
Working range	Joint 1	±132°
	Joint 2	±150°
	Joint 3	240mm
	Joint 4	±360°
25/305/25	0.1kg	0.36s
	1kg	0.36s
	3kg	0.37s
Power supply voltage		Single-phase AC 220 V-240 V, 50/60 Hz
Rated power		1.3KW
Ambient temperature		0-45°C
Relative humidity		5-95%
Degree of protection		IP54
Installation aperture		172x140mm; 4-φ12
Electrical interface		15-channel custom I/O
Airway		φ6*2+φ4*2
Weight		25 kg (excluding cables)
I/O interface		4-channel configurable digital I/O 8-channel universal digital I/O (8 additional I/O channels can be added) 2-channel encoder input
Ethernet		2
USB		2
RS232\RS485		1
EtherCAT		1
Communication protocol		Modbus-RTU/TCP、Socket
Certification		CE

\*: For specific requirements regarding line selection, interface configuration, and other optional needs, please consult the technicians of RobotPhoenix.

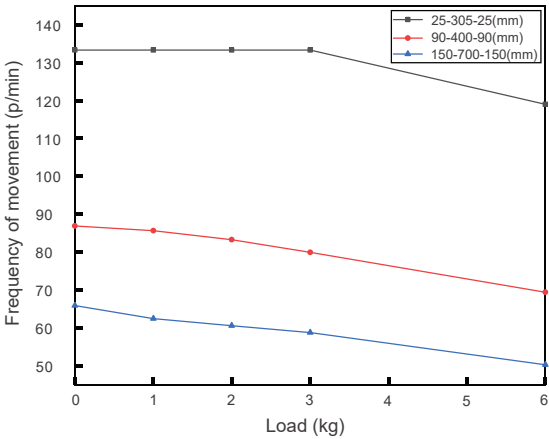
Working range (unit: mm)



Installation size (unit: mm)



Load - Frequency



Moving trajectory					
Cyclic mode	P1 → P2 → P3 → P4 → P3 → P2 → P1				
h (mm)	25	90	100	150	200
b (mm)	305	400	500	700	900

\*: Any changes resulting from upgrading our products will not be notified separately.

# Python650-B6

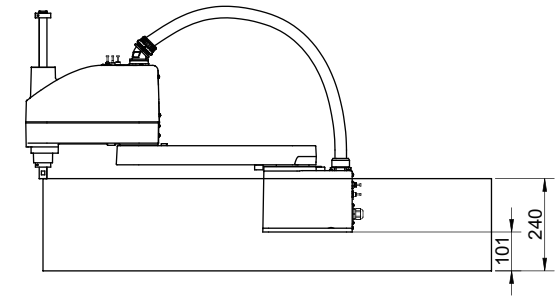
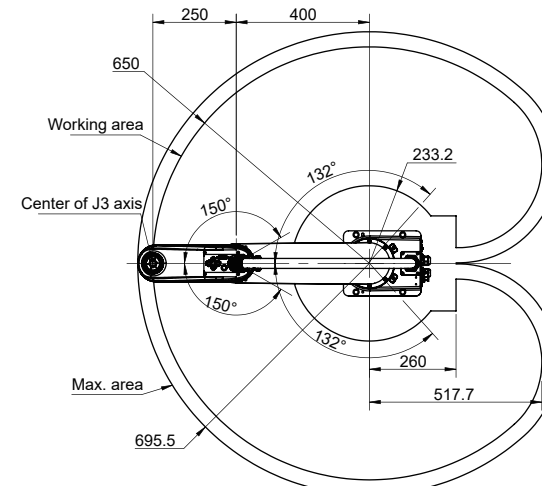
### Applicable industries

## Product features

## Python650-B6

Robotic arm length	Robotic arms 1 & 2	650mm
	Robotic arm 1	400mm
	Robotic arm 2	250mm
	Joints 1 & 2	8200mm/s
Max. operating speed	Joint 3	1100mm/s
	Joint 4	2360°/s
	Joints 1 & 2	±0.02mm
Repeat positioning accuracy	Joint 3	±0.01mm
	Joint 4	±0.01°
	Rated	0.01kg·m <sup>2</sup>
Joint 4 allowable inertial torque	Max.	0.12kg·m <sup>2</sup>
	Joint 1	±132°
Working range	Joint 2	±150°
	Joint 3	240mm
	Joint 4	±360°
	0.1kg	0.37s
25/305/25	1kg	0.37s
	3kg	0.39s
Power supply voltage	Single-phase AC 220 V-240 V, 50/60 Hz	
Rated power	1.3KW	
Ambient temperature	0-45°C	
Relative humidity	5-95%	
Degree of protection	IP54	
Installation aperture	172x140mm; 4-φ12	
Electrical interface	15-channel custom I/O	
Airway	φ6*2+φ4*2	
Weight	26 kg (excluding cables)	
I/O interface	4-channel configurable digital I/O 8-channel universal digital I/O (8 additional I/O channels can be added) 2-channel encoder input	
Ethernet	2	
USB	2	
RS232\RS485	1	
EtherCAT	1	
Communication protocol	Modbus-RTU/TCP、Socket	

**Working range** (unit: mm)



Technical drawings of the DB15 indicator light brake button, showing dimensions and features:

- Top View:** Shows the overall dimensions of the button. Key features include:
  - 2-M4  $\nabla$  8 mounting holes.
  - $\phi 6$   $^{+0.01}_0$  (Penetrating) positioning hole.
  - 38, 140  $\pm 0.3$ , 20, 233, 4- $\phi 12$  (installation hole), 172  $\pm 0.3$ , 195, 5, 6  $^{+0.01}_0$  (Penetrating) positioning hole.
  - VI section line.
- Front View:** Shows the button's profile with dimensions:
  - 1.5  $\times$ , 436, 202.7, 240, 139, 175, 101, 10, 78, 155, 160, Max. 615.
  - V section line.
- Side View:** Shows the button's side profile with dimensions:
  - 1.5  $\times$ , 436, 202.7, 240, 139, 175, 101, 10, 78, 155, 160, Max. 615.
  - Stroke clearance of the mechanical stop position  $\times$ .
- "V" section view:** Shows the internal mechanism with dimensions:
  - 1 mm flat surface slotting.
  - Max. diameter is  $\phi 14$ .
  - $\phi 20$  h7 axis diameter.
  - $\phi 40$  mechanical stop position diameter.
  - 111, 45, 250, 400, 150, 10, 30, 52.5, 10, 10.
- "B" section view:** Shows the button's base with dimensions:
  - User air pipe  $\phi 6$ .
  - DB15.
  - 90 or more reserve space for cables.
  - User air pipe  $\phi 4$ .
- "VI" section view:** Shows the button's top view with dimensions:
  - $\phi 30 \pm 0.2$ .
  - 60°.
  - 28  $\pm 0.2$ .
  - 4-M3  $\nabla$  12.
  - 2-M4  $\nabla$  12.

Load (kg)	25-305-25(mm) (p/min)	90-400-90(mm) (p/min)	150-700-150(mm) (p/min)
0	160	86	63
1	160	84	63
2	158	81	61
3	147	78	60
4	138	75	57
5	130	72	54

\*: Any changes resulting from upgrading our products will not be notified separately.

Python-series SCARA Robot

Python800-B20

With superior speed, accuracy, linearity, and verticality performance, it can quickly and precisely complete tasks such as gluing, assembly, transfer, and packaging.

Applicable industries  
Transportation and loading/unloading, dispensing, gluing, assembly and inspection processes in electronics, food, medicine, daily chemicals, and semiconductors.

Product features

Rated load	10kg
Max. load	20kg
Number of axes	4
Installation type	Floor-mounted

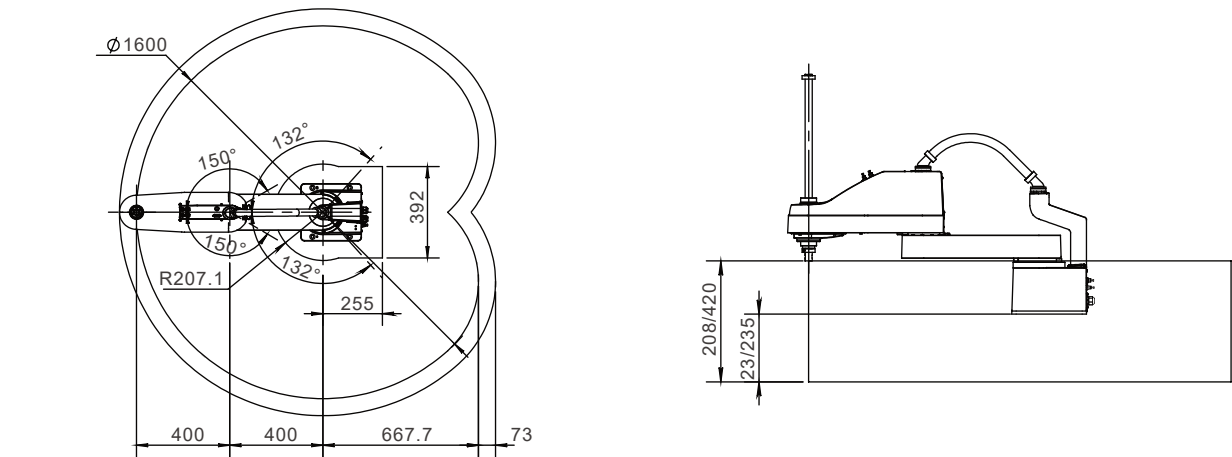


Specification

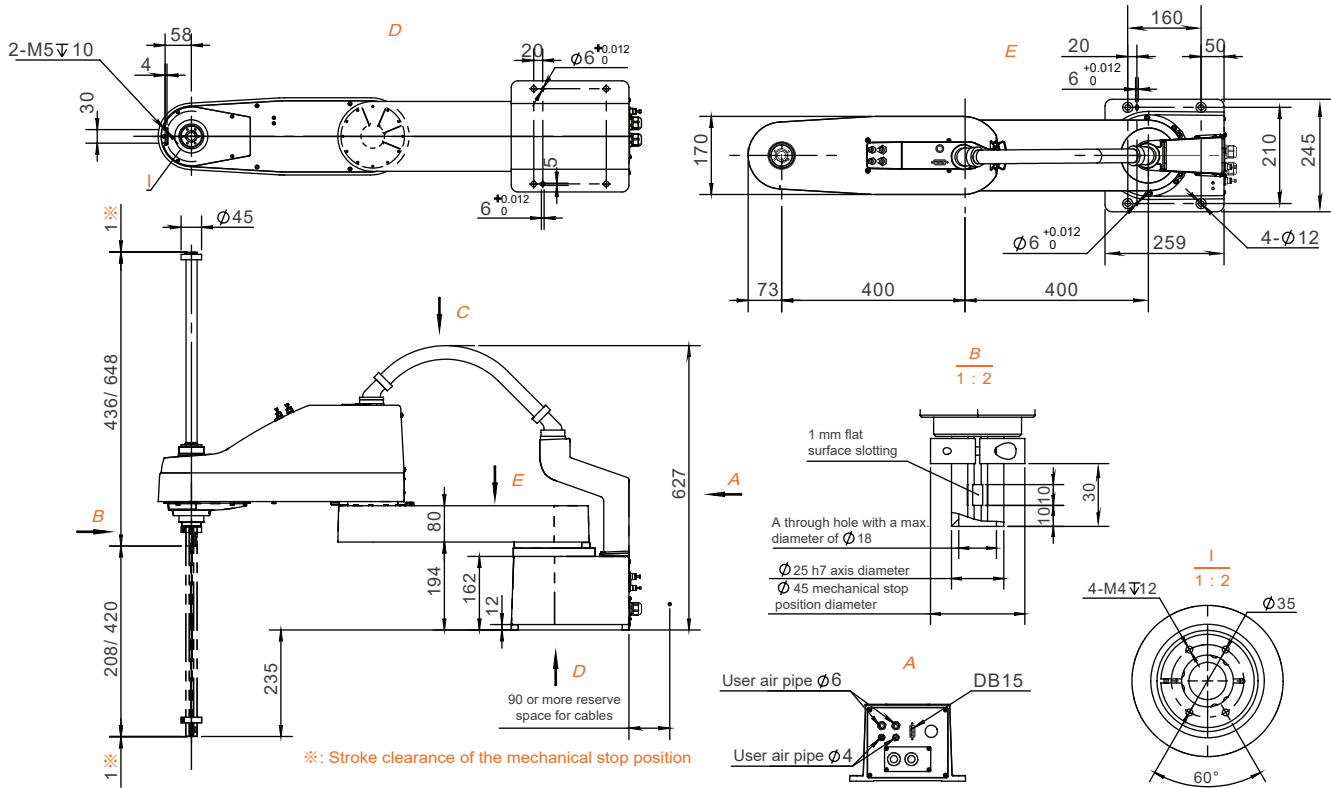
Python800-B20		
Robotic arm length	Robotic arms 1 & 2	800mm
	Robotic arm 1	400mm
	Robotic arm 2	400mm
Max. operating speed	Joints 1 & 2	8830mm/s
	Joint 3	1600mm/s
	Joint 4	1600°/s
Repeat positioning accuracy	Joints 1 & 2	±0.025mm
	Joint 3	±0.01mm
	Joint 4	±0.01°
Joint 4 allowable inertial torque	Rated	0.02kg·m <sup>2</sup>
	Max.	0.3kg·m <sup>2</sup>
Working range	Joint 1	±132°
	Joint 2	±150°
	Joint 3	208/420mm
	Joint 4	±360°
25/305/25	0.1kg	0.41s
	1kg	0.43s
	3kg	0.46s
Power supply voltage	Single-phase AC 220 V-240 V, 50/60 Hz	
Rated power	2.4kW	
Ambient temperature	0-45°C	
Relative humidity	5-95%	
Installation aperture	160x210mm; 4-φ12	
Electrical interface	15-channel custom I/O	
Airway	φ6*2+φ4*2	
Weight	40 kg (excluding cables)	
I/O interface	4-channel configurable digital I/O 8-channel universal digital I/O (8 additional I/O channels can be added) 2-channel encoder input	
Ethernet	2	
USB	2	
RS232/RS485	1	
EtherCAT	1	
Communication protocol	Modbus-RTU/TCP、Socket	

\*: For specific requirements regarding line selection, interface configuration, and other optional needs, please consult the technicians of RobotPhoenix.

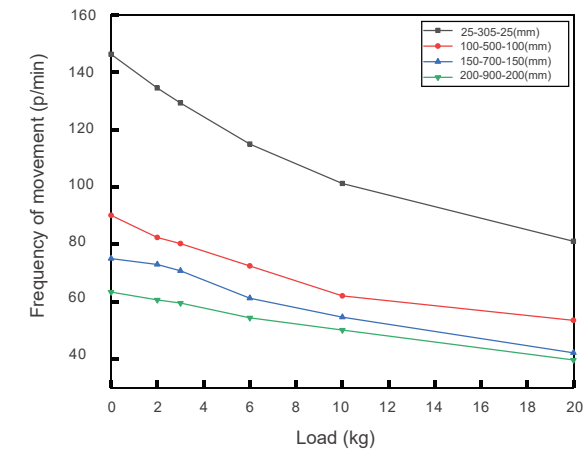
Working range (unit: mm)



Installation size (unit: mm)



Load - Frequency



Moving trajectory					
Cyclic mode	P1 → P2 → P3 → P4 → P3 → P2 → P1				
h (mm)	25	90	100	150	200
b (mm)	305	400	500	700	900

\*: Any changes resulting from upgrading our products will not be notified separately.



Python-series SCARA Robot

Python550F-B6

With superior speed, accuracy, linearity, and verticality performance, it can quickly and precisely complete tasks such as gluing, assembly, transfer, and packaging.

Applicable industries  
Transportation and loading/unloading, dispensing, gluing, assembly and inspection processes in electronics, food, medicine, daily chemicals, and semiconductors.

Product features	
Rated load	3kg
Max. load	6kg
Number of axes	4
Installation type	Hoisting



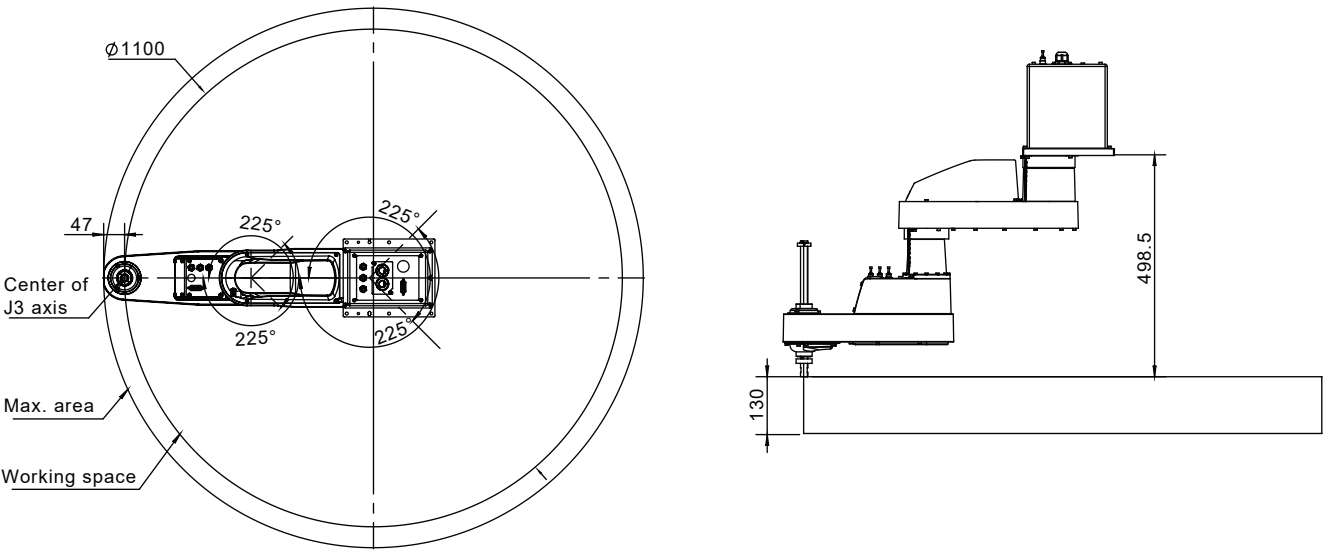
Specification

Python550F-B6		
Robotic arm length	Robotic arms 1 & 2	550mm
	Robotic arm 1	275mm
	Robotic arm 2	275mm
Max. operating speed	Joints 1 & 2	7400mm/s
	Joint 3	1100mm/s
	Joint 4	2600°/s
	Joints 1 & 2	±0.02mm
Repeat positioning accuracy	Joint 3	±0.01mm
	Joint 4	±0.01°
Joint 4 allowable inertial torque	Rated	0.005kg·m <sup>2</sup>
	Max.	0.05kg·m <sup>2</sup>
Working range	Joint 1	±225°
	Joint 2	±225°
	Joint 3	130mm
	Joint 4	±720°
25/305/25	0.1kg	/
	3kg	0.5s
	6kg	0.52s
Power supply voltage	Single-phase AC 220 V-240 V, 50/60 Hz	
Rated power	1.3KW	
Ambient temperature	0-45°C	
Relative humidity	5-95%	
Degree of protection	IP54	
Installation aperture	190x160mm; 6-φ6.5	
Electrical interface	10-channel custom I/O	
Airway	φ4*3	
Weight	20 kg (excluding cables and racks)	
I/O interface	4-channel configurable digital I/O 8-channel universal digital I/O (8 additional I/O channels can be added) 2-channel encoder input	
Ethernet	1	
USB	2	
RS232\RS485	1	
Communication protocol	Modbus-RTU/TCP、Socket	

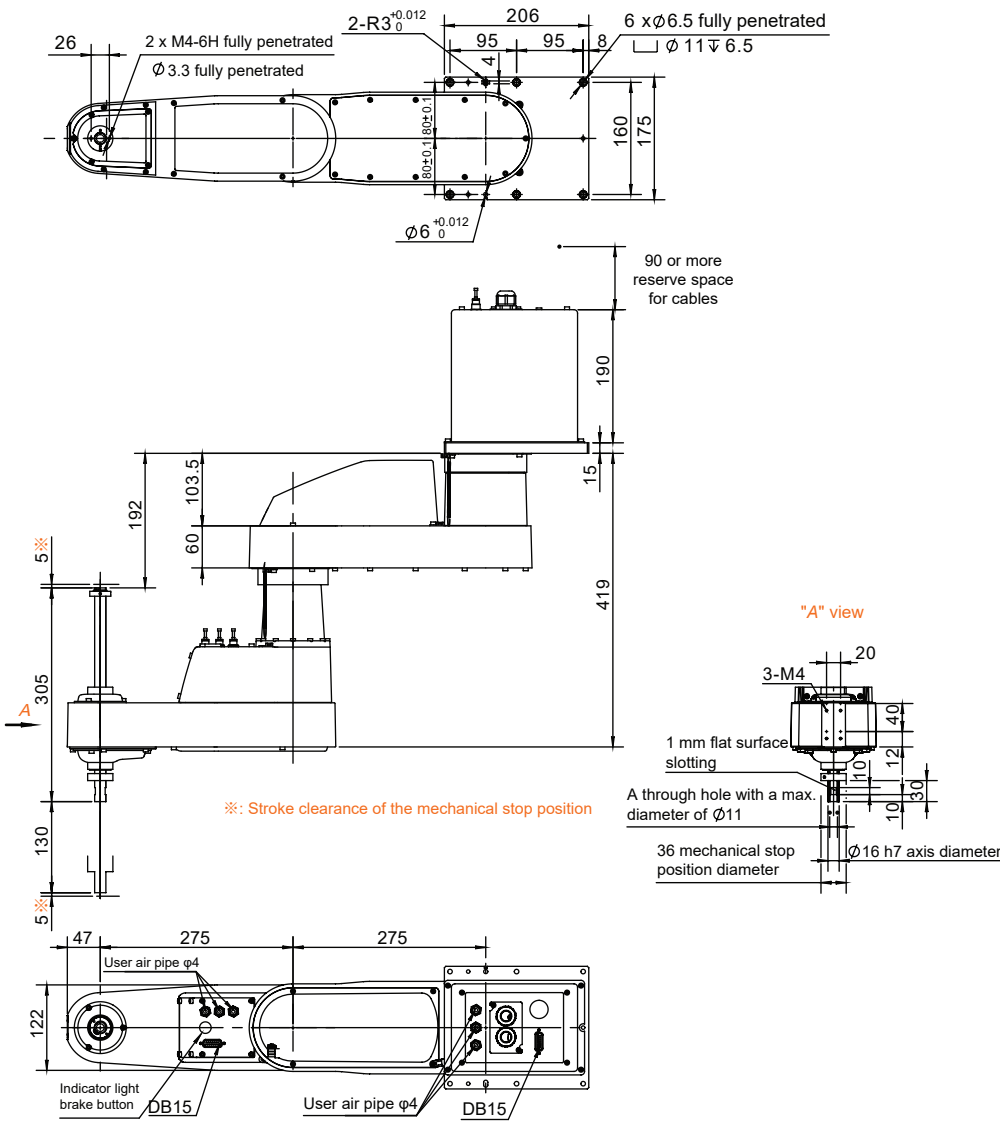
\*: For specific requirements regarding line selection, interface configuration, and other optional needs, please consult the technicians of RobotPhoenix.



Working range (unit: mm)



Installation size (unit: mm)



\*: Any changes resulting from upgrading our products will not be notified separately.

# Python450-T6

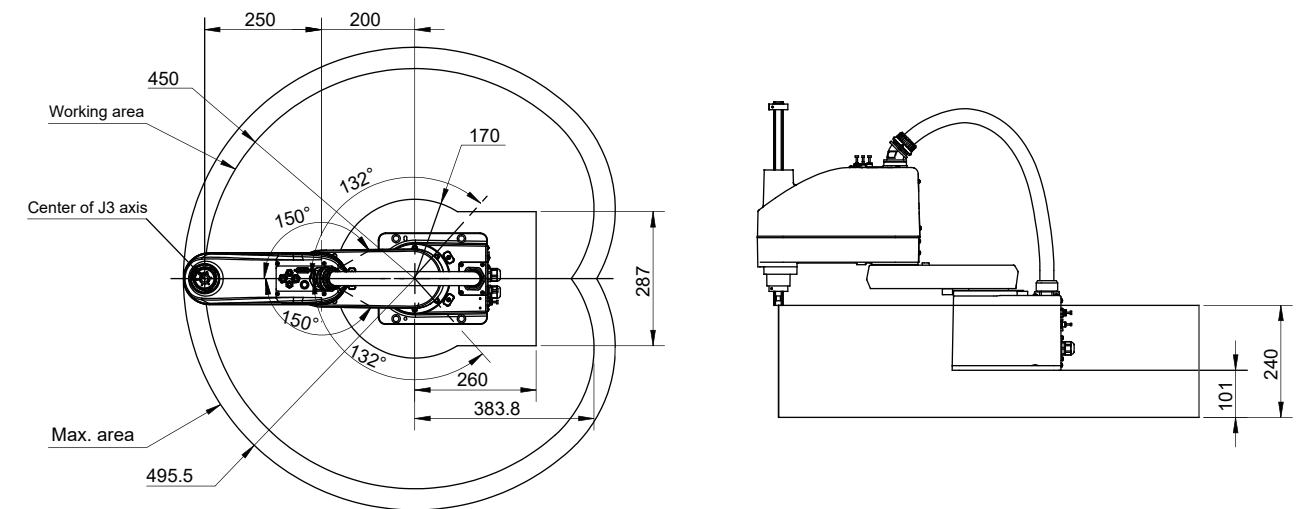
Rated load	3kg
Max. load	6kg
Number of axes	4
Installation type	Floor-mounted



## Python450-T6

Robotic arm length	Robotic arms 1 & 2	450mm
	Robotic arm 1	200mm
	Robotic arm 2	250mm
Max. operating speed	Joints 1 & 2	6600mm/s
	Joint 3	1100mm/s
	Joint 4	2360°/s
Repeat positioning accuracy	Joints 1 & 2	±0.02mm
	Joint 3	±0.01mm
	Joint 4	±0.01°
Joint 4 allowable inertial torque	Rated	0.01kg·m <sup>2</sup>
	Max.	0.12kg·m <sup>2</sup>
Working range	Joint 1	±132°
	Joint 2	±150°
	Joint 3	240mm
	Joint 4	±360°
25/300/25	2kg	0.38s
Load	Rated	3kg
	Max.	6kg
Power supply voltage		Single-phase AC 220 V±10%, 50/60 Hz
Rated power		0.85KW
Ambient temperature		0-45°C
Relative humidity		5-95%
Degree of protection		IP54
Installation aperture		172x140mm; 4-φ12
Electrical interface		15-channel custom I/O
Airway		φ6*2+φ4*2
Weight		24 kg (excluding cables)
I/O interface		System I/O: 8 channels input, 8 channels output User I/O: 24 channels input, 12 channels output External encoder: 4 channels
Ethernet		1
USB		2
RS232\RS485		1
Communication protocol		Modbus-RTU/TCP、Socket

**Working range** (unit: mm)



The technical drawings include the following views and dimensions:

- Top View:** Shows the overall footprint with dimensions 233mm (width) and 195mm (depth). It includes 4-Ø12 installation holes, a 2-M4 mounting hole, and a 2-M4 mounting hole. A penetrating positioning hole is also indicated.
- Front View:** Shows the main body with a maximum height of 560mm. It includes a 1mm flat surface slotting detail and a 1mm flat surface slotting detail. A through hole with a maximum diameter of Ø14 is shown. A 20 h7 axis diameter and a Ø40 mechanical stop position diameter are also indicated.
- Side View:** Shows the side profile with dimensions 436mm (height), 202.7mm (width), 139mm (height), 175mm (height), 101mm (height), 78mm (width), 155mm (width), and 160mm (height). It includes a 90 or more reserve space for cables.
- Bottom View:** Shows the base with dimensions 250mm (width), 200mm (width), 150mm (height), 111mm (height), 45mm (width), and 200mm (width). It includes a 1mm flat surface slotting detail and a 1mm flat surface slotting detail.
- Section Views:**
  - "V" section view:** Shows the internal components, including the DB15 terminal block, indicator light, and brake button.
  - "B" section view:** Shows the side profile with dimensions 436mm (height), 202.7mm (width), 139mm (height), 175mm (height), 101mm (height), 78mm (width), 155mm (width), and 160mm (height).
  - "VI" section view:** Shows the front view with dimensions 250mm (width), 200mm (width), 150mm (height), 111mm (height), 45mm (width), and 200mm (width).

\*: Any changes resulting from upgrading our products will not be notified separately.

Python-series SCARA Robot

Python550-T6

With superior speed, accuracy, linearity, and verticality performance, it can quickly and precisely complete tasks such as gluing, assembly, transfer, and packaging.

**Applicable industries**  
Transportation and loading/unloading, dispensing, gluing, assembly and inspection processes in electronics, food, medicine, daily chemicals, and semiconductors.

Product features	
Rated load	3kg
Max. load	6kg
Number of axes	4
Installation type	Floor-mounted

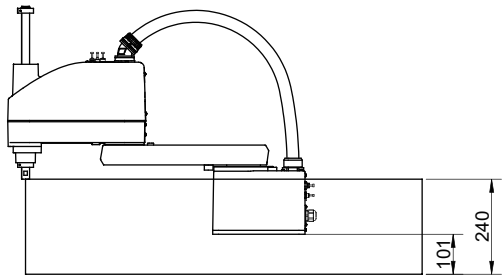
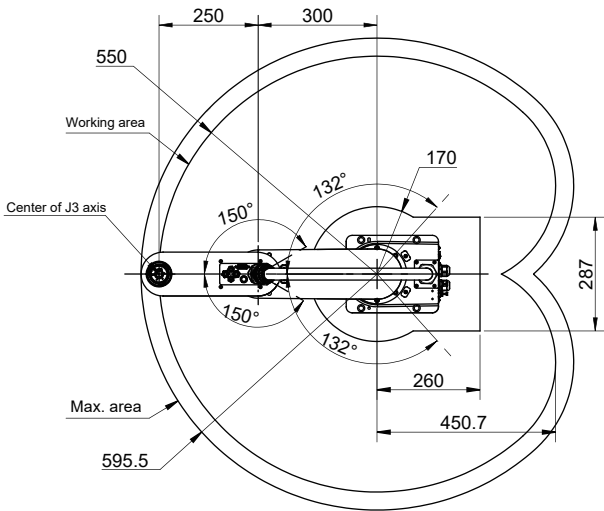


Specification

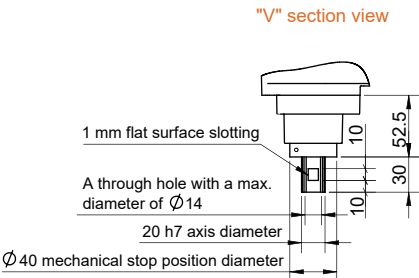
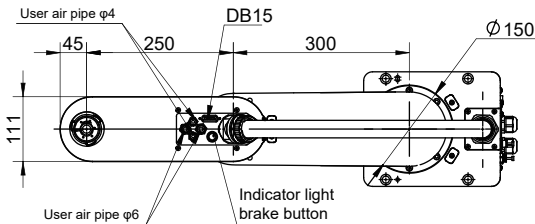
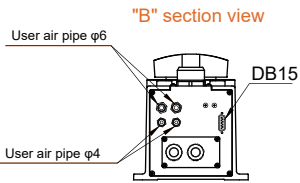
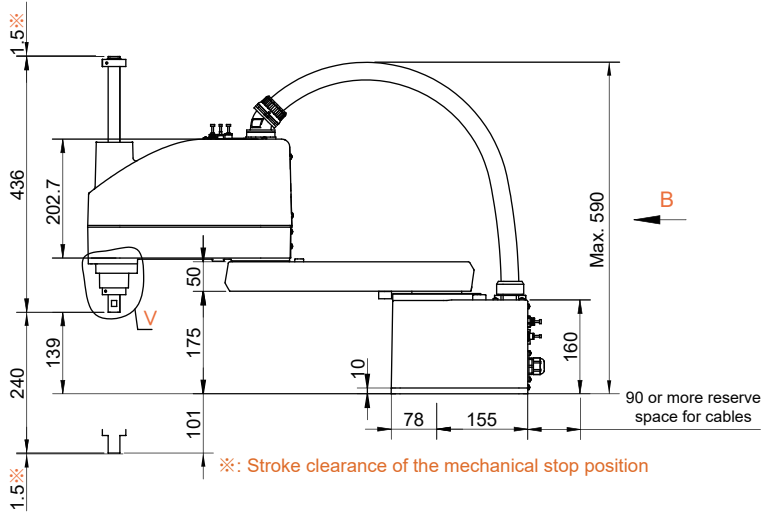
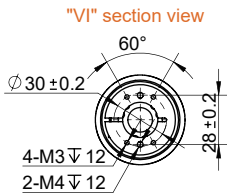
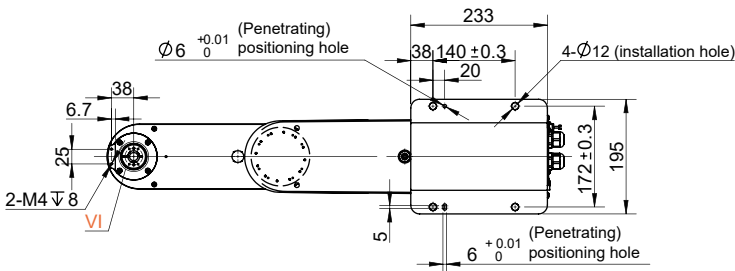
Python550-T6		
Robotic arm length	Robotic arms 1 & 2	550mm
	Robotic arm 1	300mm
	Robotic arm 2	250mm
Max. operating speed	Joints 1 & 2	6600mm/s
	Joint 3	1100mm/s
	Joint 4	2360°/s
Repeat positioning accuracy	Joints 1 & 2	±0.02mm
	Joint 3	±0.01mm
	Joint 4	±0.01°
Joint 4 allowable inertial torque	Rated	0.01kg·m²
	Max.	0.12kg·m²
Working range	Joint 1	±132°
	Joint 2	±150°
	Joint 3	240mm
	Joint 4	±360°
25/300/25	2kg	0.39s
	Rated	3kg
Load	Rated	3kg
	Max.	6kg
Power supply voltage		Single-phase AC 220 V-240 V, 50/60 Hz
Rated power		0.85KW
Ambient temperature		0-45°C
Relative humidity		5-95%
Degree of protection		IP54
Installation aperture		172x140mm; 4-φ12
Electrical interface		15-channel custom I/O
Airway		φ6*2+φ4*2
Weight		25 kg (excluding cables)
I/O interface		System I/O: 8 channels input, 8 channels output User I/O: 24 channels input, 12 channels output External encoder: 4 channels
Ethernet		1
USB		2
RS232\RS485		1
Communication protocol		Modbus-RTU/TCP、Socket

\*: For specific requirements regarding line selection, interface configuration, and other optional needs, please consult the technicians of RobotPhoenix.

Working range (unit: mm)



Installation size (unit: mm)



\*: Any changes resulting from upgrading our products will not be notified separately.



Python-series SCARA Robot

Python650-T6

With superior speed, accuracy, linearity, and verticality performance, it can quickly and precisely complete tasks such as gluing, assembly, transfer, and packaging.

Applicable industries

Transportation and loading/unloading, dispensing, gluing, assembly and inspection processes in electronics, food, medicine, daily chemicals, and semiconductors.

Product features

Rated load	3kg
Max. load	6kg
Number of axes	4
Installation type	Floor-mounted



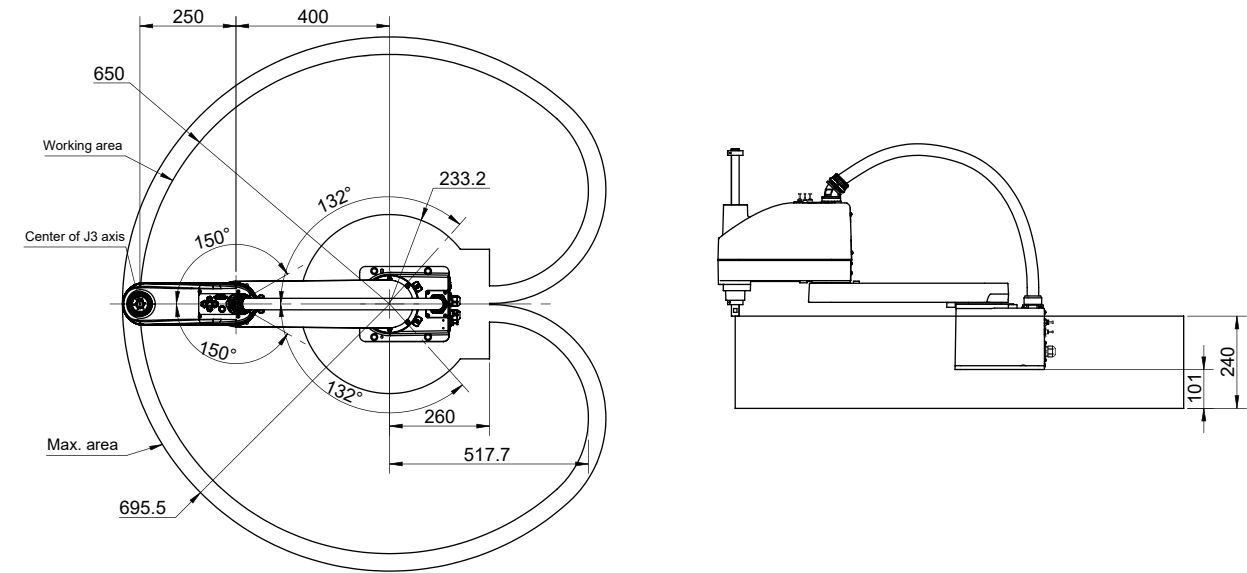
Specification

Python650-T6

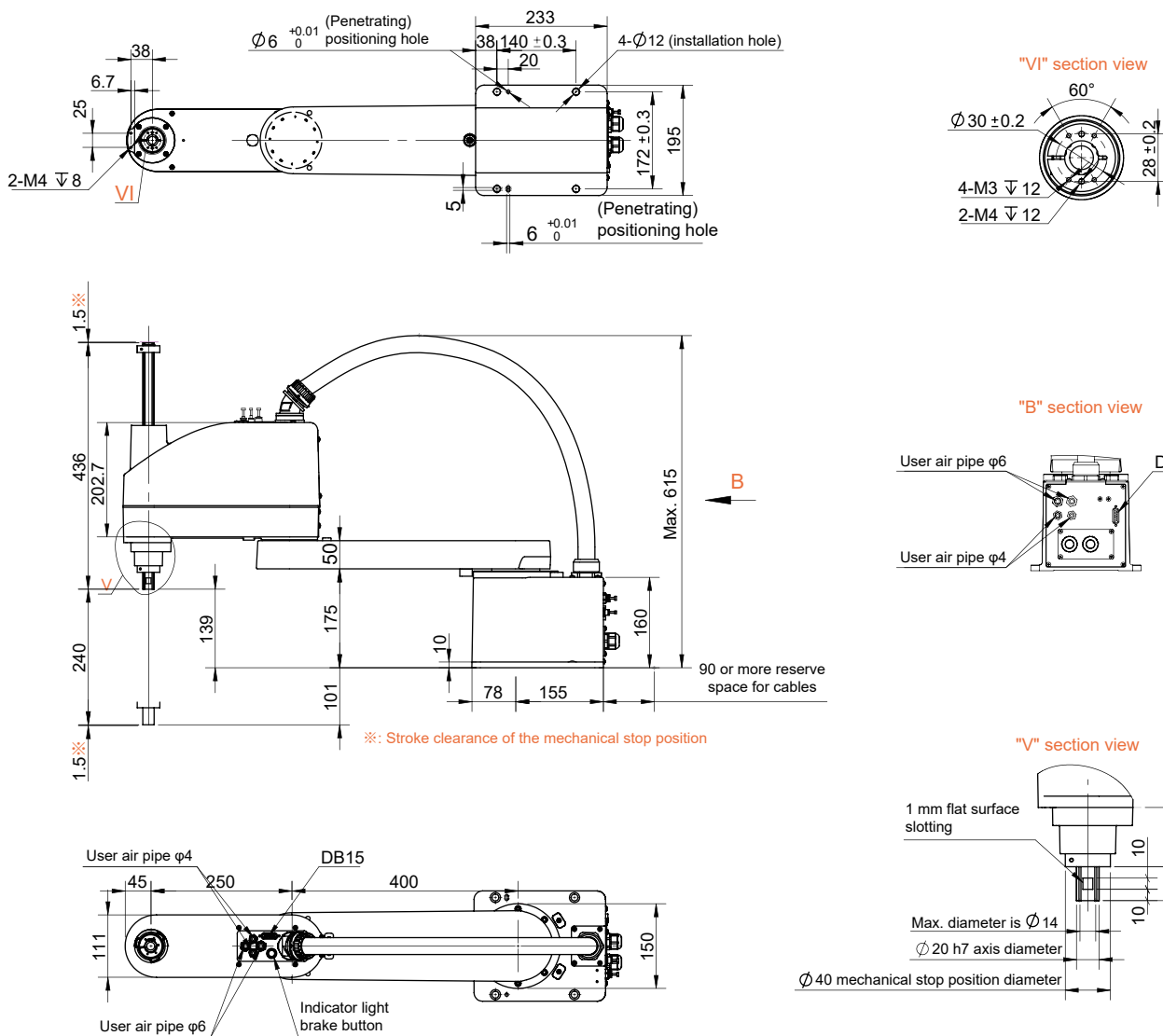
Robotic arm length	Robotic arms 1 & 2	650mm
	Robotic arm 1	400mm
	Robotic arm 2	250mm
Max. operating speed	Joints 1 & 2	8200mm/s
	Joint 3	1100mm/s
	Joint 4	2360°/s
Repeat positioning accuracy	Joints 1 & 2	±0.02mm
	Joint 3	±0.01mm
	Joint 4	±0.01°
Joint 4 allowable inertial torque	Rated	0.01kg·m <sup>2</sup>
	Max.	0.12kg·m <sup>2</sup>
Working range	Joint 1	±132°
	Joint 2	±150°
	Joint 3	240mm
	Joint 4	±360°
25/300/25	2kg	0.4s
	Rated	3kg
Load	Max.	6kg
Power supply voltage	Single-phase AC 220 V±10%, 50/60 Hz	
Rated power	1.3KW	
Ambient temperature	0-45°C	
Relative humidity	5-95%	
Degree of protection	IP54	
Installation aperture	172x140mm; 4-φ12	
Electrical interface	15-channel custom I/O	
Airway	φ6*2+φ4*2	
Weight	26 kg (excluding cables)	
I/O interface	System I/O: 8 channels input, 8 channels output User I/O: 24 channels input, 12 channels output External encoder: 4 channels	
Ethernet	1	
USB	2	
RS232/RS485	1	
Communication protocol	Modbus-RTU/TCP、Socket	

\*: For specific requirements regarding line selection, interface configuration, and other optional needs, please consult the technicians of RobotPhoenix.

Working range (unit: mm)



Installation size (unit: mm)



\*: Any changes resulting from upgrading our products will not be notified separately.

Python-series SCARA Robot

Python800-T20

With superior speed, accuracy, linearity, and verticality performance, it can quickly and precisely complete tasks such as gluing, assembly, transfer, and packaging.

**Applicable industries**  
Transportation and loading/unloading, dispensing, gluing, assembly and inspection processes in electronics, food, medicine, daily chemicals, and semiconductors.

Product features	
Rated load	10kg
Max. load	20kg
Number of axes	4
Installation type	Floor-mounted

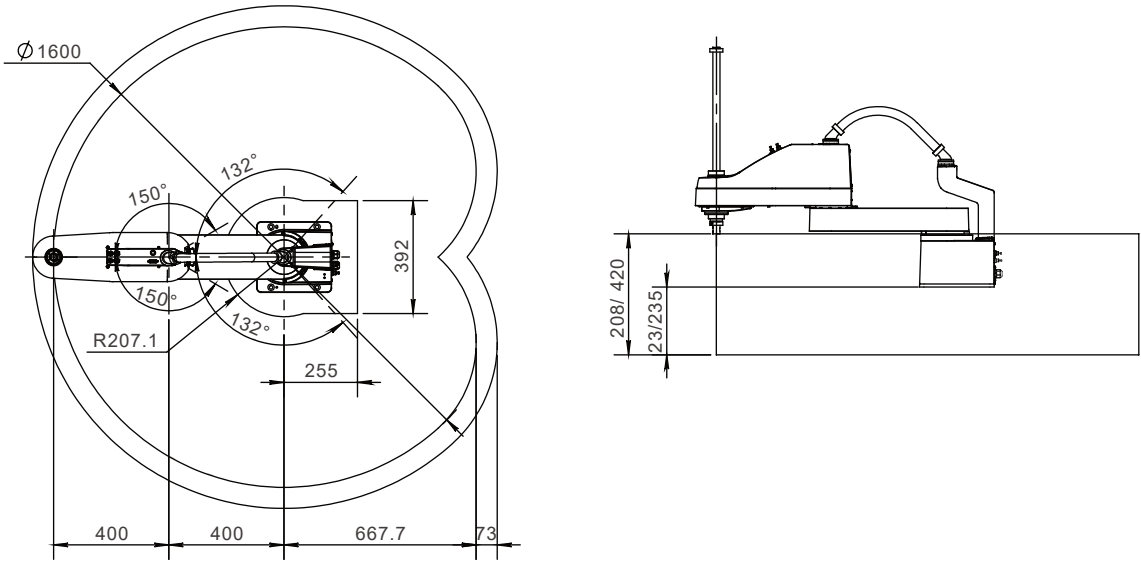


Specification

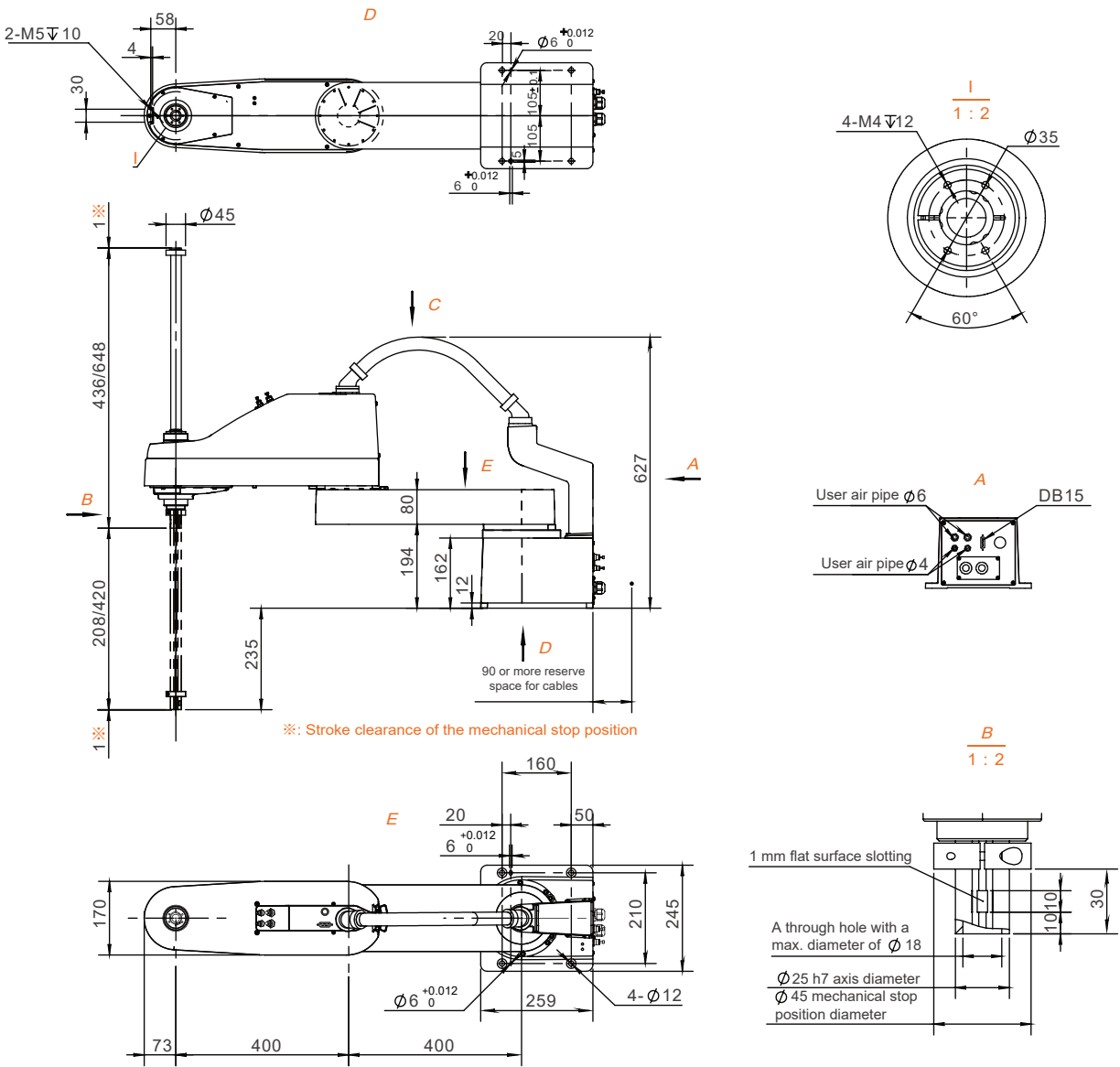
Python800-T20		
Robotic arm length	Robotic arms 1 & 2	800mm
	Robotic arm 1	400mm
	Robotic arm 2	400mm
Max. operating speed	Joints 1 & 2	8830mm/s
	Joint 3	1600mm/s
	Joint 4	1600°/s
Repeat positioning accuracy	Joints 1 & 2	±0.025mm
	Joint 3	±0.01mm
	Joint 4	±0.01°
Joint 4 allowable inertial torque	Rated	0.02kg·m <sup>2</sup>
	Max.	0.3kg·m <sup>2</sup>
Working range	Joint 1	±132°
	Joint 2	±150°
	Joint 3	208mm/420mm
	Joint 4	±360°
25/305/25	0.1kg	0.4s
	1kg	0.42s
	3kg	0.46s
Power supply voltage	Single-phase AC 220 V-240 V, 50/60 Hz	
Rated power	2.4KW	
Ambient temperature	0-45°C	
Relative humidity	5-95%	
Installation aperture	160x210mm; 4-φ12	
Electrical interface	15-channel custom I/O	
Airway	φ6*2+φ4*2	
Weight	40 kg (excluding cables)	
I/O interface	System I/O: 8 channels input, 8 channels output User I/O: 24 channels input, 12 channels output External encoder: 4 channels	
Ethernet	2	
USB	2	
RS232\RS485	1	
Communication protocol	Modbus-RTU/TCP、Socket	

\*: For specific requirements regarding line selection, interface configuration, and other optional needs, please consult the technicians of RobotPhoenix.

Working range (unit: mm)



Installation size (unit: mm)



\*: Any changes resulting from upgrading our products will not be notified separately.

Python-series SCARA Robot

Python550F-T6

With superior speed, accuracy, linearity, and verticality performance, it can quickly and precisely complete tasks such as gluing, assembly, transfer, and packaging.

**Applicable industries**  
Transportation and loading/unloading, dispensing, gluing, assembly and inspection processes in electronics, food, medicine, daily chemicals, and semiconductors.

Product features	
Rated load	3kg
Max. load	6kg
Number of axes	4
Installation type	Hoisting



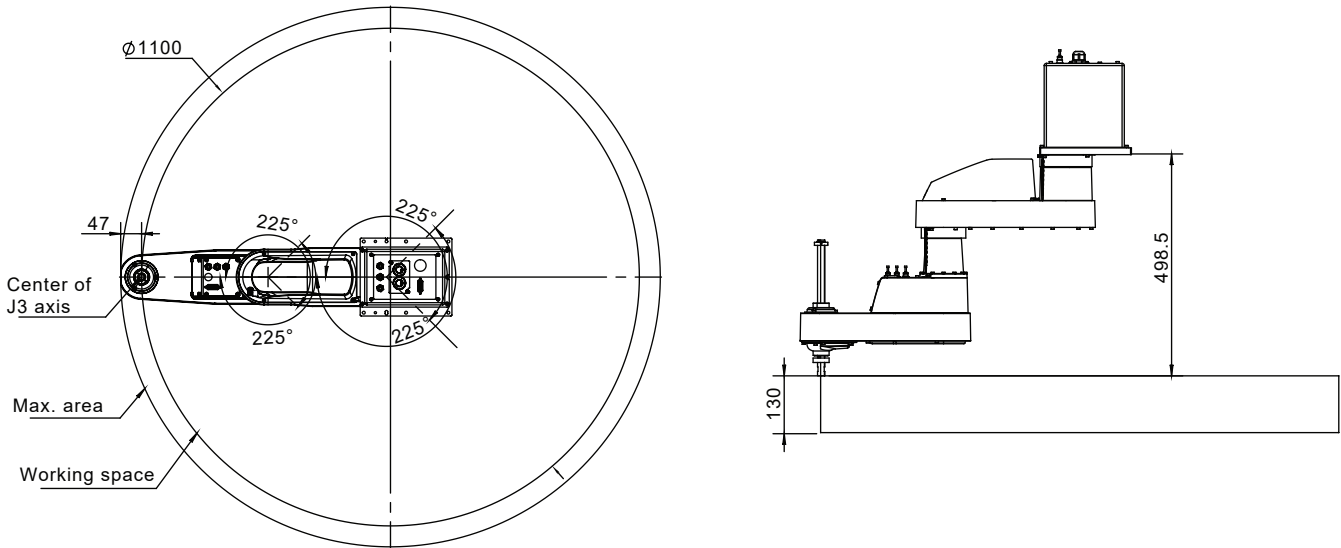
Specification

Python550F-T6

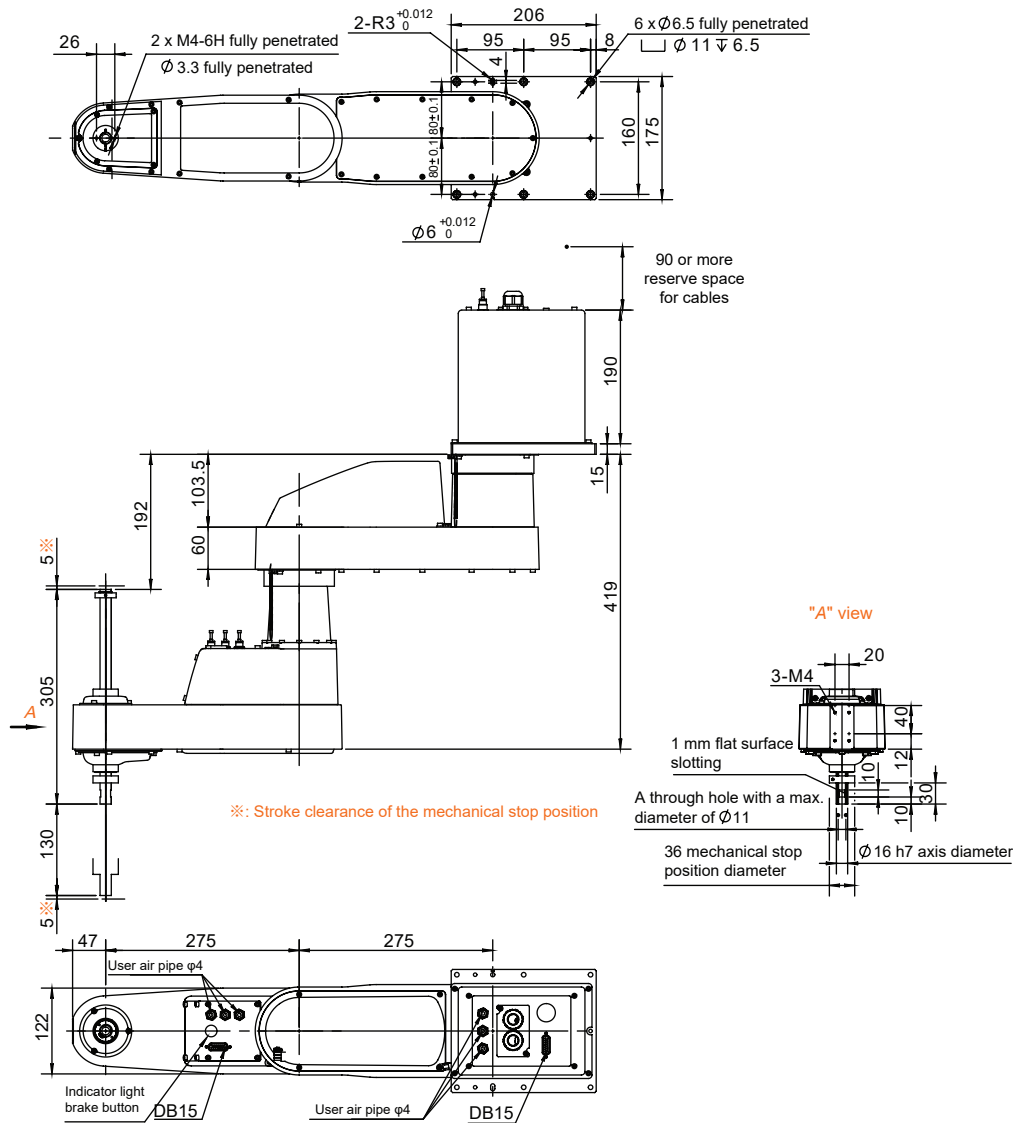
Robotic arm length	Robotic arms 1 & 2	550mm
	Robotic arm 1	275mm
	Robotic arm 2	275mm
Max. operating speed	Joints 1 & 2	7400mm/s
	Joint 3	1100mm/s
	Joint 4	2600°/s
Repeat positioning accuracy	Joints 1 & 2	±0.02mm
	Joint 3	±0.01mm
	Joint 4	±0.01°
Joint 4 allowable inertial torque	Rated	0.005kg·m <sup>2</sup>
	Max.	0.05kg·m <sup>2</sup>
Working range	Joint 1	±225°
	Joint 2	±225°
	Joint 3	130mm
	Joint 4	±720°
25/305/25	0.1kg	0.35s
	1kg	0.45s
	3kg	0.45s
Power supply voltage	Single-phase AC 220 V-240 V, 50/60 Hz	
Rated power	1.3kW	
Ambient temperature	0-45°C	
Relative humidity	5-95%	
Degree of protection	IP54	
Installation aperture	190x160mm; 6-φ6.5	
Electrical interface	10-channel custom I/O	
Airway	φ4*3	
Weight	20 kg (excluding cables and racks)	
I/O interface	System I/O: 8 channels input, 8 channels output User I/O: 24 channels input, 12 channels output External encoder: 4 channels	
Ethernet	1	
USB	2	
RS232\RS485	1	
Communication protocol	Modbus-RTU/TCP、Socket	

\*: For specific requirements regarding line selection, interface configuration, and other optional needs, please consult the technicians of RobotPhoenix.

Working range (unit: mm)



Installation size (unit: mm)



\*: Any changes resulting from upgrading our products will not be notified separately.



# List of robot selection

## Bat-series Delta Robot

Specification		Bat360-S1	Bat800-S3	Bat1100-S3	Bat1300-S6	Bat1600-S6
Configuration		Standard 4-axis				
Rated load		1kg	3kg	3kg	6kg	6kg
Max. load		/	12kg	12kg	14kg	14kg
Working space diameter		360mm	800mm	1100mm	1300mm	1600mm
Number of axes		4	4	4	4	4
Repeat positioning accuracy		±0.05mm	±0.05mm	±0.05mm	±0.05mm	±0.05mm
4-axis angular repeat positioning accuracy		±0.1°	±0.1°	±0.1°	±0.1°	±0.1°
25/305/25	0.1kg	0.25s	0.25s	0.23s	0.25s	0.25s
	1kg	0.35s	0.27s	0.25s	0.26s	0.27s
	3kg	/	0.33s	0.30s	0.28s	0.30s
	6kg	/	/	/	0.32s	0.33s
90/400/90	0.1kg	/	0.34s	0.31s	0.36s	0.33s
	1kg	/	0.37s	0.34s	0.36s	0.35s
	3kg	/	0.4s	0.39s	0.38s	0.39s
	6kg	/	/	/	0.41s	0.41s
	15kg	/	/	/	/	/
Power supply voltage		Single-phase AC 220 V±10%, 50/60 Hz	Three-phase AC 380 V±10%, 50/60 Hz			
Rated power		0.85kW	3.4kW	3.4kW	6kW	6kW
Ambient temperature		0-45°C				
Relative humidity		5-95%				
Degree of protection		IP54				
Safety		Equipped with monitoring, emergency stop, and safety functions				
Radiation		EMC shielding				
Installation method		Hoisting				
Weight of the robot body		25kg	70kg	60kg	100kg	155kg
I/O interface		12-channel universal digital I/O; 2-channel encoder input	4-channel configurable digital I/O; 8-channel universal digital I/O (8 additional I/O channels can be added) 2-channel encoder input			
Ethernet		2				
USB		1	2			
RS232/RS485		1				
Ethercat		1				
Communication protocol		Modbus-RTU/TCP、Socket				

\*: For specific requirements regarding line selection, interface configuration, and other optional needs, please consult the technicians of RobotPhoenix.

## Bat-series Delta Robot

Specification		Bat600C-S3	Bat800C-S3	Bat1100C-S3	Bat1300C-S6	Bat1600C-S6
Configuration		Standard 3-axis				
Rated load		3kg	3kg	3kg	6kg	6kg
Max. load		12kg	12kg	12kg	14kg	14kg
Working space diameter		600mm	800mm	1100mm	1300mm	1600mm
Number of axes		3	3	3	3	3
Repeat positioning accuracy		±0.05mm	±0.05mm	±0.05mm	±0.05mm	±0.05mm
4-axis angular repeat positioning accuracy		/	/	/	/	/
25/305/25	0.1kg	0.26s	0.25s	0.23s	0.24s	0.25s
	1kg	0.27s	0.26s	0.24s	0.25s	0.31s
	3kg	0.33s	0.32s	0.30s	0.27s	0.32s
	6kg	/	/	/	0.31s	0.37s
90/400/90	0.1kg	0.33s	0.33s	0.30s	0.35s	0.37s
	1kg	0.34s	0.34s	0.32s	0.36s	0.37s
	3kg	0.38s	0.38s	0.38s	0.39s	0.42s
	6kg	/	/	/	0.43s	0.46s
	15kg	/	/	/	/	/
Power supply voltage		Three-phase AC 380 V±10%, 50/60 Hz				
Rated power		3.2kW	3.2kW	3.2kW	5.6kW	5.6kW
Ambient temperature		0-45°C				
Relative humidity		5-95%				
Degree of protection		IP54				
Safety		Equipped with monitoring, emergency stop, and safety functions				
Radiation		EMC shielding				
Installation method		Hoisting				
Weight of the robot body		67kg	68kg	58kg	95kg	150kg
I/O interface		4-channel configurable digital I/O; 8-channel universal digital I/O (8 additional I/O channels can be added) 2-channel encoder input				
Ethernet		2				
USB		2				
RS232/RS485		1				
Ethercat		1				
Communication protocol		Modbus-RTU/TCP、Socket				

\*: For specific requirements regarding line selection, interface configuration, and other optional needs, please consult the technicians of RobotPhoenix.

# List of robot selection

## Bat-series Delta Robot

Specification		Bat250M-S0.5	Bat360M-S0.5	Bat600M-S3	Bat800M-S3	Bat1100M-S3
Configuration		4th axis under-mounted				
Rated load		0.5kg	0.5kg	3kg	3kg	3kg
Max. load		/	/	10kg	10kg	10kg
Working space diameter		250mm	360mm	600mm	800mm	1100mm
Number of axes		4	4	4	4	4
Repeat positioning accuracy		±0.05mm	±0.05mm	±0.05mm	±0.05mm	±0.05mm
4-axis angular repeat positioning accuracy		±0.1°	±0.1°	±0.05°	±0.05°	±0.05°
25/305/25	0.1kg	0.20s	0.19s	0.27s	0.26s	0.26s
	0.5kg	0.40s	0.19s	/	/	/
	1kg	/	/	0.29s	0.29s	0.29s
	3kg	/	/	0.35s	0.34s	0.34s
	6kg	/	/	/	0.41s	/
90/400/90	0.1kg	/	/	0.35s	0.35s	0.35s
	1kg	/	/	0.37s	0.37s	0.37s
	3kg	/	/	0.42s	0.42s	0.42s
	6kg	/	/	/	0.49s	/
	15kg	/	/	/	/	/
Power supply voltage		Single-phase AC 220 V±10%, 50/60 Hz		Three-phase AC 380 V±10%, 50/60 Hz		
Rated power		0.5kW	0.8kW	3.3kW	3.3kW	3.3kW
Ambient temperature		0-45°C				
Relative humidity		5-95%				
Degree of protection		IP54				
Safety		Equipped with monitoring, emergency stop, and safety functions				
Radiation		EMC shielding				
Installation method		Hoisting				
Weight of the robot body		10kg	24kg	69kg	70kg	60kg
I/O interface		12-channel universal digital I/O 2-channel encoder input		4-channel configurable digital I/O; 8-channel universal digital I/O (8 additional I/O channels can be added) 2-channel encoder input		
Ethernet		2				
USB		1		2		
RS232/RS485		1				
Ethercat		1				
Communication protocol		Modbus-RTU/TCP、Socket				

\*: For specific requirements regarding line selection, interface configuration, and other optional needs, please consult the technicians of RobotPhoenix.

## Bat-series Delta Robot

Specification		Bat1300M-S15	Bat2000M-S15	Bat1100B-S6	Bat1300N-S20
Configuration		4th axis under-mounted		Standard 2-axis	2+1 axis
Rated load		15kg	15kg	6kg	20kg
Max. load		/	/	/	/
Working space diameter		1300mm	2000mm	1100mm	1300mm
Number of axes		4	4	2	3
Repeat positioning accuracy		±0.1mm	±0.1mm	±0.08mm	±0.05mm
4-axis angular repeat positioning accuracy		±0.05°	±0.05°	/	±0.05°
25/305/25	0.1kg	/	0.39s	0.40s	0.40s
	1kg	/	/	0.42s	/
	3kg	0.38s	/	0.46s	/
	6kg	0.42s	0.47s	0.50s	0.48s
90/400/90	0.1kg	/	0.56s	0.53s	0.51s
	1kg	/	/	0.55s	/
	3kg	0.45s	/	0.58s	/
	6kg	0.5s	0.6s	0.64s	0.59s
	15kg	0.61s	0.7s	/	0.7s
Power supply voltage		Three-phase AC 380 V±10%, 50/60 Hz			
Rated power		6.6kW	6.1kW	2.2kW	4.6kW
Ambient temperature		0-45°C			
Relative humidity		5-95%			
Degree of protection		IP54			
Safety		Equipped with monitoring, emergency stop, and safety functions			
Radiation		EMC shielding			
Installation method		Hoisting			
Weight of the robot body		/	220kg	87kg	120kg
I/O interface		4-channel configurable digital I/O; 8-channel universal digital I/O (8 additional I/O channels can be added) 2-channel encoder input			
Ethernet		2			
USB		2			
RS232/RS485		1			
Ethercat		1			
Communication protocol		Modbus-RTU/TCP、Socket			

\*: For specific requirements regarding line selection, interface configuration, and other optional needs, please consult the technicians of RobotPhoenix.



# List of robot selection

## Python-series SCARA Robot

Specification		Python450-B6	Python550-B6	Python650-B6	Python800-B20	Python550F-B6
Robotic arm length	Robotic arms 1 & 2	450mm	550mm	650mm	800mm	550mm
	Robotic arm 1	200mm	300mm	400mm	400mm	275mm
	Robotic arm 2	250mm	250mm	250mm	400mm	275mm
Max. operating speed	Joints 1 & 2	6600mm/s	7400mm/s	8200mm/s	8830mm/s	7400mm/s
	Joint 3	1100mm/s	1100mm/s	1100mm/s	1600mm/s	1100mm/s
	Joint 4	2360°/s	2360°/s	2360°/s	1600°/s	1600°/s
Repeat positioning accuracy	Joints 1 & 2	±0.02mm	±0.02mm	±0.02mm	±0.025mm	±0.02mm
	Joint 3	±0.01mm	±0.01mm	±0.01mm	±0.01mm	±0.01mm
	Joint 4	±0.01°	±0.01°	±0.01°	±0.01°	±0.01°
Number of axes		4	4	4	4	4
Load	Rated	3kg	3kg	3kg	10kg	3kg
	Max.	6kg	6kg	6kg	20kg	6kg
Joint 4 allowable inertial torque	Rated	0.01kg·m <sup>2</sup>	0.01kg·m <sup>2</sup>	0.01kg·m <sup>2</sup>	0.02kg·m <sup>2</sup>	0.005kg·m <sup>2</sup>
	Max.	0.12kg·m <sup>2</sup>	0.12kg·m <sup>2</sup>	0.12kg·m <sup>2</sup>	0.3kg·m <sup>2</sup>	0.05kg·m <sup>2</sup>
Working range	Joint 1	±132°	±132°	±132°	±132°	±225°
	Joint 2	±150°	±150°	±150°	±150°	±225°
	Joint 3	240mm	240mm	240mm	420mm	100mm
	Joint 4	±360°	±360°	±360°	±360°	±720°
25/305/25	0.1kg	0.38s	0.39s	0.37s	0.41s	/
	1kg	0.38s	0.39s	0.37s	0.43s	0.5s
	3kg	0.39s	0.42s	0.41s	0.46s	0.52s
25/300/25	2kg	/	/	/	/	/
Electricity	Power supply voltage	Single-phase AC 220 V-240 V, 50/60 Hz				
	Rated power	1.3kW			2.4kW	1.3kW
Environmental conditions	Ambient temperature	0-45°C				
	Humidity	5-95%				
	Degree of protection	IP54				
Measurement	Installation hole location	172×140mm;4-φ12			160×210mm; 4-φ11	160×190mm; 4-φ6.5
User line	Electrical interface	15-channel custom I/O				10-channel custom I/O
	Airway	φ6*2+φ4*2				φ4*3
Installation type		Floor-mounted				Hoisting
Weight		24 kg (excluding cables)	25 kg (excluding cables)	26 kg (excluding cables)	40 kg (excluding cables)	20 kg (excluding cables)
I/O interface		4-channel configurable digital I/O 8-channel universal digital I/O (8 additional I/O channels can be added); 2-channel encoder input				
Ethernet		2				
USB		2				
EtherCAT		1				
RS232/RS485		1				
Communication protocol		Modbus-RTU/TCP、Socket				

\*: For specific requirements regarding line selection, interface configuration, and other optional needs, please consult the technicians of RobotPhoenix.

## Python-series SCARA Robot

Specification		Python450-T6	Python550-T6	Python650-T6	Python800-T20	Python550F-T6
Robotic arm length	Robotic arms 1 & 2	450mm	550mm	650mm	800mm	550mm
	Robotic arm 1	200mm	300mm	400mm	400mm	275mm
	Robotic arm 2	250mm	250mm	250mm	400mm	275mm
Max. operating speed	Joints 1 & 2	6600mm/s	7400mm/s	8200mm/s	8830mm/s	7400mm/s
	Joint 3	1100mm/s	1100mm/s	1100mm/s	1600mm/s	1100mm/s
	Joint 4	2360°/s	2360°/s	2360°/s	1600°/s	2600°/s
Repeat positioning accuracy	Joints 1 & 2	±0.02mm	±0.02mm	±0.02mm	±0.025mm	±0.02mm
	Joint 3	±0.01mm	±0.01mm	±0.01mm	±0.01mm	±0.01mm
	Joint 4	±0.01°	±0.01°	±0.01°	±0.01°	±0.01°
Number of axes		4	4	4	4	4
Load	Rated	3kg	3kg	3kg	10kg	3kg
	Max.	6kg	6kg	6kg	20kg	6kg
Joint 4 allowable inertial torque	Rated	0.01kg·m <sup>2</sup>	0.01kg·m <sup>2</sup>	0.01kg·m <sup>2</sup>	0.02kg·m <sup>2</sup>	0.005kg·m <sup>2</sup>
	Max.	0.12kg·m <sup>2</sup>	0.12kg·m <sup>2</sup>	0.12kg·m <sup>2</sup>	0.3kg·m <sup>2</sup>	0.05kg·m <sup>2</sup>
Working range	Joint 1	±132°	±132°	±132°	±132°	±225°
	Joint 2	±150°	±150°	±150°	±150°	±225°
	Joint 3	240mm	240mm	240mm	420mm	100mm
	Joint 4	±360°	±360°	±360°	±360°	±720°
25/305/25	0.1kg	/	/	0.37s	0.4s	0.35s
	1kg	/	/	0.37s	0.42s	0.45s
	3kg	/	/	0.41s	0.46s	0.45s
25/300/25	2kg	0.38s	0.39s	/	/	/
Electricity	Power supply voltage	Single-phase AC 220 V-240 V, 50/60 Hz				
	Rated power	1.3kW			2.4kW	1.3kW
Environmental conditions	Ambient temperature	0-45°C				
	Relative humidity	5-95%				
	Degree of protection	IP54				
Measurement	Installation hole location	172×140mm;4-φ12			160×210mm; 4-φ11	160×190mm; 4-φ6.5
User line	Electrical interface	15-channel custom I/O				10-channel custom I/O
	Airway	φ6*2+φ4*2				φ4*3
Installation type		Floor-mounted				Hoisting
Weight		24 kg (excluding cables)	25 kg (excluding cables)	26 kg (excluding cables)	40 kg (excluding cables)	20 kg (excluding cables)
I/O interface		System I/O: 8 channels input, 8 channels output; User I/O: 24 channels input, 12 channels output; External encoder: 4 channels				
Ethernet		2				
USB		2				
RS232/RS485		1				
Communication protocol		Modbus-RTU/TCP、Socket				

\*: For specific requirements regarding line selection, interface configuration, and other optional needs, please consult the technicians of RobotPhoenix.